

**CHICAGO FAUCETS**  
a Geberit company

2100 South Clearwater Drive  
Des Plaines, IL 60018  
Phone: 847-803-5000  
Fax: 847-803-5454  
www.chicagofaucets.com

**REPAIR PARTS**

BY: JAR DATE: 05-23-02  
CHK: [Signature] REV: 08-01-08

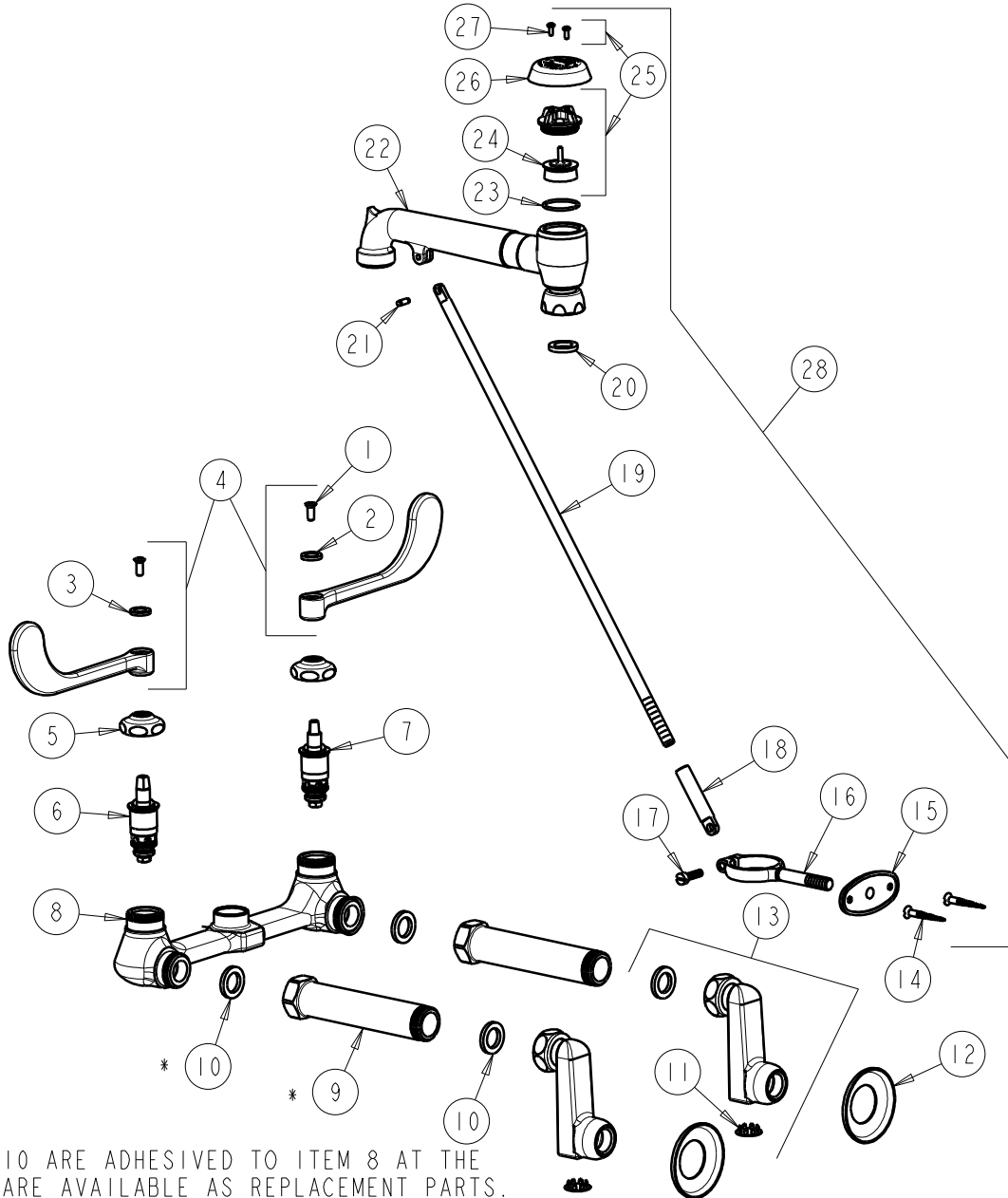
FITTING NO.

**815-VBCP**

SUBMITTED MODEL NO.

ITEM NO.

**FOR TECHNICAL ASSISTANCE**  
1-800-TEC-TRUE (1-800-832-8783)



\* NOTE:  
ITEMS 9 AND 10 ARE ADHESIVED TO ITEM 8 AT THE  
FACTORY BUT ARE AVAILABLE AS REPLACEMENT PARTS.

| ITEM | PART NO.     | DESCRIPTION                       | ITEM | PART NO.    | DESCRIPTION                   |
|------|--------------|-----------------------------------|------|-------------|-------------------------------|
| 1    | 420-010JKRCF | SCREW, 10-32 UNC PH 1/2           | 15   | 173-109JKCP | FLANGE                        |
| 2    | 633-023JKNF  | INDEX BUTTON (RED)                | 16   | 173-010JKCP | PIPE SUPPORT                  |
| 3    | 633-123JKNF  | INDEX BUTTON (BLUE)               | 17   | 173-012JKCP | SCREW                         |
| 4    | 319-PRJKCP   | WRISTBLADE HANDLE (PAIR)          | 18   | 173-026JKCP | SLEEVE, SPOUT                 |
| 5    | 1-214JKCP    | CAP                               | 19   | 815-001JKCP | BRACE ROD 15-7/8"             |
| 6    | 1-099XTJKNF  | QUATURN UNIT (RH)                 | 20   | 340-004JKNF | CELCON WASHER                 |
| 7    | 1-100XTJKNF  | QUATURN UNIT (LH)                 | 21   | 50-007JKBNF | PIN                           |
| 8    | —            | VALVE BODY (NOT SOLD SEPARATELY)  | 22   | —           | SPOUT ASSEMBLY                |
| 9    | EX5JKCP      | EXTENSION                         | 23   | 80-007JKNF  | O-RING                        |
| 10   | 1-011JKNF    | WASHER, .97 X .62 X .12           | 24   | 892-032JKNF | VACUUM BREAKER DISC ASSEMBLY  |
| 11   | 1-144JKCP    | BUTTON                            | 25   | 892-202JKNF | VACUUM BREAKER REPAIR KIT     |
| 12   | 1-055JKCP    | FLANGE                            | 26   | 892-154JKCP | VACUUM BREAKER COVER          |
| 13   | RJKCP        | SUPPLY ARM WITH BUILT-IN SHUT-OFF | 27   | 333-321JKNF | VACUUM BREAKER TORX SCREW     |
| 14   | 173-006JKCP  | FLAT HEAD WOOD SCREW (1)          | 28   | 815-SVBJKCP | VACUUM BRAEKER SPOUT ASSEMBLY |