

CHICAGO FAUCETS
a GEBERIT company

2100 South Clearwater Drive
Des Plaines, IL 60018
Phone: 847-803-5000
Fax: 847-803-5454
www.chicagofaucets.com

REPAIR PARTS

FITTING NO.

897-CP

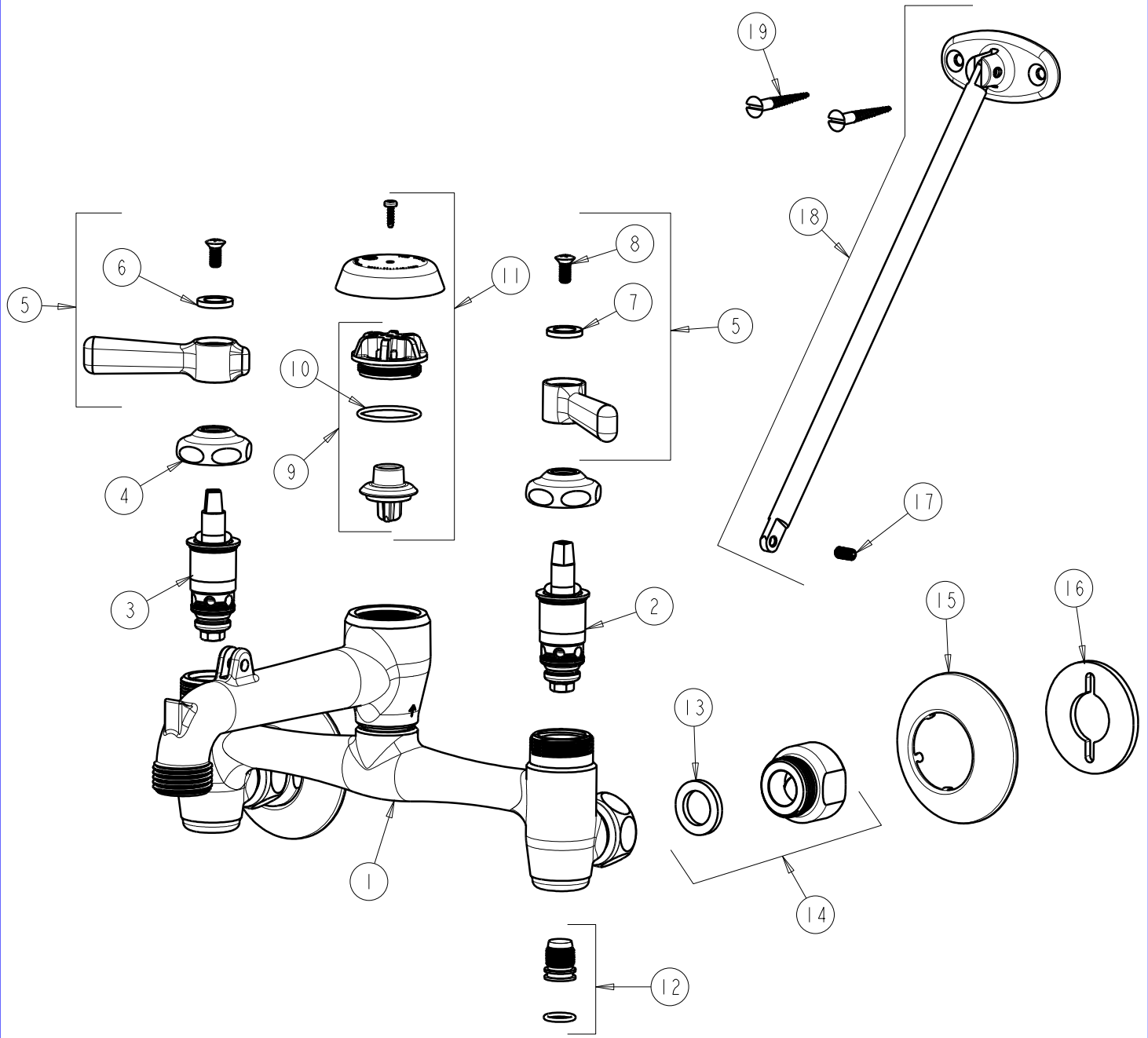
SUBMITTED MODEL NO.

ITEM NO.

BY: SID DATE: 10-03-00

CHK: *[Signature]* REV: 07-19-10

FOR TECHNICAL ASSISTANCE
1-800-TEC-TRUE (1-800-832-8783)



ITEM	PART NO.	DESCRIPTION	ITEM	PART NO.	DESCRIPTION
1	—	VALVE BODY (NOT SOLD SEPERATELY)	11	892-402JKKNF	VACUUM BREAKER REPAIR KIT
2	1-099XTJKNF	QUATURN UNIT (RH)	12	897-014KJKRBF	INTEGRAL STOP STEM ASSEMBLY
3	1-100XTJKNF	QUATURN UNIT (LH)	13	1-011JKNF	WASHER, .97 X .62 X .12
4	1-214JKCP	CAP	14	897-012JKRCF	ARM ASSEMBLY (INCLUDES WASHER)
5	369-PRJKCP	LEVER HANDLE ASSEMBLY (PAIR)	15	633-201JKCP	WALL FLANGE
6	633-023JKNF	INDEX BUTTON (RED)	16	807-112JKNF	WASHER
7	633-123JKNF	INDEX BUTTON (BLUE)	17	665-116JKNF	SET SCREW
8	420-010JKRCF	SCREW, 10-32 UNC PH 1/2	18	897-013JKKCP	BRACE ROD ASSEMBLY
9	892-302JKKNF	VACUUM BREAKER REPAIR KIT	19	173-006JKCP	FLAT HEAD WOOD SCREW (1)
10	80-007JKNF	O RING 0.989 X .070			