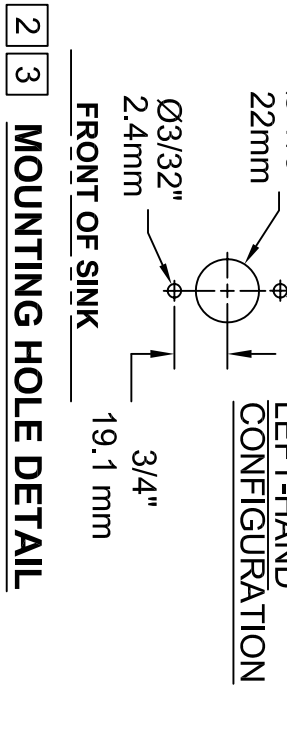


NOTES:

1. THE ANSI Z358.1-2009 STANDARD SPECIFIES EYEWASH NOZZLE HEIGHTS TO BE 83.8cm (33 IN.) TO 114.3cm (45 IN.), ABOVE THE FLOOR AND 15.3cm (6 IN.) MINIMUM FROM WALL OR NEAREST OBSTRUCTION.
2. INSTALL SO THAT EYEWASH HEAD IS OVER SINK WHEN ACTIVATED. EYEWASH REQUIRES 4-1/2" [114mm] OF CLEARANCE AROUND HEAD FOR FACEWASH STREAMS.
3. DRILL ONE Ø7/8" [22mm] HOLE AND ONE Ø3/32" HOLE WHERE UNIT IS TO BE INSTALLED. REFER TO MOUNTING HOLE DETAIL.
4. THESE DIMENSIONS MAY VARY ±1/2" [6.4mm].



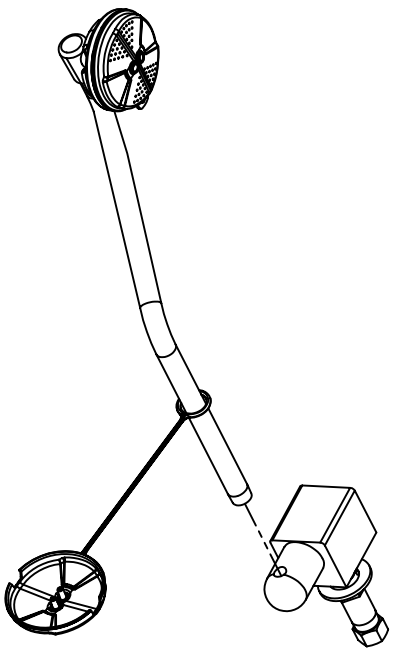
2 3 MOUNTING HOLE DETAIL



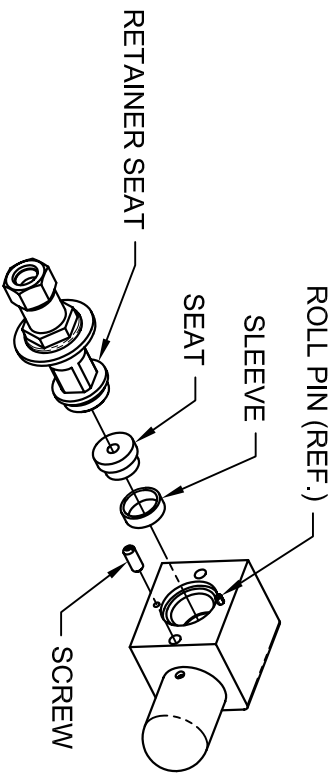
1455 KLEPPE LANE
SPARKS, NEVADA 89431
(775) 359-4712 FAX (775) 359-7424
E-MAIL: HAWS@HAWS.CO.COM
WEBSITE: WWW.HAWS.CO.COM

REVNO:	2006	DATE:	10/96	MODELS:	7610	INFO FAX DOC #:	27610	CONTRACT NO:	002000067.D
ECN:	4345	HR:		DATE:	7/610	INNO FAX DOC #:		DATE:	12/691A00
APPROVER:		DATE:		SCALE:	AS SHOWN	PREPARED BY:	INSTALLATION/PACKAGE	SIZE:	A
								SHEET:	1 OF 3

PROCEDURE FOR LEFT-HAND CONVERSION

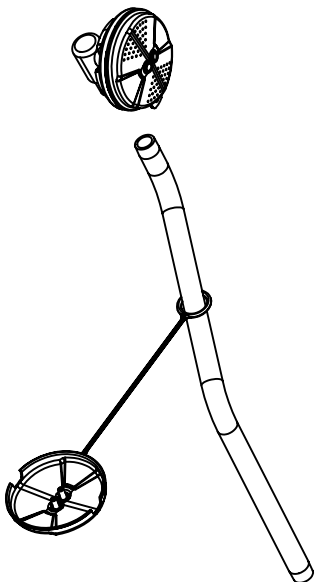


STEP 1:
 (SHOWN IN CLOSED POSITION)
 REMOVE BEND FROM BODY. HAWS RECOMMENDS THE USE OF A SOFT TOOTH VICE TO PREVENT MARKINGS ON CHROME PLATED PARTS THROUGHOUT ENTIRE PROCEDURE.

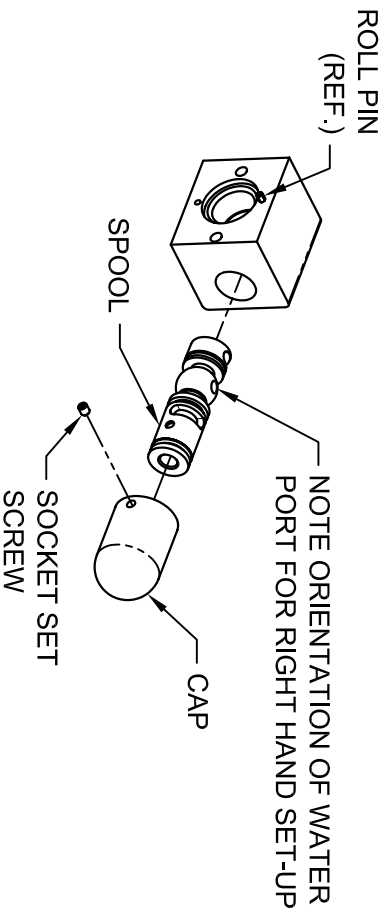


STEP 3:
 REMOVE RETAINER SEAT, SLEEVE AND SEAT FROM BODY. REMOVE SCREW.

EYEWASH ASSEMBLY



STEP 2:
 REMOVE EYEWASH ASSEMBLY FROM BEND.

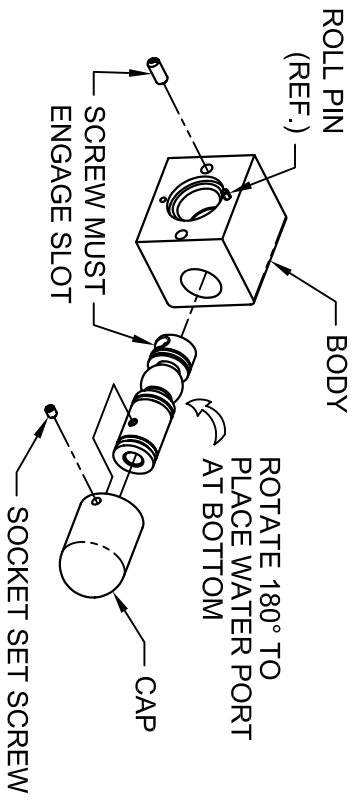


STEP 4:
 LOOSEN AND BACK OFF SOCKET SET SCREW WITH 3/32" HEX WRENCH. REMOVE CAP AND SPOOL. NOTE EXISTING ORIENTATION WATER PORT IN R.H. CLOSED POSITION.

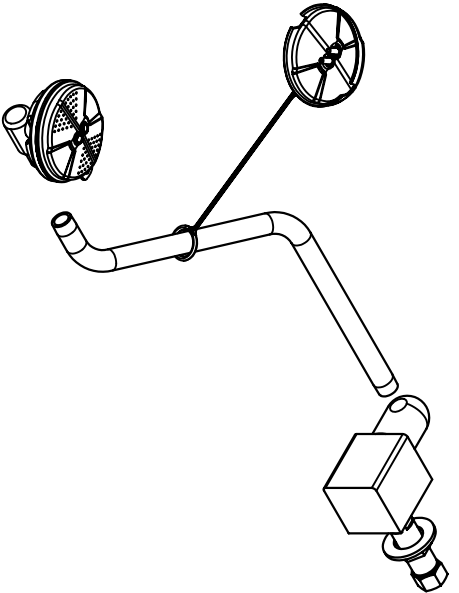


1455 KLEPPE LANE
 SPARKS, NEVADA 89431
 (775) 359-4712 FAX (775) 359-7424
 E-MAIL: HAWS@HAWS.CO.COM
 WEBSITE: WWW.HAWS.CO.COM

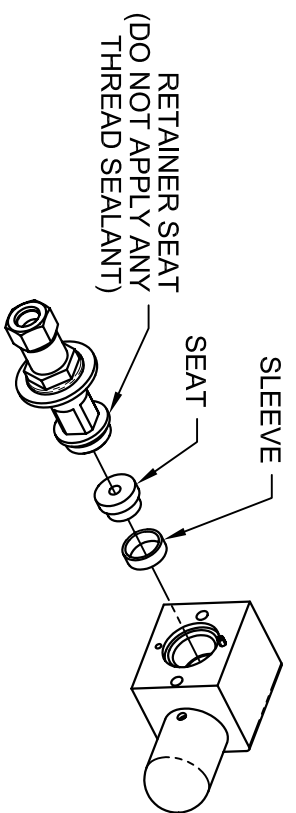
FORM NO. 3906	REVISIONS	DATE	BY	DESCRIPTION
3906	ECH-4367	HR	7/6/10	MODEL(S):
DATE	5/1/07	DATE	27/6/10	INFO FAX DOC #:
APPROVER	JF	DATE	5/1/07	27/6/10
SCALE	1:1	PREPARED BY	INSTALLATION/BACK	
SIZE	A	SHEET	2	OF 3
QUANTITY	100	ORDER NO.	20080067.D	
DATE	12/6/10	REV	1/0	



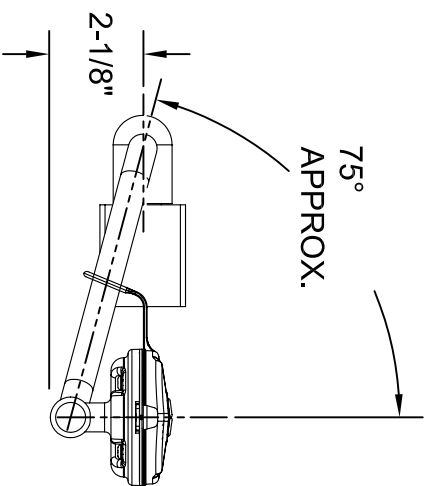
STEP 5:
 ROTATE SPOOL 180°, INSERT INTO BODY. INSERT SCREW AT LEFT SIDE OF BODY, SCREW MUST ENGAGE SLOT ON SPOOL. ATTACH CAP, SECURE WITH SOCKET SET SCREW. (THIS IS NOW IN L.H. CLOSED POSITION).



STEP 7:
 ATTACH BEND TO BODY, THEN HEAD ASSEMBLY TO BEND, SEE STEP 8 FOR ORIENTATION OF BEND. USE LOCTITE #565 THREAD SEALANT ON MALE THREADS OF BEND (EACH END).

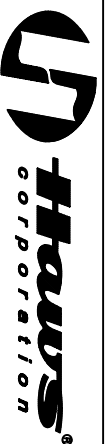


STEP 6:
 INSERT SLEEVE, SEAT AND SCREW RETAINER SEAT TIGHTLY.



STEP 8:
 NOTE PROPER ORIENTATION OF BEND; 2-1/8" FROM CENTER OF BODY TO CENTER OF EYEWASH TEE. THE 75° IS FOR REFERENCE ONLY.

UPON COMPLETION CHECK FOR PROPER DIRECTION OF ACTIVATION AND FOR LEAKS.



1455 KLEPPE LANE
 SPARKS, NEVADA 89431
 (775) 359-4712 FAX (775) 359-7424
 E-MAIL: HAWS@HAWS.CO.COM
 WEBSITE: WWW.HAWS.CO.COM

FORM NO. 2068	REVISIONS	DATE	DESCRIPTION
2068	ECH-4897	HR	7/6/10
DATE	5/1/07	APPROVED	
MODELS:	INFO FAX DOC #:	27/6/10	
PREPARED BY:	DESIGNED BY:	INSTALLATION/FAXBACK	
QUANTITY	0002080067.D		
DATE	12/6/10		
SIZE	A	SHEET	3 OF 3