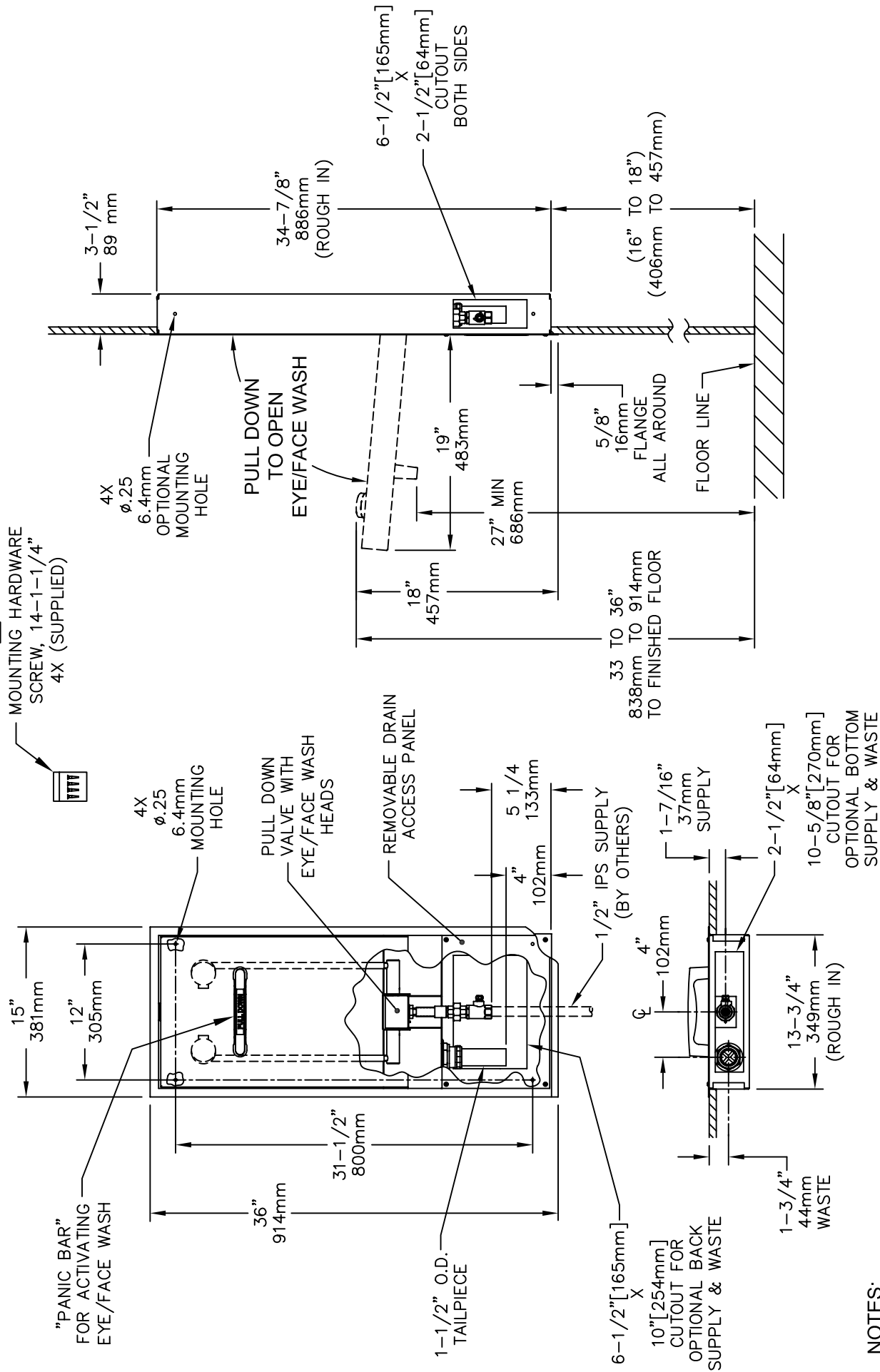


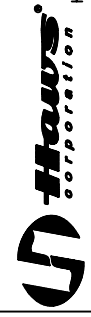
THIS DOCUMENT IS TRUE AND CORRECT AT TIME OF PUBLICATION. CONTINUED PRODUCT IMPROVEMENTS MAKE SPECIFICATIONS AND MEASUREMENTS SUBJECT TO CHANGE WITHOUT NOTICE.

3



NOTES:

1. WHEN INSTALLING THIS UNIT, LOCAL, STATE OR FEDERAL CODES SHOULD BE ADHERED TO. WASTE CONNECTION MUST ADHERE TO LOCAL HEALTH AND PLUMBING CODES.
2. FLOW RATE FOR EYE/FACE WASH IS 5 GPM AND EXCEEDS ANSI STANDARD Z358.1.
3. USE SUPPLIED SCREWS TO INSTALL THE UNIT ON WALL STRUCTURE.
4. DIMENSIONS MAY VARY BY ± 1/2" [12.7mm].



INFO FAX : 1-888-FAX-HAWS (1-888-329-4297)
 1455 Kleppe Ln, Sparks NV, 89431
 Phone: 775-359-4712 Fax: 775-359-7424
 Haws Ag, Bachweg 3, CH-3401 Burgdorf Switzerland
 Haws Mtg Pte Ltd, 74 Sungei Kadut Loop, Singapore 729531
 e-mail: haws@hawsco.com website: www.hawsco.com

FOR NO.:	REVISION:	DATE:	BY:	DATE:	BY:
ECN: 3592	HM	08/20/03	PKD:		
APPROVER:			DATE:		
SCALE: 1:12			DRAWING TYPE: INSTALLATION/FABRICATION		
MODEL(S):			DRAWING NUMBER:		
7656WC EYEWASH			1372A00		
INFO FAX DOC # 2765692			SIZE: A 1 OF 1		