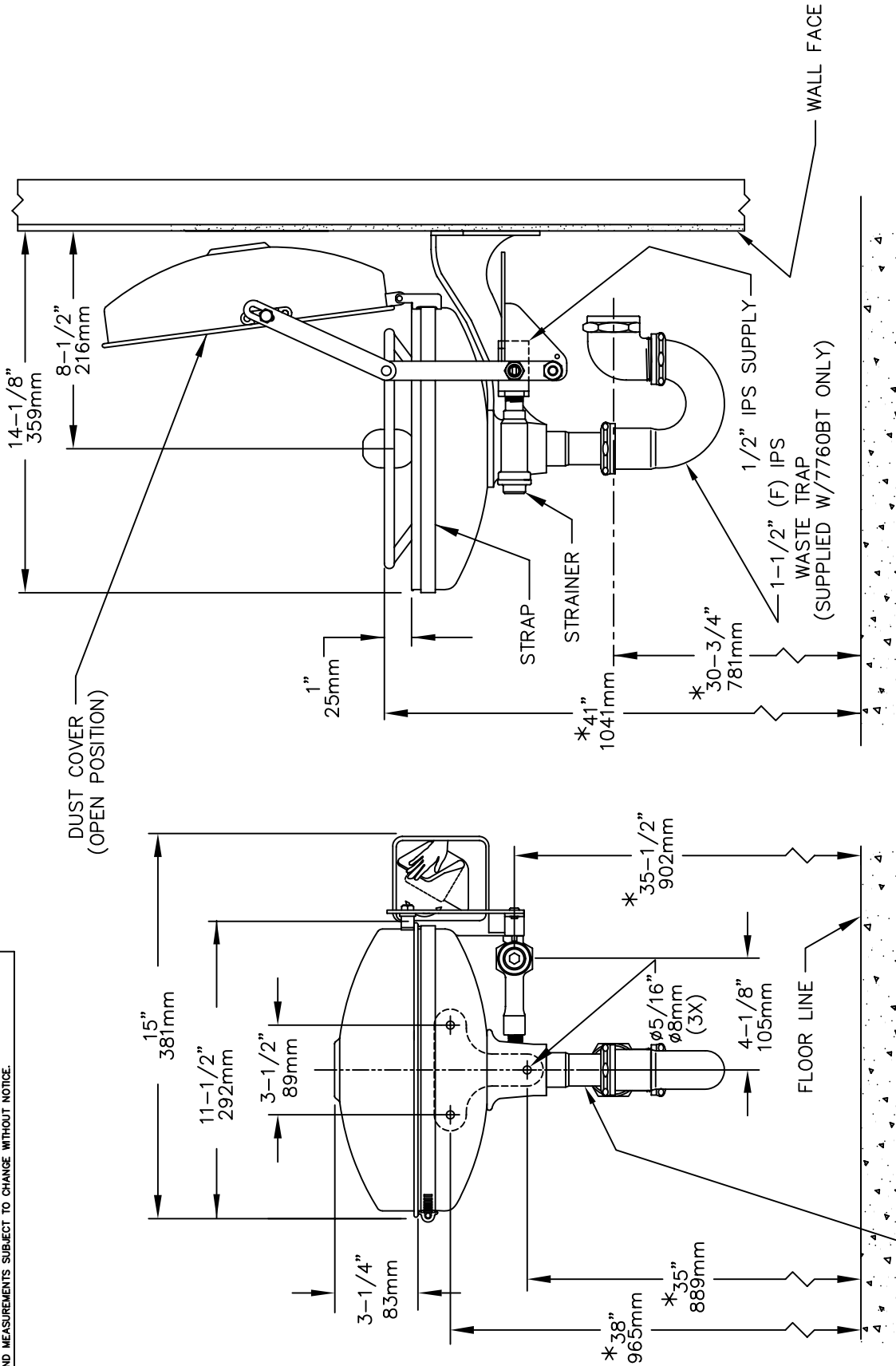



THIS DOCUMENT IS TRUE AND CORRECT AT TIME OF PUBLICATION. CONTINUED PRODUCT IMPROVEMENTS MAKE SPECIFICATIONS AND MEASUREMENTS SUBJECT TO CHANGE WITHOUT NOTICE.



NOTES:

1. ANSI STANDARD SPECIFIES EYEWASH NOZZLES TO BE 33" (838mm) TO 45" (1143mm) ABOVE THE FLOOR.
2. \*THESE DIMENSIONS MAY VARY ±1/4" [6.4mm].

— TAILPIECE 1 1/4" O.D.  
(SUPPLIED W/7760BT ONLY)


**Haws Corporation**  
 INFO FAX : 1-888-FAX-HAWS (1-888-329-4297)  
 1455 Kleppe Ln, Sparks NV, 89431  
 Phone: 775-359-4712 Fax: 775-359-7424  
 Haws Ag, Bachweg 3, CH-3401 Burgdorf, Switzerland  
 Haws Mtg Pte Ltd, 74 Sungai Kadut Loop, Singapore 729531  
 e-mail: Haws@hawsco.com website: www.hawsco.com

FORM NO.	REVISION	DATE	BY	CHKD	DATE
ECN: 3592	HM	05/91			
APPROVED:					

MODEL(S): 7760BT/7760BT EYE/FACE WASH  
 DRAWING NUMBER: 09403A00  
 SCALE: 1:1  
 SHEET: 1 OF 1  
 DRAWING TYPE: INSTALLATION/FABRICK