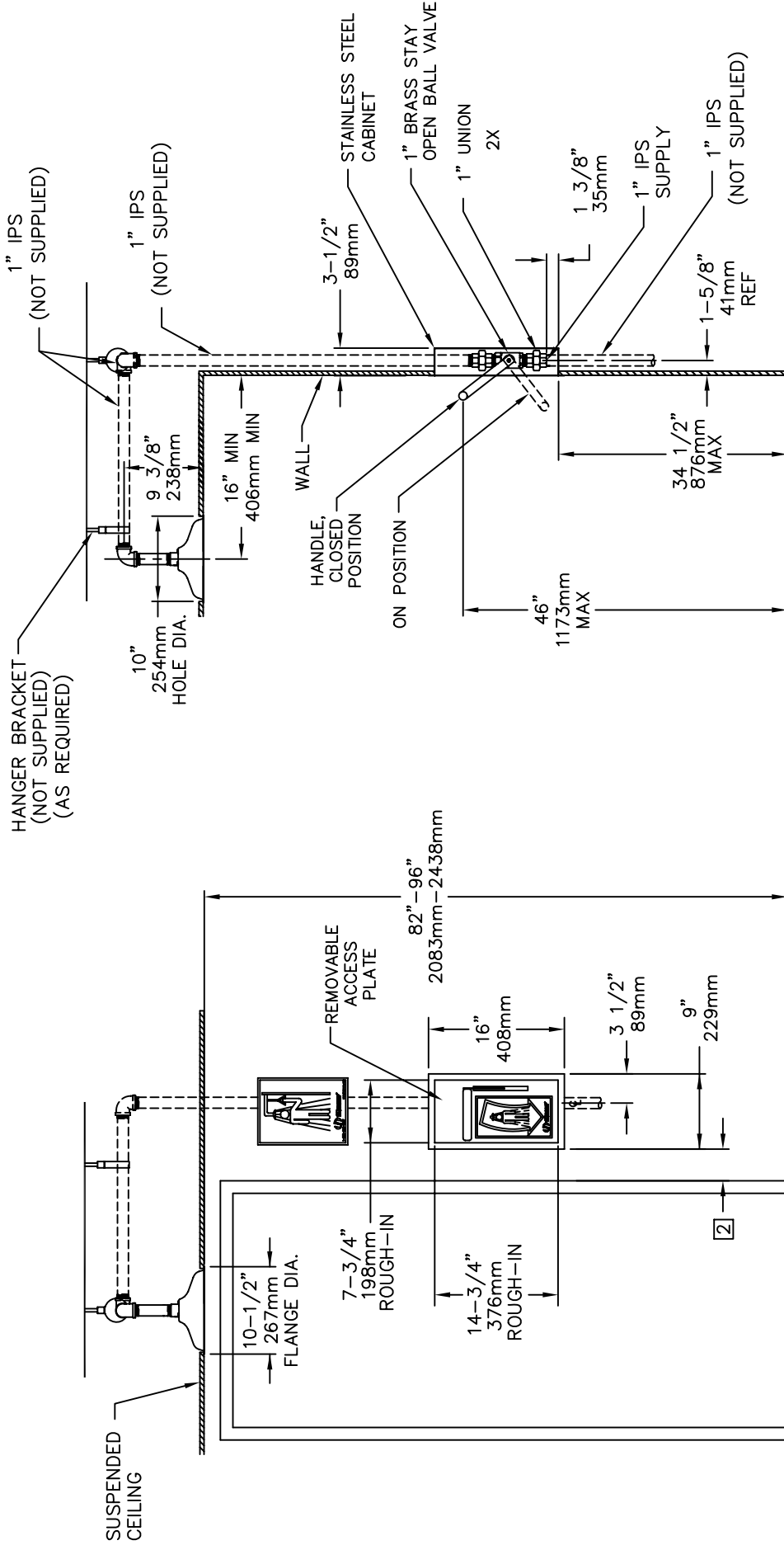


THIS DOCUMENT IS TRUE AND CORRECT AT TIME OF PUBLICATION. CONTINUED PRODUCT IMPROVEMENTS MAKE SPECIFICATIONS AND MEASUREMENTS SUBJECT TO CHANGE WITHOUT NOTICE.

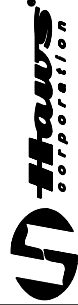
SEE SHT. 2 OF 2 FOR TOP VIEW



NOTE:

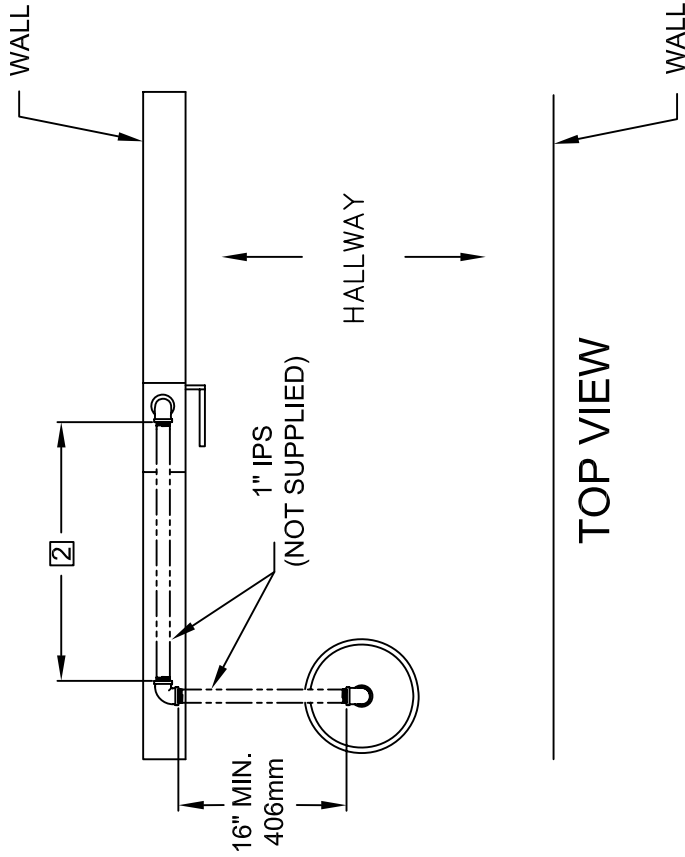
- TO COMPLY WITH ANSI Z358.1-2004 FOR EMERGENCY SHOWER EQUIPMENT:
 - UNIT SHALL BE INSTALLED IN ACCORDANCE WITH MANUFACTURER'S INSTRUCTIONS AND ACCEPTABLE PLUMBING PRACTICES.
 - SHOWER SHALL BE POSITIONED SO THAT SHOWER HEAD IS NOT LESS THAN 208.3 CM (82 IN.) NOR MORE THAN 243.8 CM (96 IN.) FROM SURFACE ON WHICH USER STANDS.
 - SHOWER SPRAY PATTERN SHALL HAVE A MINIMUM DIAMETER OF 50.8 CM (20 IN.) AT 152.4 CM (60 IN.) ABOVE SURFACE ON WHICH USER STANDS, AND CENTER OF SPRAY PATTERN SHALL BE LOCATED AT LEAST 40.6 CM (16 IN.) FROM ANY OBSTRUCTION.

2 INSTALL STAINLESS STEEL CABINET AS CLOSE TO DOOR JAM AS POSSIBLE.



INFO FAX : 1-888-FAX-HAWS (1-888-329-4297)
 1455 Kleppe Ln, Sparks NV, 89431
 Phone: 775-359-4712 Fax: 775-359-7424
 Haws Ag, Bachweg 3, CH-3401 Burgdorf Switzerland
 Haws Mfg Pte Ltd 74 Sungai Kadut Loop Singapore 729531
 e-mail: Haws@hawsco.com website: www.hawsco.com

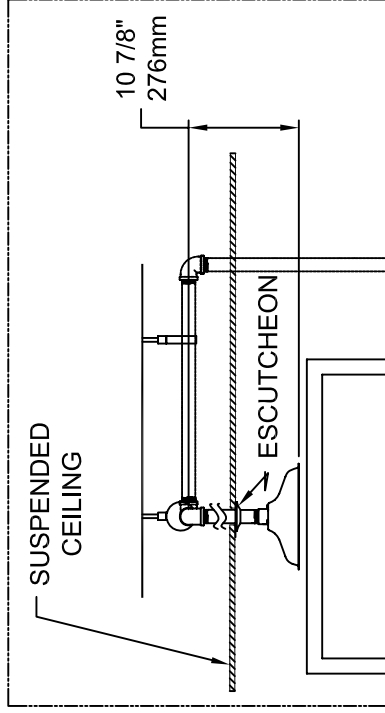
FOR NO. 1	REVISED PER	DATE	BY	CHKD	DATE	BY	CHKD
000000	ECN: 4158	03/09/00	8164	8164	03/09/00	8164	8164
DRAWN				MODEL(S):			
APPROVED				8164 SHOWER			
SCALE: 1:10				INFO. FAX DOC # 28164			
DRAWING NUMBER				INSTALLATION/FABRICATION			
13622A00				10			
SIZE: A				SHEET 1 OF 2			



TOP VIEW

NOTE:

1. TO COMPLY WITH ANSI Z358.1-2004 FOR EMERGENCY SHOWER EQUIPMENT:
 - UNIT SHALL BE INSTALLED IN ACCORDANCE WITH MANUFACTURER'S INSTRUCTIONS AND ACCEPTABLE PLUMBING PRACTICES.
 - SHOWER SHALL BE POSITIONED SO THAT SHOWER HEAD IS NOT LESS THAN 208.3 CM (82 IN.) NOR MORE THAN 243.8 CM (96 IN.) FROM SURFACE ON WHICH USER STANDS.
 - SHOWER SPRAY PATTERN SHALL HAVE A MINIMUM DIAMETER OF 50.8 CM (20 IN.) AT 152.4 CM (60 IN.) ABOVE SURFACE ON WHICH USER STANDS, AND CENTER OF SPRAY PATTERN SHALL BE LOCATED AT LEAST 40.6 CM (16 IN.) FROM ANY OBSTRUCTION.
- [2] INSTALL STAINLESS STEEL CABINET AS CLOSE TO DOOR JAM AS POSSIBLE.



FOR ALTERNATE "HANG DOWN" INSTALLATION OF SHOWER HEAD (SHOWN ABOVE) PERFORM THE FOLLOWING STEPS:

- 1) SWAP OUT 1" X 5" GALVANIZED NIPPLE FOR 1" X 6-1/2" HI POLISHED NIPPLE (SUPPLIED)
- 2) USE CEILING ESCUTCHEON FOR 1" PIPE (SUPPLIED)



INFO FAX : 1-888-FAX-HAWS (1-888-329-4297)
 1455 Kleppe Ln, Sparks NV, 89431
 Phone: 775-359-4712 Fax: 775-359-7424
 Haws Ag, Bachweg 3, CH-3401 Burgdorf Switzerland
 Haws Mfg Pte Ltd 74, Sungai Kadut Loop Singapore 729531
 e-mail: Haws@hawsco.com website: www.hawsco.com

FOR NO.	REVISION	DATE	BY	CHKD	DATE	SCALE	TYPE
8164	4158	03/09/00				1:16	INSTALLATION/FABRACK
MODEL(S):							REV
8164 SHOWER							10
INFO FAX DOC # 28164							13622A00
							SIZE: A SHI: 2 OF 2