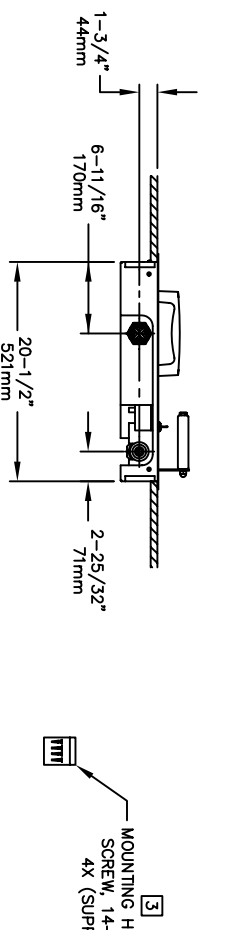
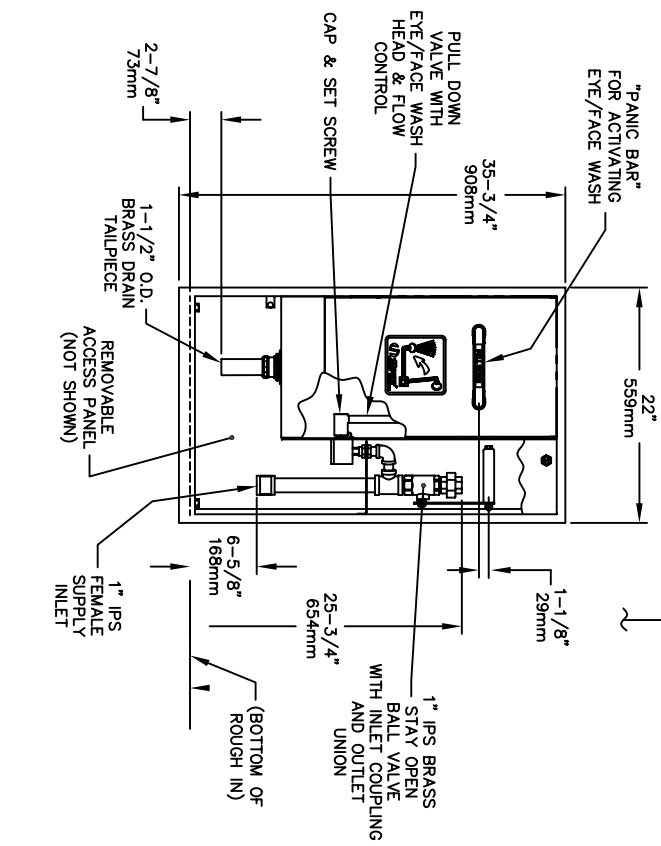
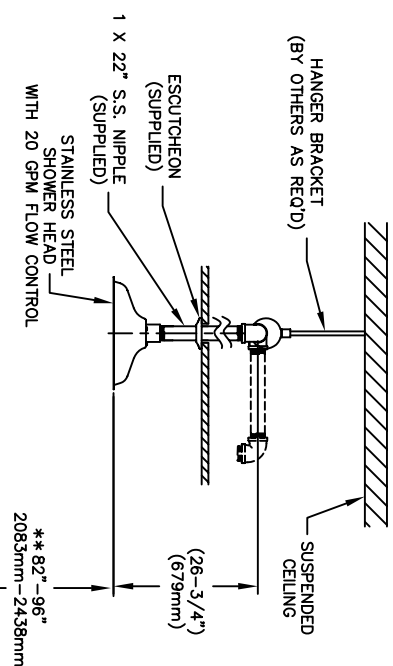
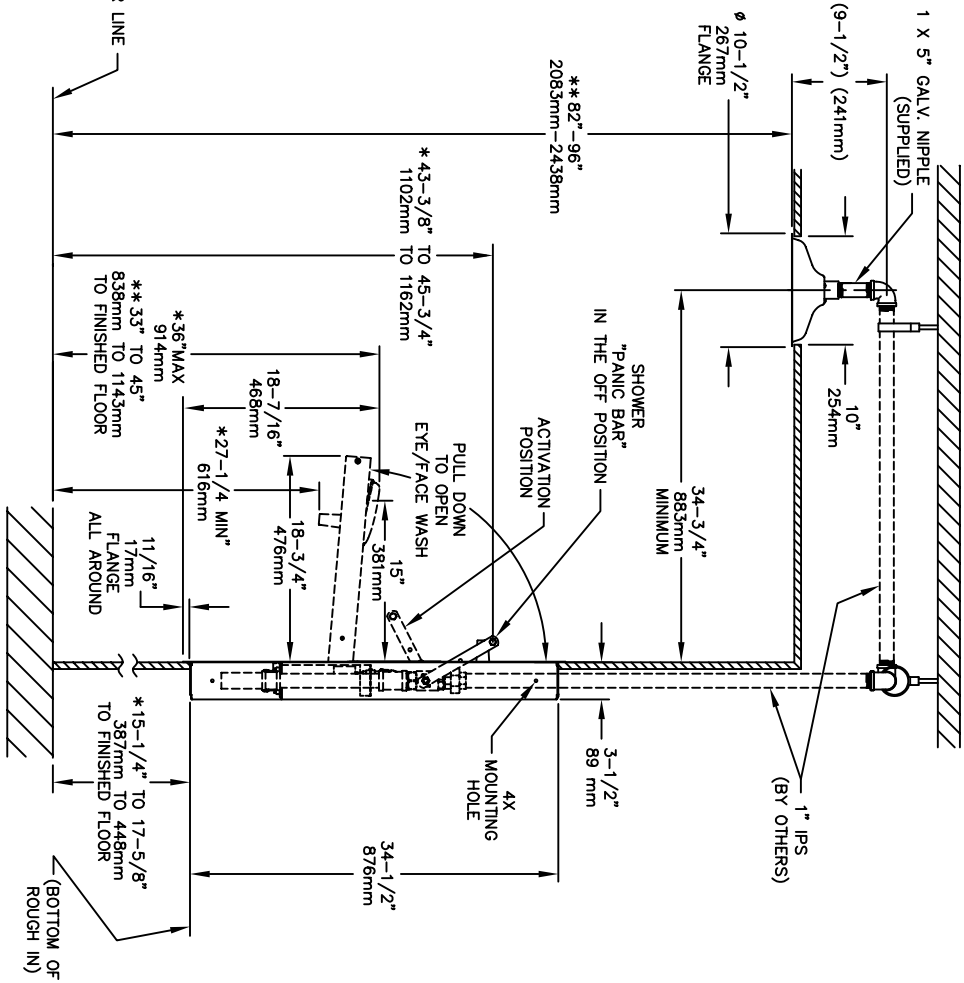


OPTIONAL SHOWER HEAD INSTALLATION



- NOTES:
1. WHEN INSTALLING THIS UNIT, LOCAL, STATE OR FEDERAL CODES SHOULD BE ADHERED TO. WASTE CONNECTION MUST ADHERE TO LOCAL HEALTH AND PLUMBING CODES.
 2. FLOW RATE FOR EYE/FACE WASH IS 7 GPM AND EXCEEDS ANSI STANDARD Z358.1.
 3. USE SUPPLIED SCREWS TO INSTALL THE UNIT ON WALL STRUCTURE.
 4. HOLD THIS DIMENSION FOR WHEELCHAIR ACCESSIBLE APPLICATIONS.
 5. DIMENSIONS MAY VARY BY $\pm 1/2"$ [12.7mm].



Haws Corporation

INFO FAX : 1-888-FAX-HAWS (1-888-329-4297)

1455 Kiappa Ln, Sparks, NV, 89431
 Phone: 775-359-4712 Fax: 775-359-7424
 Haws AG, Burgdorf, Switzerland
 Haws King Pte Ltd, 74 Sungei Kodat Loop, Singapore 729531
 e-MAIL: Haws@hawsco.com website: www.hawsco.com

MODEL(S): PULLDOWN SHOWER EYE/FACE WASH
 INFO FAX DOC # 2835692
 SCALE: 1/8" = 1"

DATE: 10/25/04
 DRAWN: ECH: 3494
 CHECKED: JCH: 3494
 APPROVED: JCH: 3494

FIG. NO. 15187A00