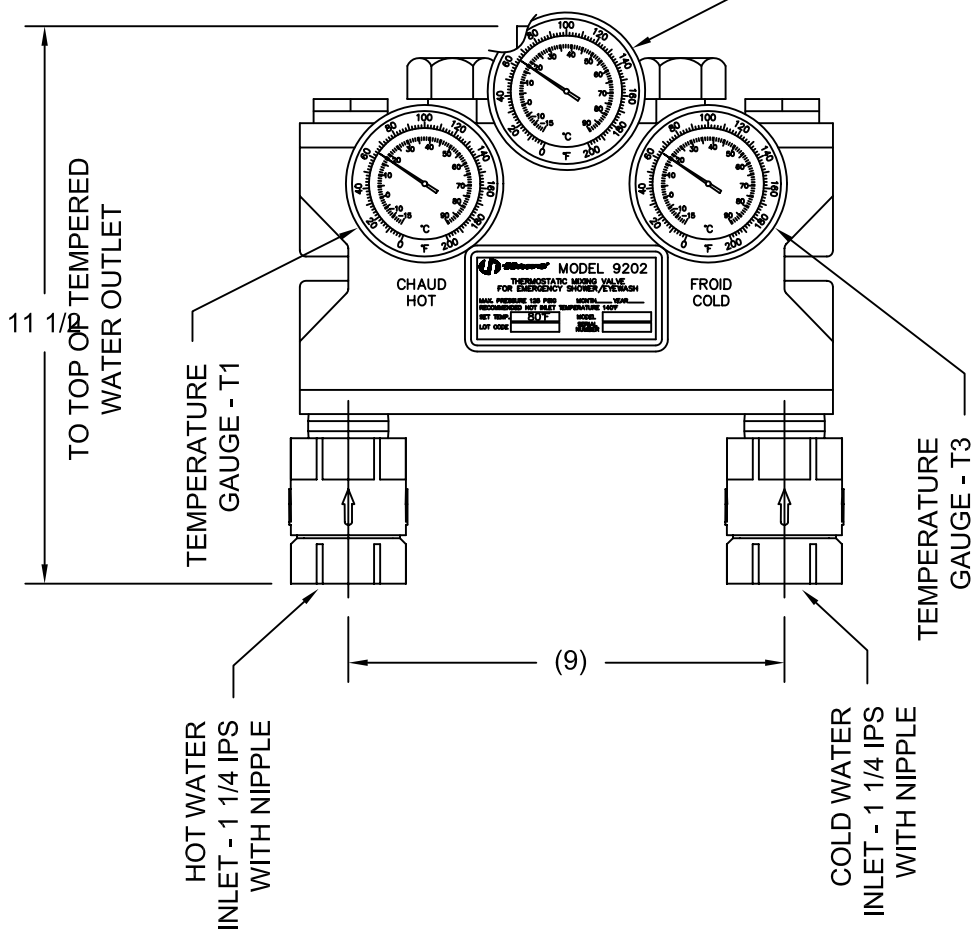
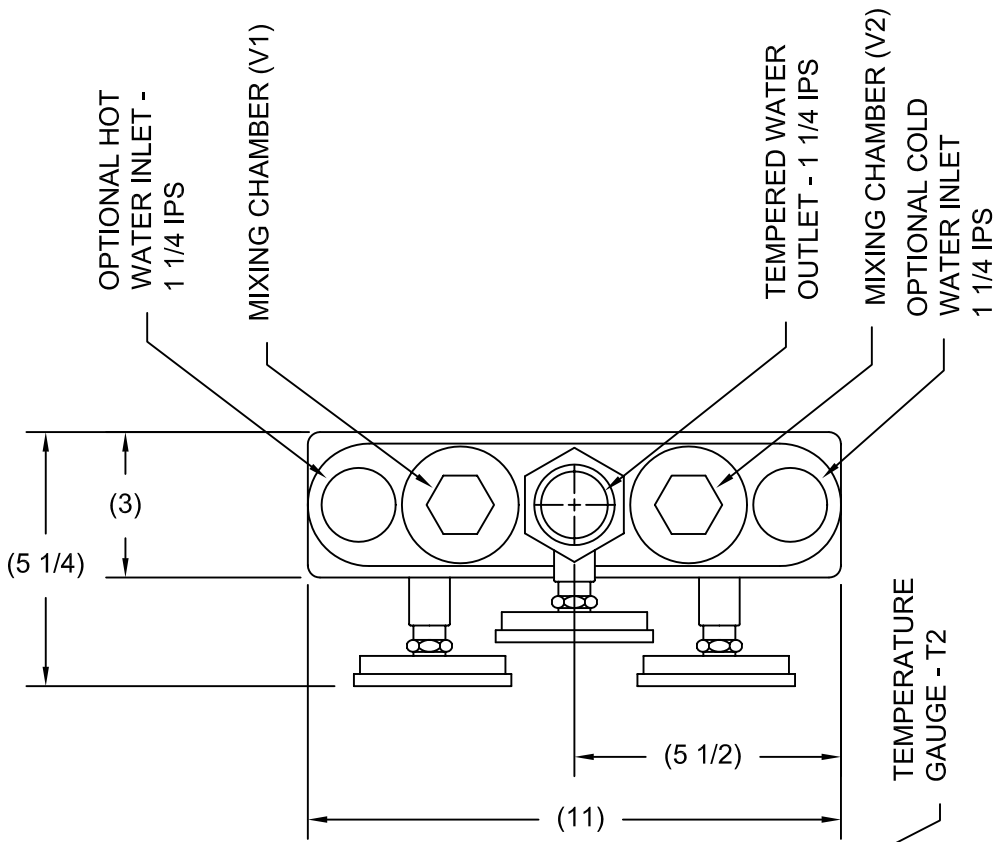


THIS DOCUMENT IS TRUE AND CORRECT AT TIME OF PUBLICATION. CONTINUED PRODUCT IMPROVEMENTS MAKE SPECIFICATIONS AND MEASUREMENTS SUBJECT TO CHANGE WITHOUT NOTICE.

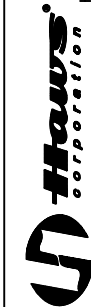
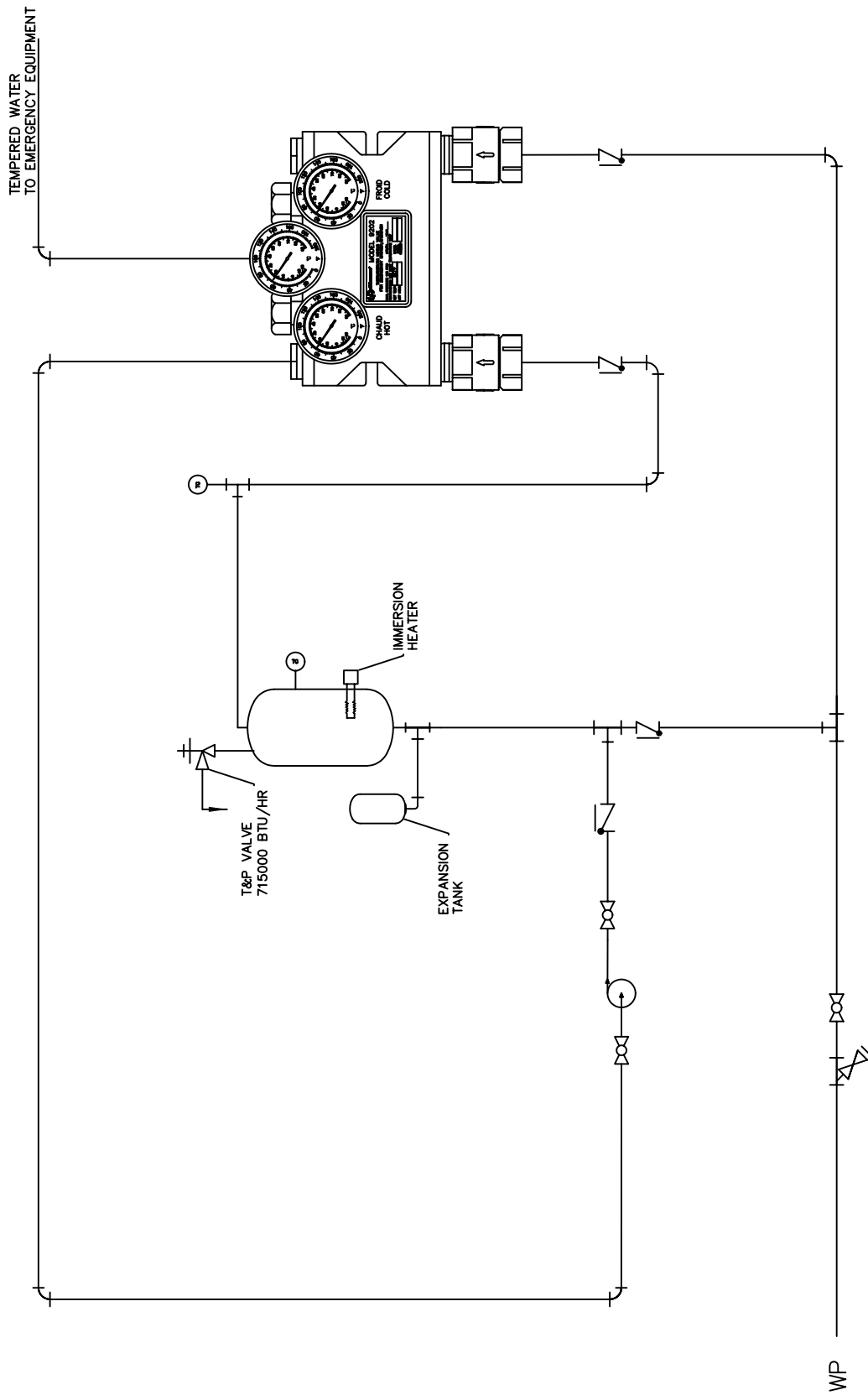


INFO FAX: 1-888-FAX-HAWS (1-888-329-4297)
 1455 Kleppe Ln, Sparks NV, 89431
 Phone: 775-359-4712 Fax: 775-359-7424
 Haws Ag Bachweg 3 CH-3401 Burgdorf Switzerland
 Haws Mfg Pte Ltd 74 Sunget Kadut Loop Singapore 729531
 e-mail: Haws@hawsco.com website: www.hawsco.com

Haws Corporation

REV. NO.	REVISED PER	BY	DATE	SCALE	NA	DRAWING TYPE	INSTALLATION/FABRICATION
5	ECKE 3594	VMC	04/99				
14097A00	9202 MIXING VALVE						
0002080299.D	INFO FAX DOC # 29202						
1	PART NUMBER						
1	SIZE - A						
2	SHEET - 1 OF 2						

THIS DOCUMENT IS TRUE AND CORRECT AT TIME OF PUBLICATION. CONTINUED PRODUCT IMPROVEMENTS MAKE SPECIFICATIONS AND MEASUREMENTS SUBJECT TO CHANGE WITHOUT NOTICE.



INFO FAX : 1-888-FAX-HAWS (1-888-329-4297)
 1455 Kleppe Ln, Sparks NV, 89431
 Phone: 775-359-4712 Fax: 775-359-7424
 Haws Ag, Bachweg 3, CH-3401 Burgdorf, Switzerland
 Haws Mfg Pte Ltd 74 Sungai Kadut Loop Singapore 729531
 e-mail: Haws@hawsco.com website: www.hawsco.com

EQ# NO.	REVISED PER	DATE	BY	DATE	BY
	ECN: 3994	04/99			
APPROVED:					
MODEL(S):	9202 MIXING VALVE				
INFO FAX DOC #:	29202				
SCALE:	1" = 1'				
DRAWING NUMBER:	14097A00				
SIZE:	A				
SHEET:	2 OF 2				

©2006 Haws Corporation - All Rights Reserved HAWS® and other trademarks used in these materials are the exclusive property of Haws Corporation.