

Installation

S19-120HFP

Frost-Proof Drench Shower

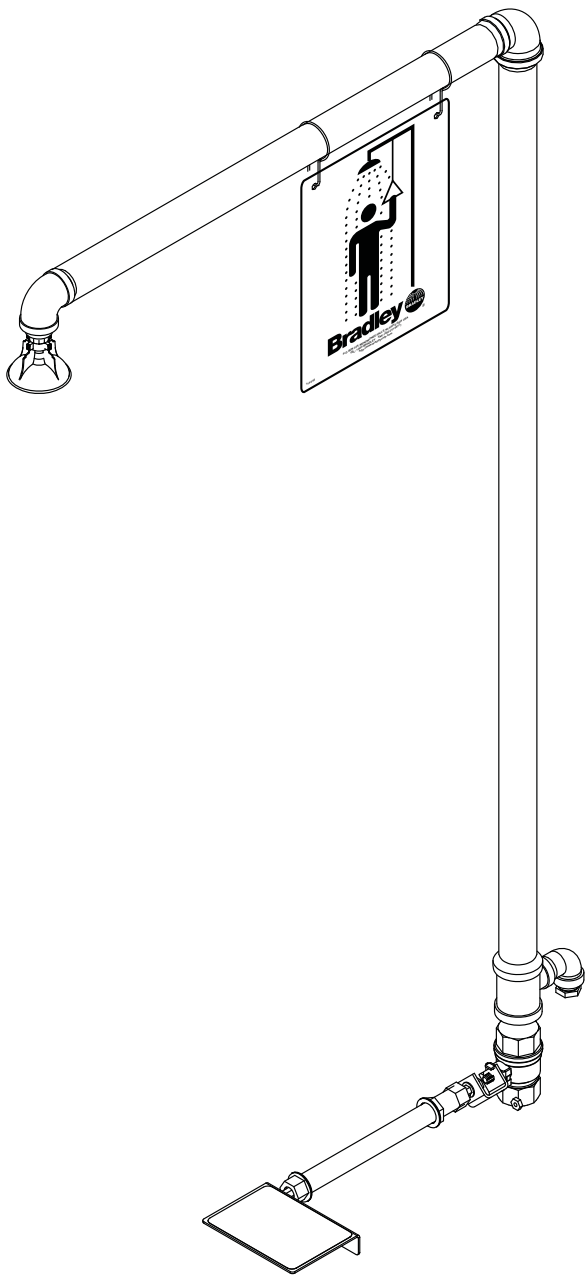
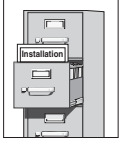


Table of Contents

Pre-Installation Information	2
Installation Instructions	3
Assembly of Components	4
Parts List	5



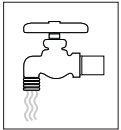
 **IMPORTANT** 



Read this installation manual completely to ensure proper installation, then file it with the owner or maintenance department. Compliance and conformity to drain requirements and other local codes and ordinances is the responsibility of the installer.



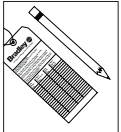
Separate parts from packaging and make sure all parts are accounted for before discarding any packaging material. If any parts are missing, do not begin installation until you obtain the missing parts.



Flush the water supply lines before beginning installation and after installation is complete. Test the unit for leaks and adequate water flow. Main water supply to the eyewash should be "ON" at all times. Provisions shall be made to prevent unauthorized shutoff.



The ANSI Z358.1 standard requires an uninterrupted supply of flushing fluid at a minimum 30 PSI (0.21 MPa) flowing pressure. Flushing fluid should be tepid per ANSI Z358.1.



The inspection and testing results of this equipment should be recorded weekly to verify proper operation. This equipment should be inspected annually to ensure compliance with ANSI Z358.1.



Workers who may come in contact with potentially hazardous materials should be trained regarding the placement and proper operation of emergency equipment per ANSI Z358.1.



For questions regarding the operation or installation of this product, visit www.bradleycorp.com or call 1-800-BRADLEY.

Product warranties and parts information may also be found under "Products" on our web site at www.bradleycorp.com.

Installation

Supplies Required:

- Teflon tape and pipe sealant
- Miscellaneous piping (refer to dotted lines)
- Piping to 1" NPT water supply inlet and 1/4" NPT female weep connection
- Adequate supply pipe supports
- Minimum 4" drain to accommodate 30 gallons per minute discharge for shower waste
- OPTIONAL: sign-mounting hardware

Step 1: Assemble components

1. Assemble the components as shown on page 4.
 - Apply pipe sealant to all male-threaded pipe joints.
 - Use a strap wrench around pipes when tightening to prevent marring.
 - Bottom edge of showerhead should be 7'-0" (2134 mm) from the floor.

Step 2: Install operating stem support sleeve

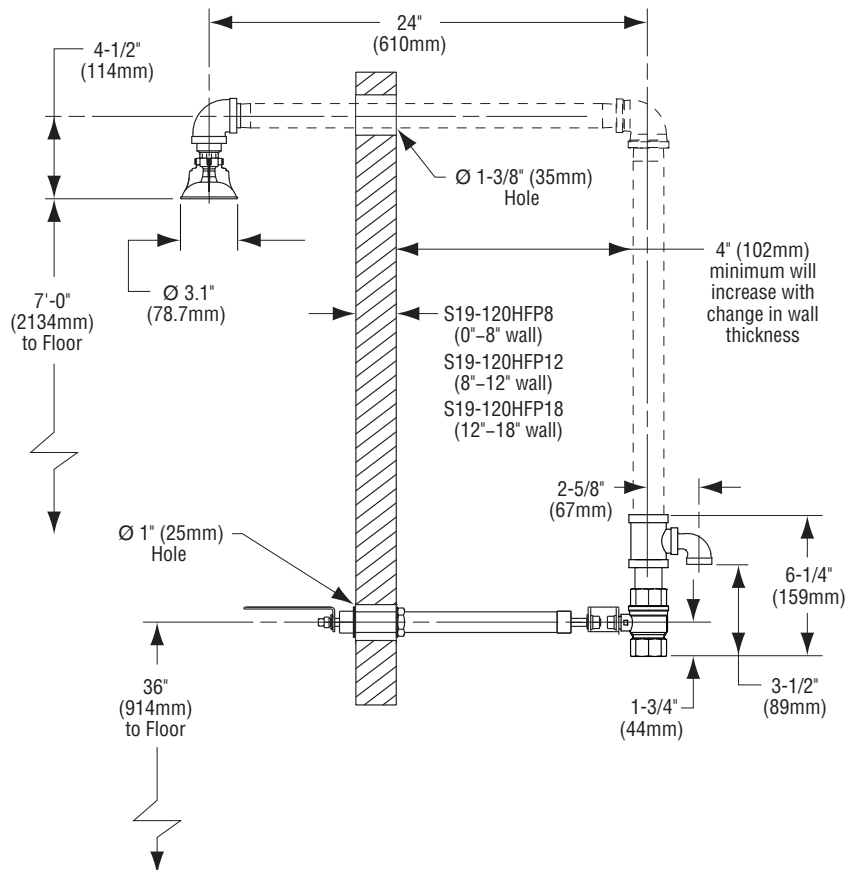
NOTE: This unit has been designed to accommodate varying wall thicknesses. When installing the operating stem support sleeve it will be necessary to cut off one or both ends of the sleeve so that 5/8" of threaded pipe protrudes from both sides of the wall.

1. Connect water supply piping to 1" NPT inlet on unit (piping supplied by installer). Provide adequate supports (supplied by installer) for supply pipe using pipe hangers or other means.
2. Hang the safety sign from the unit with the curtain hooks provided (or mount it to the wall using sign-mounting hardware by installer).
3. Open water supply lines. Test for leaks and adequate water flow.

Step 3: Connect water supply

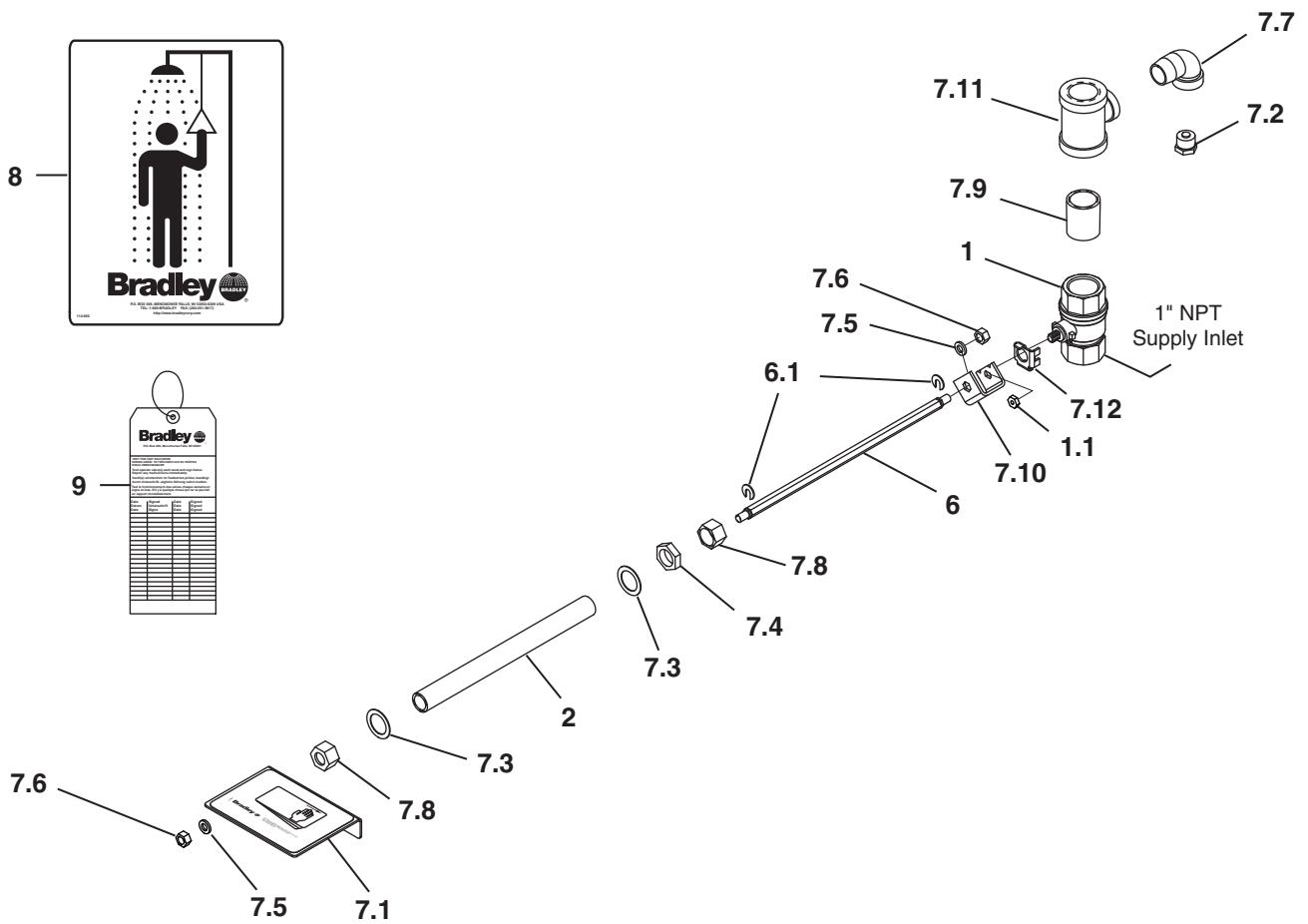
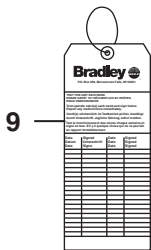
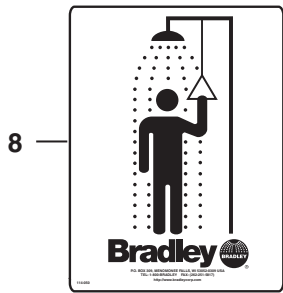
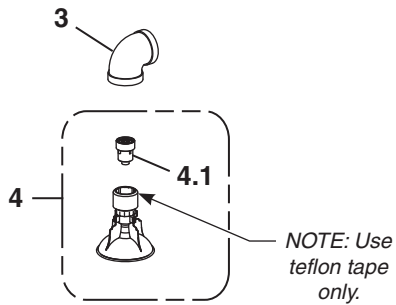
IMPORTANT: Do not rely on Bradley's Drench Shower to support supply piping.

1. Connect water supply piping to 1" NPT inlet on unit (piping supplied by installer). Provide adequate supports (supplied by installer) for supply pipe using pipe hangers or other means.
2. Connect drain piping (supplied by installer) to the 1-1/4" NPT female weep connection.
3. Hang the safety sign from the unit with the curtain hooks provided (or mount it to the wall using sign-mounting hardware by installer).



NOTE: All dimensions assume standard thread engagement. Variations in manufacturing allow for +/- 1/8" (3mm) per threaded joint. To find the tolerance of a dimension, add the number of thread joints in between a dimension and multiply it by 1/8" (3mm).

Assembly of Components



Parts List

Item	Part No.	Qty	Description	Item	Part No.	Qty	Description
1	S27-278	1	Stay-Open Ball Valve 1" NPT w/Nut	7.1	S08-308	1	Handle Assembly
1.1	110-214	1	Nut only	7.2	S29-068	1	Weep Valve Assembly
2	113-006NN	1	Pipe 1/2" NPT (0"-8")	7.3	124-001CB	2	Washer
	113-006NR	1	Pipe 1/2" NPT (8"-12")	7.4	110-115	1	Nut
	113-006NU	1	Pipe 1/2" NPT (12"-18")	7.5	142-002BK	2	Lockwasher
3	169-847	1	90° Elbow 1" NPT	7.6	161-036	2	Hex Nut
4	S24-188	1	Plastic Showerhead Assembly	7.7	169-025	1	90° Street Elbow 1/2" NPT
4.1	S24-187	1	Flow Control Assembly, 23 GPM	7.8	110-191	2	Connector Nut
5	151-001	2	Curtain Hook	7.9	113-006LN	1	Pipe
6	S21-067	1	(0"-8") Operating Stem	7.10	128-141	1	Handle
	S21-067A	1	(8"-12") Operating Stem	7.11	169-840	1	Tee, Reducing
	S21-067B	1	(12"-18") Operating Stem	7.12	140-720	1	Stop Bracket
6.1	132-042	2	Retaining Ring	8	114-051	1	Safety Sign
7	S45-458	1	HFP Fittings	9	204-421	1	Emergency Inspection Tag