

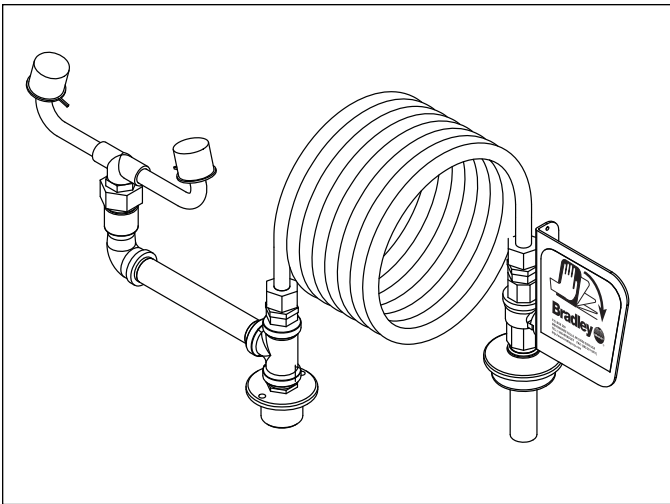
Installation

S19-240E

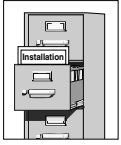
Deck-Mounted Drench Hose Eyewash

Table of Contents

Pre-Installation Information	2
Installation Instructions	3
Assembly of Components	4
Parts List	4



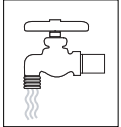
 **WARNING** 



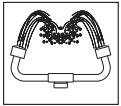
Read this installation manual completely to ensure proper installation, then file it with the owner or maintenance department. Compliance and conformity to drain requirements and other local codes and ordinances is the responsibility of the installer.



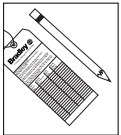
Separate parts from packaging and make sure all parts are accounted for before discarding any packaging material. If any parts are missing, do not begin installation until you obtain the missing parts.



Flush the water supply lines before beginning installation and after installation is complete. Test the unit for leaks and adequate water flow. Main water supply to the eyewash should be "ON" at all times. Provisions shall be made to prevent unauthorized shutoff.



The ANSI Z358.1 standard requires an uninterrupted supply of flushing fluid at a minimum 30 PSI (0.21 MPa) flowing pressure. Flushing fluid should be tepid per ANSI Z358.1.



The inspection and testing results of this equipment should be recorded weekly to verify proper operation. This equipment should be inspected annually to ensure compliance with ANSI Z358.1.



Workers who may come in contact with potentially hazardous materials should be trained regarding the placement and proper operation of emergency equipment per ANSI Z358.1.



For questions regarding the operation or installation of this product, visit www.bradleycorp.com or call 1-800-BRADLEY.

Product warranties may also be found under "Product Information" on our web site at www.bradleycorp.com.

Installation

NOTE: Flush the water supply line before beginning installation.

Supplies Required:

- (2) #10 fasteners to attach flange bushing to deck
- Pipe sealant
- Piping to 1/2" IPS water supply inlet on unit
- Sign-mounting hardware

Step 1: Install eyewash

NOTE: Refer to Figure 1 when installing the eyewash unit.

1. Measure, scribe and drill a 1" diameter hole (for the 1/2" water inlet shank) through the deck at the location shown in Figure 1.
2. Measure, scribe and drill a 1-3/8" diameter hole (for the flange bushing) through the deck at the location shown in the detail illustration below.
3. Measure, scribe and drill two holes for #10 fasteners (provided by installer) through the deck at the location shown in the detail illustration below.
4. Insert the flange bushing into the 1-3/8" diameter clearance hole and secure the bushing to the deck with the two #10 fasteners (provided by installer).
5. Insert the 1/2" inlet shank with ball valve into the 1" diameter clearance hole and secure the shank to the deck with the 1/2" nut and washer provided.
6. Insert the eyewash assembly at the shank pin into the flange bushing.
7. Connect the 1/2" water inlet piping to the eyewash unit.
8. Attach the handle to the ball valve using the nut and lockwasher (refer to Figure 2 on page 4 for clarity).
9. Open the water supply lines. Test for leaks and adequate water flow.

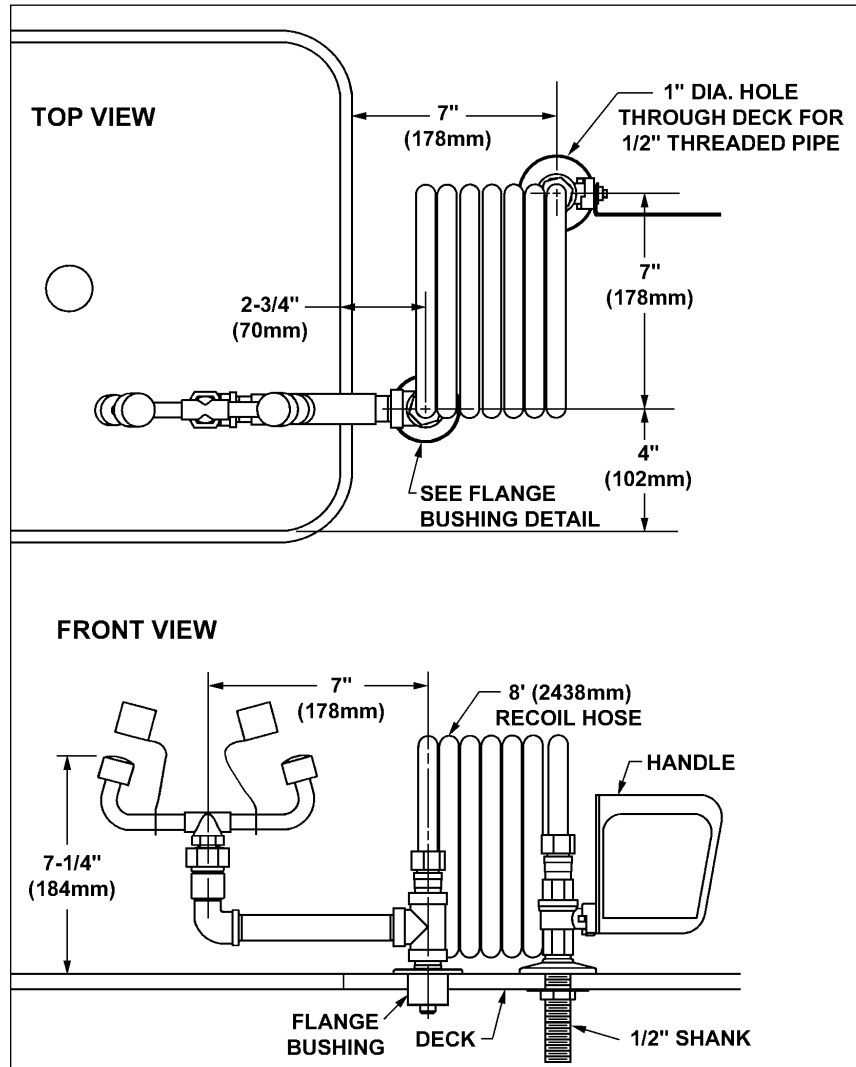
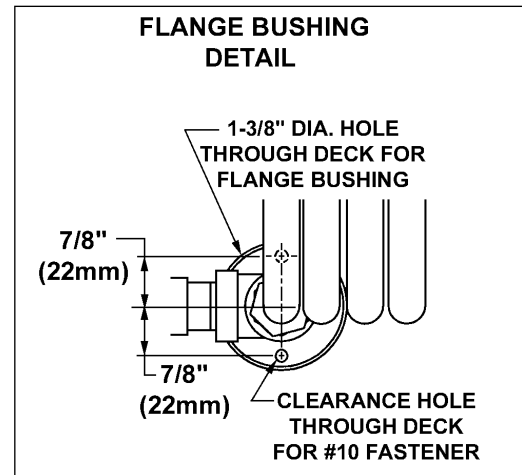


Figure 1



Assembly of Components and Parts List

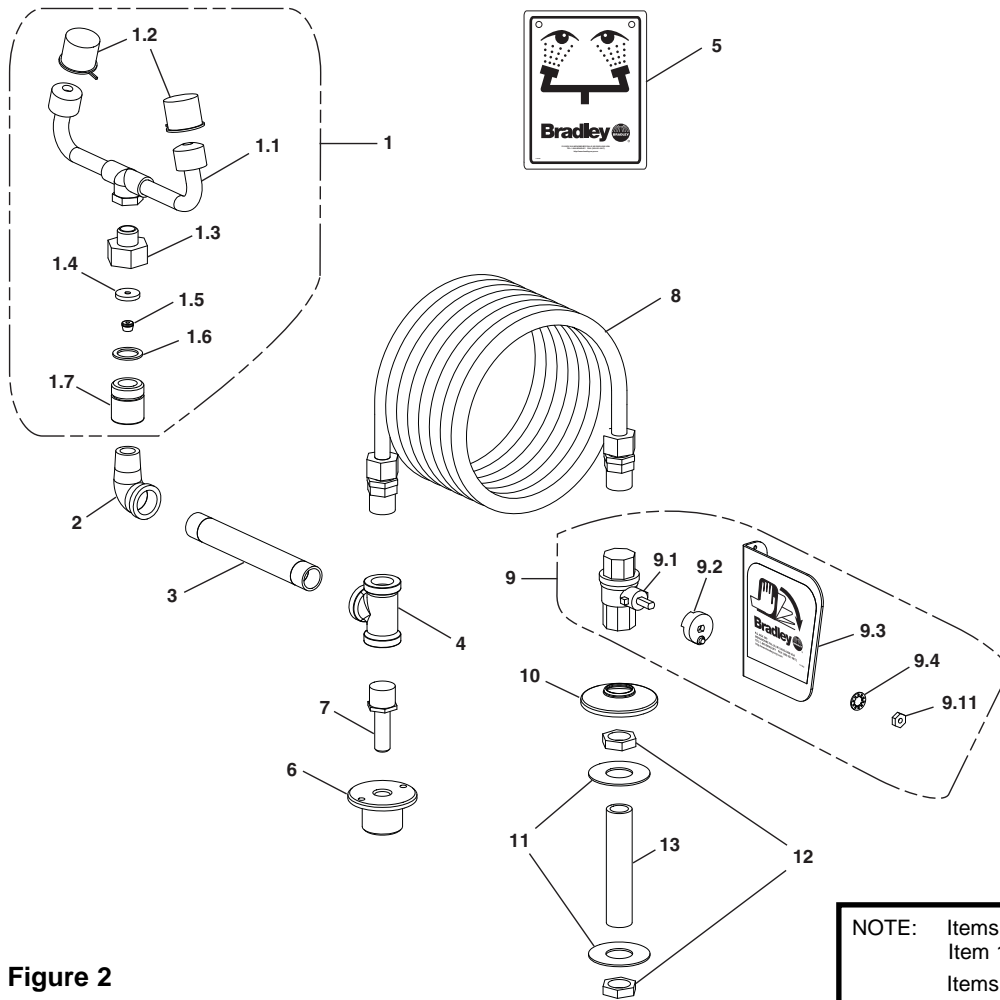


Figure 2

NOTE: Items 1.1-1.7 come preassembled as Item 1.
Items 2, 3 and 4 come preassembled.

Item	Part No.	Qty	Description	Item	Part No.	Qty	Description
1	S05-063B	1	Eyewash Assembly	7	152-068A	1	Shank Pin
1.1	S05-091	1	Eyewash Yoke	8	269-1611	1	8' Recoil Hose
1.2	107-371	2	Dust Cover	9	S30-098	1	1/2" Ball Valve/Handle Prepack
1.3	110-237	1	Tailpiece, Plated	9.1	S27-282	1	1/2" Ball Valve with Nut
1.4	142-040	1	Flo-Et Retainer	9.11	110-215	1	Nut only
1.5	125-032	1	Flo-Et	9.2	153-372R	1	Ball Valve Adapter
1.6	124-001AF	1	Fiber Washer	9.3	S08-336	1	Handle Assembly
1.7	153-146	1	Union Adapter	9.4	142-002DA	1	Lockwasher
2	169-862	1	90° Street Elbow	10	300-0375	1	Flange
3	113-1059	1	Supply Pipe	11	142-002CB	2	7/8" Washer
4	269-280	1	Tee, 1/2" NPT	12	110-115	2	Nut
5	114-051	1	Safety Sign	13	113-1058	1	1/2" Shank
6	153-417	1	Flange Bushing				

Prepack S30-071 includes Items 9.11, 9.2, 9.3, 9.4