

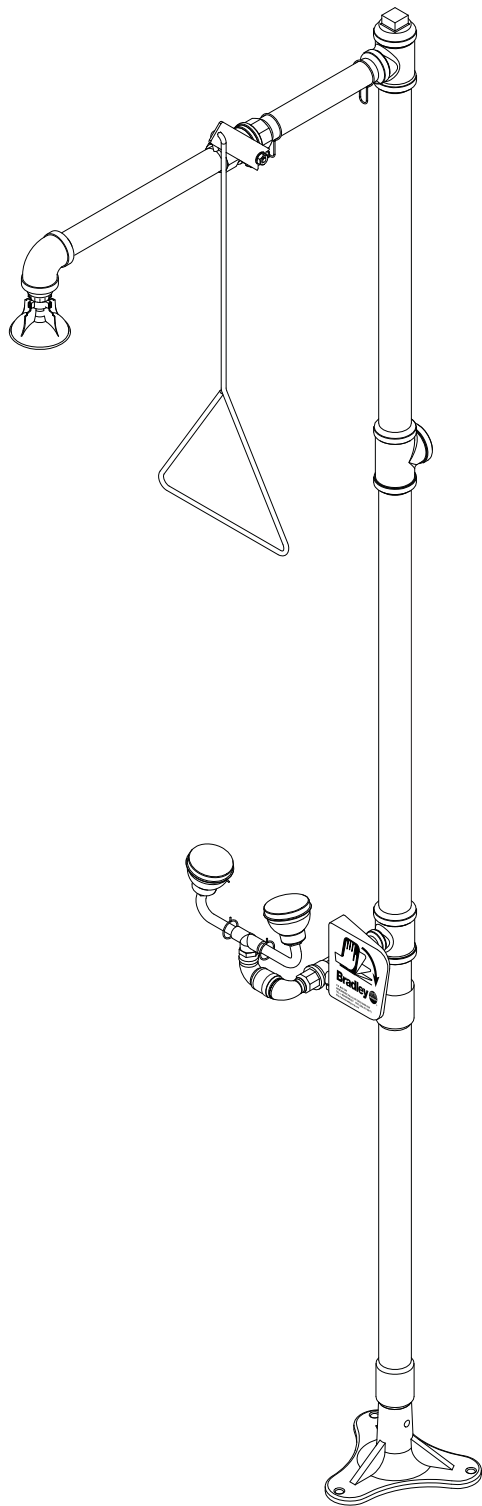
# Installation

## S19-310GG

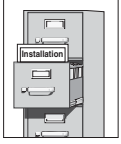
### Combination Drench Shower and Eye/Face Wash

#### Table of Contents

|                                    |   |
|------------------------------------|---|
| Pre-Installation Information ..... | 2 |
| Installation .....                 | 3 |
| Assembly of Components .....       | 4 |
| Parts List .....                   | 5 |



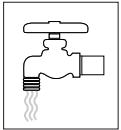
## ⚠ WARNING ⚠



Read this installation manual completely to ensure proper installation, then file it with the owner or maintenance department. Compliance and conformity to drain requirements and other local codes and ordinances is the responsibility of the installer.



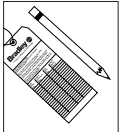
Separate parts from packaging and make sure all parts are accounted for before discarding any packaging material. If any parts are missing, do not begin installation until you obtain the missing parts.



Flush the water supply lines before beginning installation and after installation is complete. Test the unit for leaks and adequate water flow. Main water supply to the eyewash should be "ON" at all times. Provisions shall be made to prevent unauthorized shutoff.



The ANSI Z358.1 standard requires an uninterrupted supply of flushing fluid at a minimum 30 PSI (0.21 MPa) flowing pressure. Flushing fluid should be tepid per ANSI Z358.1.



The inspection and testing results of this equipment should be recorded weekly to verify proper operation. This equipment should be inspected annually to ensure compliance with ANSI Z358.1.



Workers who may come in contact with potentially hazardous materials should be trained regarding the placement and proper operation of emergency equipment per ANSI Z358.1.



For questions regarding the operation or installation of this product, visit [www.bradleycorp.com](http://www.bradleycorp.com) or call 1-800-BRADLEY.

Product warranties and service parts information may also be found under "Products" on our web site at [www.bradleycorp.com](http://www.bradleycorp.com).

# Installation

## Supplies Required:

- (3) 3/8" floor anchors and bolts
- Teflon tape and pipe sealant
- Piping to 1 1/4" NPT water supply inlet
- Adequate supply pipe supports
- Minimum 4" (102 mm) drain to accommodate 30 gallons (115 liters) per minute discharge for shower waste
- OPTIONAL: Sign-mounting hardware

*NOTE: Local codes may require the installation of a backflow prevention valve to complete proper installation. Compliance with local codes is the responsibility of the installer. Valve must be tested annually to verify that it is functioning properly. Backflow prevention valves are not included with the fixture and may be supplied by the contractor or purchased from Bradley Corporation.*

## Step 1: Secure base to floor

1. Install three suitable anchors (supplied by installer) for 3/8" bolts in the floor.
2. Bolt the base to the floor anchors using 3/8" bolts (supplied by installer).

## Step 2: Assemble components

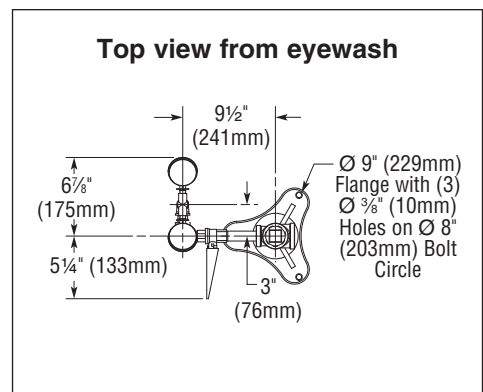
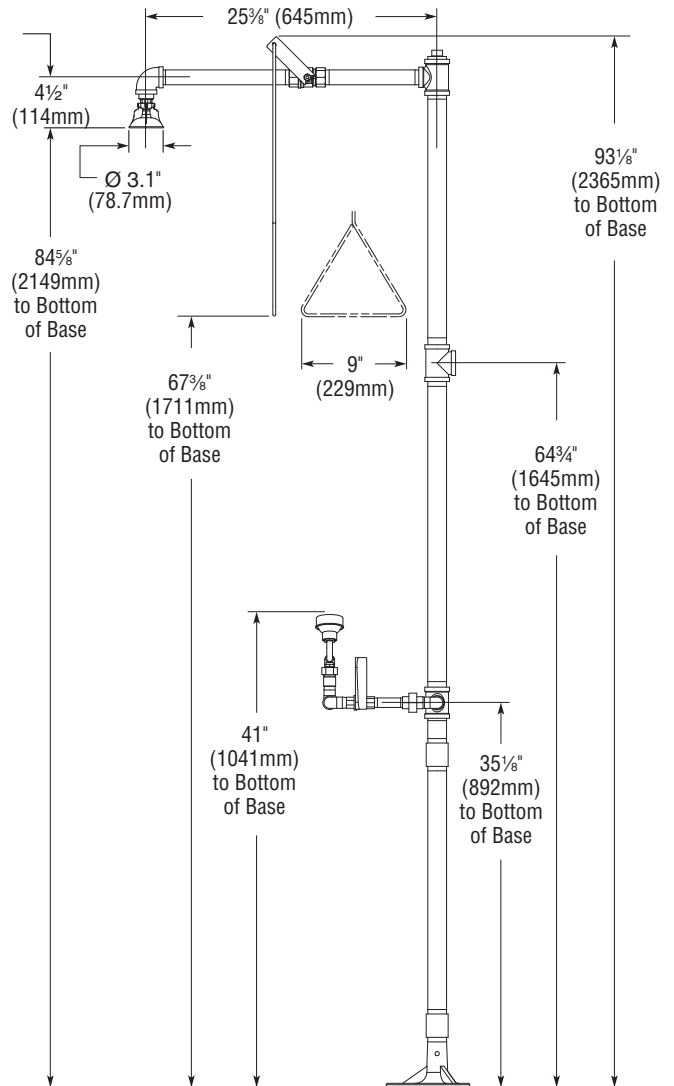
1. Assemble the remaining components as shown on page 4.
  - Apply teflon tape or pipe sealant (supplied by installer) as required to all male-threaded pipe joints.
  - Use the rubber grip pad provided or a strap wrench around pipes when tightening to prevent marring. Place the grip pad on the pipe, then put the wrench over the grip pad and turn the pipe with the wrench.
  - The bottom edge of the showerhead should be 84 5/8" (2149mm) from the bottom of the base.

## Step 3: Connect water supply



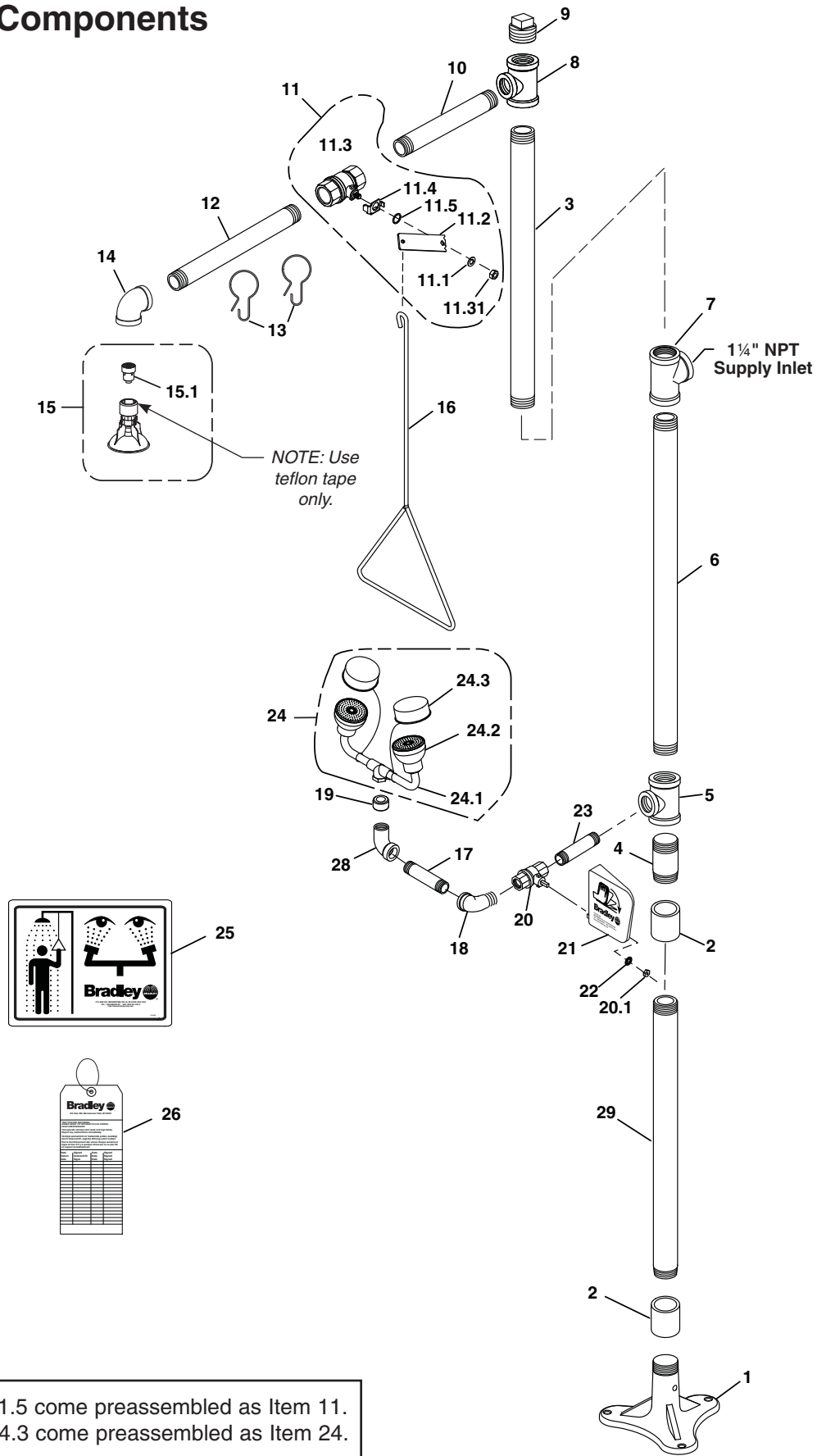
**IMPORTANT: Do not rely on Bradley's Drench Shower to support supply piping.**

1. Connect the water supply piping (supplied by installer) to the 1 1/4" NPT inlet on the unit. Provide adequate supports (supplied by installer) for supply piping using pipe hangers or other means.
2. Hang the safety sign from the unit with the curtain hooks provided (or mount it to the wall using sign-mounting hardware supplied by installer).



**NOTE: All dimensions assume standard thread engagement. Variations in manufacturing allow for +/- 1/8" (3mm) per threaded joint. To find the tolerance of a dimension, add the number of thread joints in between a dimension and multiply it by 1/8" (3mm).**

# Assembly of Components



NOTE: Items 11.1–11.5 come preassembled as Item 11.  
Items 24.1–24.3 come preassembled as Item 24.

## Parts List

| Item  | Part No.  | Qty | Description                  | Item | Part No.  | Qty | Description                   |
|-------|-----------|-----|------------------------------|------|-----------|-----|-------------------------------|
| 1     | 131-059   | 1   | Base                         | 15   | S24-188   | 1   | Showerhead Assembly, Plastic  |
| 2     | 169-853   | 2   | Coupling 1¼"                 | 15.1 | S24-187   | 1   | Flow Control Assembly, 23 GPM |
| 3     | 113-006LW | 1   | Pipe 1¼" NPT x 22½"          | 16   | 128-156A  | 1   | Pull Rod, 25"                 |
| 4     | S06-136   | 1   | Plugged Nipple, 1¼" NPT x 3" | 17   | 113-1084  | 1   | Pipe ½" NPT x 1½"             |
| 5     | 169-841   | 1   | Reducing Tee 1¼" x ½" x 1¼"  | 18   | 169-025   | 1   | Street Elbow                  |
| 6     | 113-006LC | 2   | Pipe 1¼" NPT x 27½"          | 19   | 113-006EF | 1   | ⅜" Nipple Close               |
| 7     | 169-727   | 1   | Pipe Tee 1¼" NPT             | 20   | S27-282   | 1   | ½" Ball Valve w/Nut           |
| 8     | 169-722   | 1   | Reducing Tee 1¼" x 1" x 1¼"  | 20.1 | 110-215   |     | Nut Only                      |
| 9     | 169-724   | 1   | Pipe Plug 1¼" NPT            | 21   | 128-135   | 1   | Handle, Plastic               |
| 10    | 113-006LL | 1   | Pipe 1¼" NPT x 9"            | 22   | 142-002DA | 1   | Lockwasher                    |
| 11    | S30-059   | 1   | Ball Valve Assembly 1"       | 23   | 113-006LQ | 1   | Pipe ½" NPT x 3½"             |
| 11.1  | 142-002DC | 1   | Lockwasher                   | 24   | S05-064D  | 1   | Eye/Face Wash Assembly        |
| 11.2  | 128-129   | 1   | Handle                       | 24.1 | S05-091P  | 1   | Yoke Assembly                 |
| 11.3  | S27-278   | 1   | 1" Ball Valve w/Nut          | 24.2 | S05-135   | 2   | Sprayhead Assembly            |
| 11.31 | 110-214   |     | Nut Only                     | 24.3 | S53-063   | 2   | Dust Cover, Tethered          |
| 11.4  | 140-720   | 1   | Stop Bracket                 | 25   | 114-052   | 1   | Safety Sign                   |
| 11.5  | 124-048   | 1   | Washer, Friction             | 26   | 204-421   | 1   | Emergency Inspection Tag      |
| 12    | 113-006LK | 1   | Pipe 1" NPT x 12"            | 27   | 269-915   | 1   | Grip Pad (not shown)          |
| 13    | 151-001   | 2   | Curtain Hook                 | 28   | 169-1069  | 1   | ELbow ⅜" x ½"                 |
| 14    | 169-847   | 1   | 90° Elbow 1"                 | 29   | 113-006NK | 1   | Pipe 1¼" NPT x 24⅜"           |

Prepack S45-122 includes items 20, 20.1, 21, 22

Prepack S45-123 includes items 20.1, 21, 22