



# INSTALLATION, OPERATION & MAINTENANCE INSTRUCTIONS

1455 Kleppe Lane ♦ Sparks, NV 89431-6467 ♦ (775) 359-4712 ♦ Fax (775) 359-7424  
HAWS AG ♦ Bachweg 3 ♦ CH-3401 Burgdorf ♦ Switzerland  
Haws Mfg. Pte Lt. ♦ 2A Sungei Kadet Drive ♦ Singapore 729554  
Avlis-Avenida Senador, Testonio Vilela ♦ 505 Jardim Aeroporto ♦ Itu, S.P. 13304-550 ♦ Brasil  
E-mail: [haws@hawsco.com](mailto:haws@hawsco.com) ♦ website: [www.hawsco.com](http://www.hawsco.com)

No. 2080604(4)

## Model 8356WC Pull-Down Shower Eye/Face Wash

**NOTE TO INSTALLER:** Please leave this information with the Maintenance Department.

### LIMITED WARRANTY

HAWS® warrants that all of its products are guaranteed against defective material or poor workmanship for a period of **one year from date of shipment**. HAWS liability under this warranty shall be discharged by furnishing without charge F.O.B. HAWS Factory any goods, or part thereof, which shall appear to the Company upon inspection to be of defective material or not of first class workmanship, provided that claim is made in writing to company within a reasonable period after receipt of the product. Where claims for defects are made, the defective part or parts shall be delivered to the Company, prepaid, for inspection. HAWS will not be liable for the cost of repairs, alterations or replacements, or for any expense connected therewith made by the owner or his agents, except upon written authority from HAWS, Sparks, Nevada. HAWS will not be liable for any damages caused by defective materials or poor workmanship, except for replacements, as provided above. Buyer agrees that Haws has made no other warranties either expressed or implied in addition to those above stated, except that of title with respect to any of the products or equipment sold hereunder and that HAWS shall not be liable for general, special, or consequential damages claimed to arise under the contract of sale.

The emergency equipment manufactured by HAWS is warranted to function if installation and maintenance instructions provided are adhered to. The units also must be used for the purpose, which they were intended. This product is intended to supplement first-aid treatment. Due to widely varying conditions HAWS cannot guarantee that the use of this emergency equipment will prevent serious injury or the aggravation of existing or prior injuries.

**NO OTHER WARRANTIES EXPRESSED OR IMPLIED ARE AUTHORIZED, PROVIDED OR GIVEN BY HAWS.**

**SHOULD YOU EXPERIENCE DIFFICULTY WITH THE INSTALLATION OF THIS MODEL, PLEASE CALL:**

**1-800-766-5612**

**FOR PARTS CALL:**

**1-800-758-9378**

**(U.S.A. AND CANADA ONLY) MONDAY-THURSDAY: 6:00 A.M. – 4:00 P.M. PST  
FRIDAY: 6:00 A.M – 1:00 P.M. PST**

**LOCATION OF UNIT:** The Model 8356WC Pull-Down Shower Eye/Face Wash should be installed in close proximity to potential accident areas. It should be clearly identified, free from obstructions and easy to access.

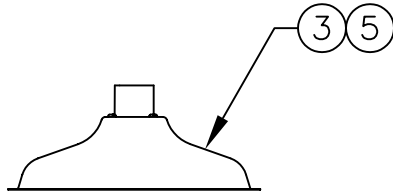
**SUPPLY LINE:** The minimum recommended line size is 1"IPS with 30-90 psi (2-6 ATM) flowing pressure at supply inlet. Where sediment or mineral content is a problem, an inlet filter is recommended.

**PLUMBING CONNECTIONS:** Inlet supply is male 1"IPS.

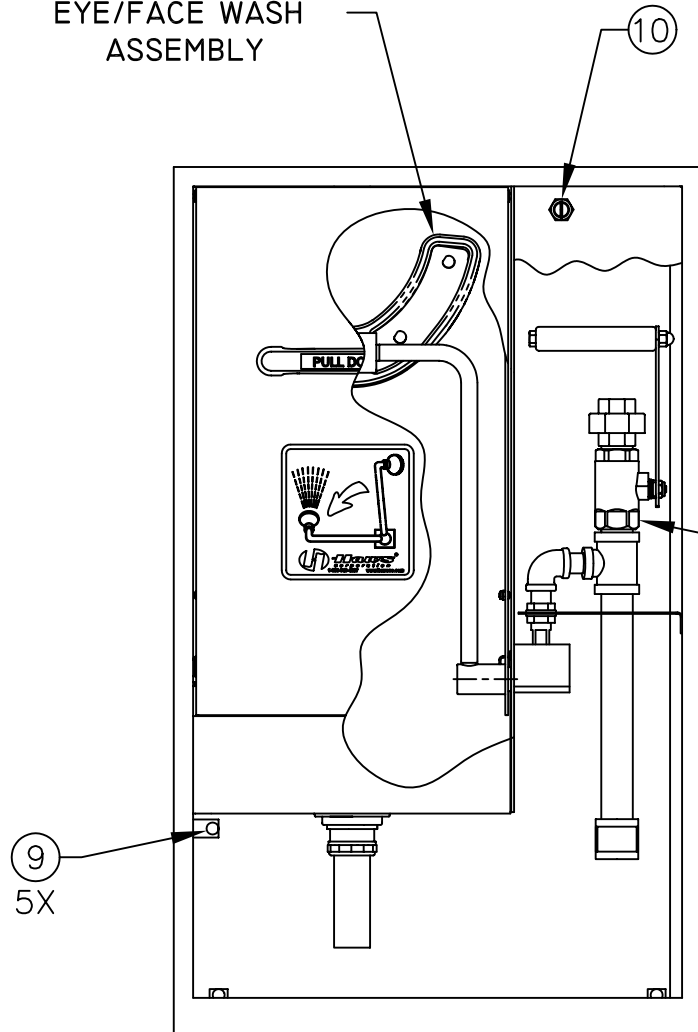
<b>TROUBLESHOOTING</b>	
<b>PROBLEM</b>	<b>REPAIR CHECKLIST</b>
1. No flow.	1. Check the main shut-off valve.
2. Insufficient water flow at eye/face wash.	2a. Verify minimum 30 psi (2 ATM) flowing supply line pressure.  b. Probable clogging of flow control due to inadequate line flushing. Turn water supply off. After first loosening (2) bolts that connect both handle and bracket to the pan, lift eye/face wash head and remove by turning counterclockwise. Remove (4) screws and separate head. Clean any debris trapped within heads, jets, or foam filters. Without removing flow control from lower half of head, inspect flow control and remove any debris. When reassembling head, tighten screws only enough to seal head. Avoid over-tightening screws as this will deform surface of heads. (Very little torque is required to seal head).
3. Eye/face wash stream does not meet desired eye level.	3a. Possible blocked flow control, see above solution.  b. Possible non-leveled eyewash assembly.  c. Possible low supply pressure.
4. Insufficient water flow at the showerhead, however, eye/face wash is sufficient.	4. Probable clogging of flow control inside showerhead. Remove showerhead by unscrewing it and clean rubber flow control.

ITEM	DESCRIPTION
1	SP170 TEST TAG
2	SP178 SHOWER/EYEWASH SIGN
3	8127FC SHOWER HEAD
4	1" IPS SHOWER BALL VALVE
5	FLOW CONTROL 0003138392.3
6	FLOW CONTROL 0002477644
7	O-RING 0004754941
8	FOAM FILTERS 0002319948
9	RUBBER BUMPER 0001245190
10	COVER LOCK 0001432565
--	VRK 7650 VALVE REPAIR KIT

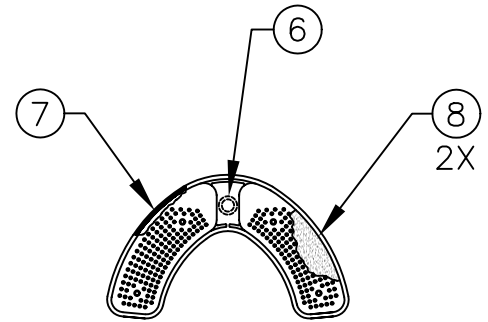
# PARTS BREAKDOWN



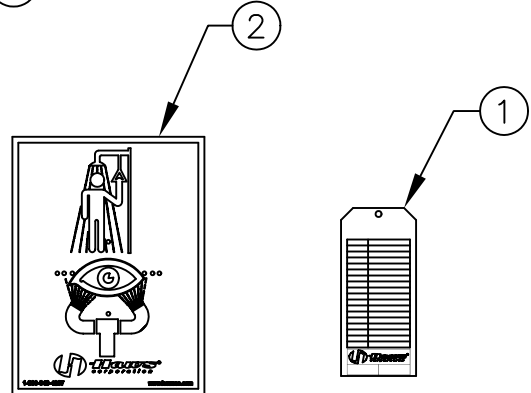
EYE/FACE WASH ASSEMBLY



INSIDE HEAD



EYE/FACE WASH ASSEMBLY



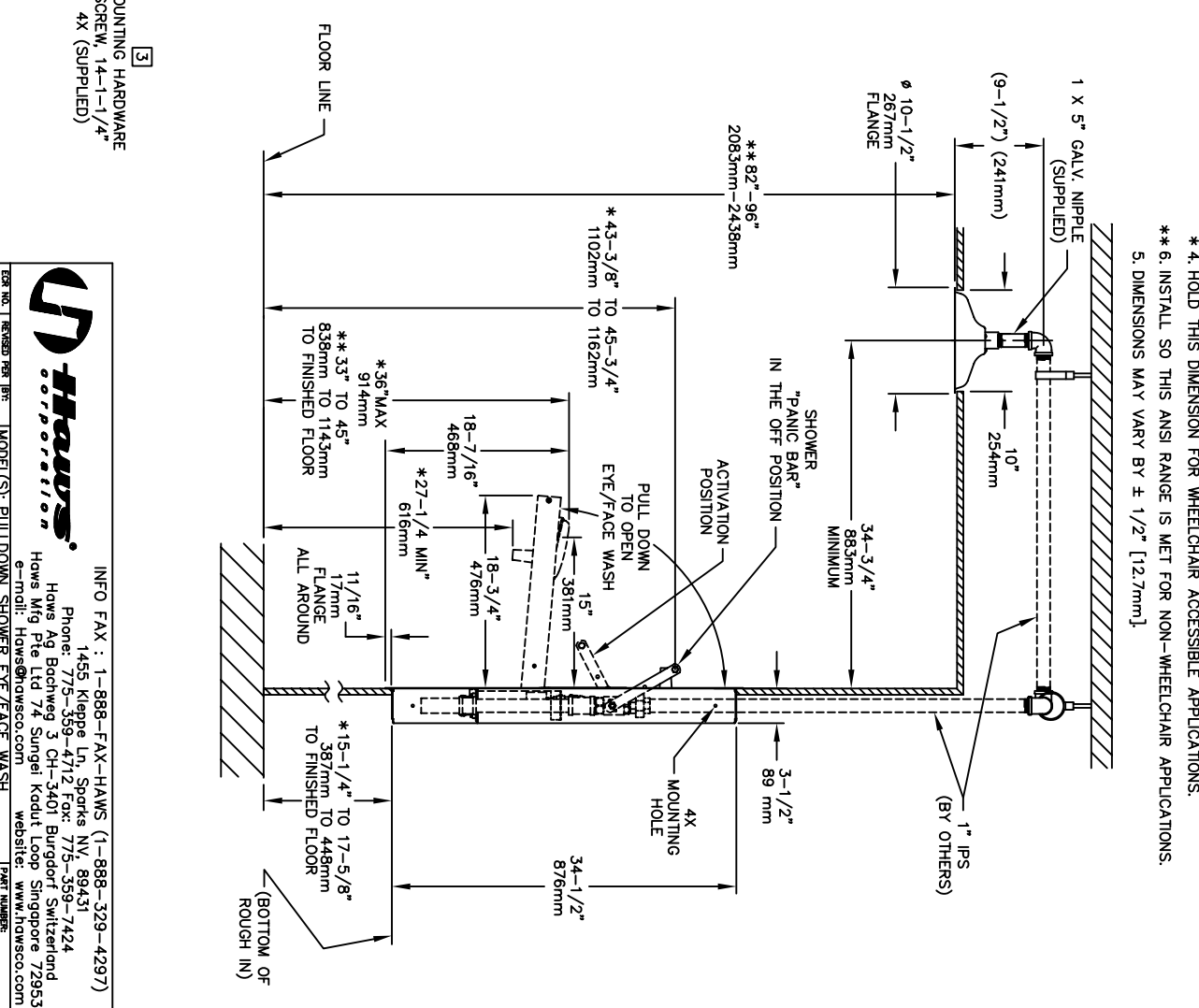
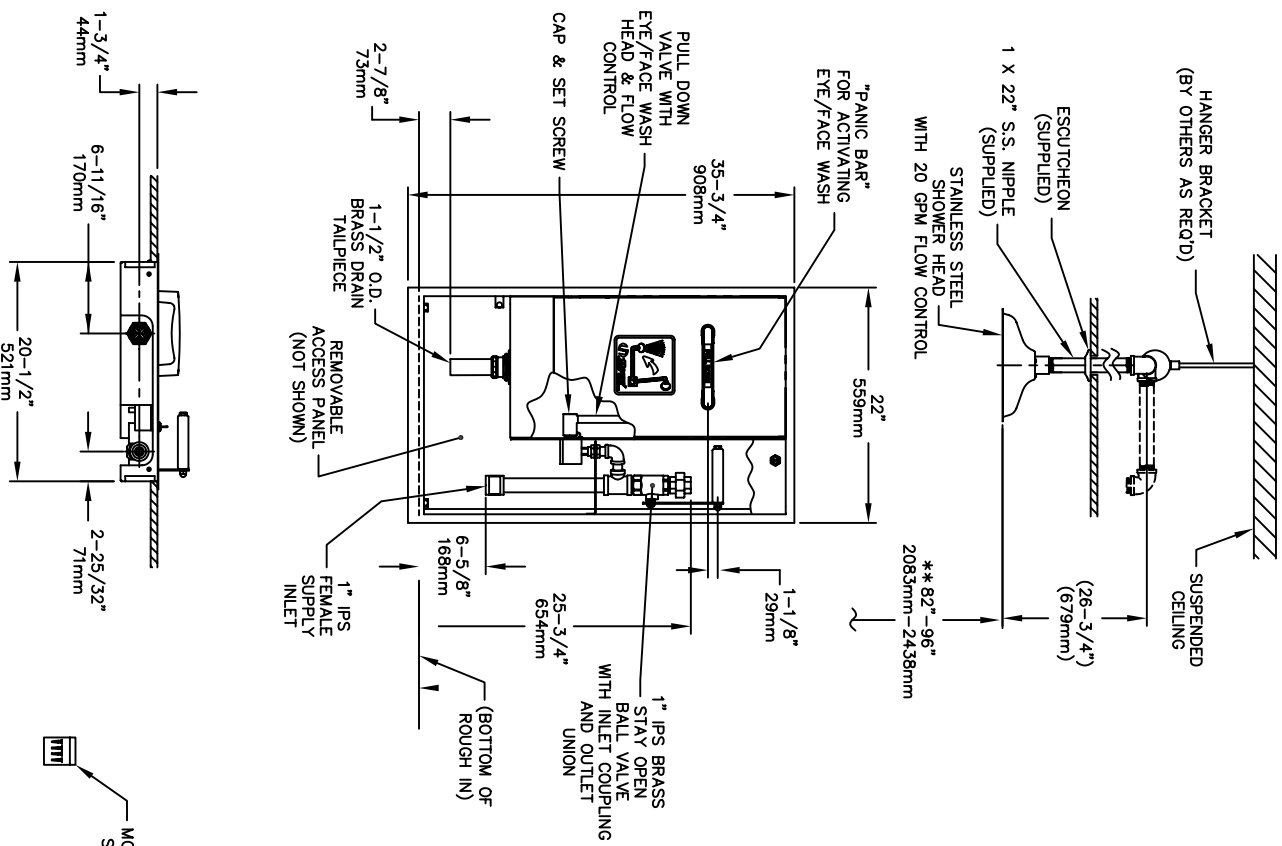
**WHEN ORDERING  
PARTS PLEASE  
SPECIFY YOUR  
MODEL NUMBER**



1455 KLEPPE LANE | BACHWEG 3  
SPARKS, NEVADA | CH3401 BURGDORF  
SWITZERLAND

DRAWN BY: RTM	DATE: 10/25/04	CHECK BY:	APP'D BY:	SCALE: 1/4
TITLE: PULLDOWN SHOWER EYE/FACE WASH 8356WC			PART NUMBER: 0002080604	
DRAWING TYPE: PARTS BREAKDOWN			DRAWING NUMBER: 15188C00	
			REV. 4	

## OPTIONAL SHOWER HEAD INSTALLATION



- NOTES:
1. WHEN INSTALLING THIS UNIT, LOCAL, STATE OR FEDERAL CODES SHOULD BE ADHERED TO. WASTE CONNECTION MUST ADHERE TO LOCAL HEALTH AND PLUMBING CODES.
  2. FLOW RATE FOR EYE/FACE WASH IS 7 GPM AND EXCEEDS ANSI STANDARD Z358.1.
  3. USE SUPPLIED SCREWS TO INSTALL THE UNIT ON WALL STRUCTURE.
  4. HOLD THIS DIMENSION FOR WHEELCHAIR ACCESSIBLE APPLICATIONS.
  5. DIMENSIONS MAY VARY BY  $\pm 1/2"$  [12.7mm].

**Haws Corporation**

INFO FAX : 1-888-FAX-HAWS (1-888-329-4297)

1455 Kiappa Ln, Sparks, NV, 89431  
 Phone: 775-359-4712 Fax: 775-359-7424  
 Haws AG, Burgdorf, Switzerland  
 Haws King Pte Ltd, 74 Sungei Kodat Loop, Singapore 729531  
 e-MAIL: Haws@hawsco.com website: www.hawsco.com

MODEL(S): PULLDOWN SHOWER EYE/FACE WASH  
 INFO FAX DOC # 2835692  
 SCALE: 1/8" = 1"

DATE: 10/25/04  
 DRAWN: ECH: 3494  
 CHECKED: JCH: 3494  
 APPROVED: JCH: 3494

FIG. NO. 15187A00  
 SIZE: A 1 SHEET 1 OF 1