



T&S BRASS AND BRONZE WORKS, INC.
 2 Saddleback Cove / P.O. Box 1088
 Travelers Rest, SC 29690



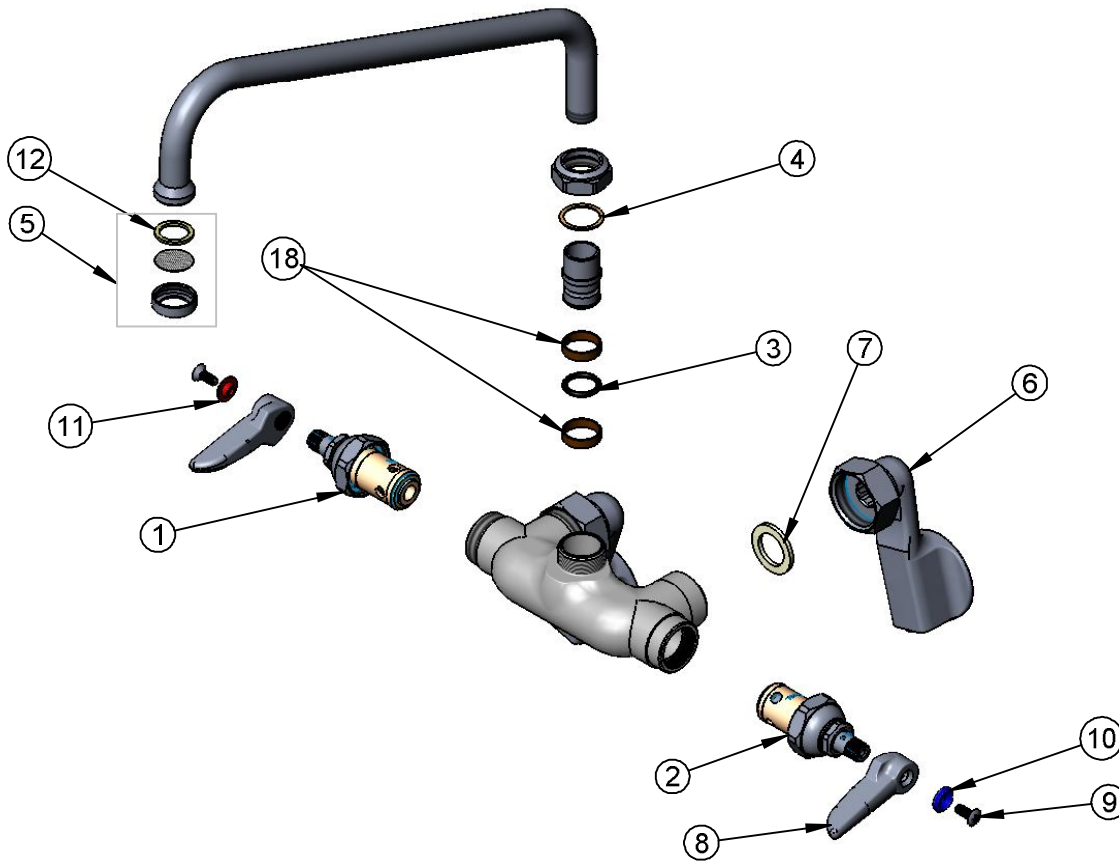
REG. #A2601
 ISO #9001

Model No.
B-0236

Item No.

Travelers Rest, SC: 800-476-4103 Simi Valley, CA: 800-423-0150 Fax: 864-834-3518 www.tsbrass.com

ITEM NO.	SALES NO.	DESCRIPTION
1	005960-40	Spindle Asm, Eterna "Hot"
2	005959-40	Spindle Asm. Eterna "Cold"
3	001074-45	O-Ring
4	009538-45	Swivel Washer
5	B-PT	Stream Regulator
6	00GG	Flange Assembly, 1/2" NPT, Adjustable
7	001019-45	Washer, Coupling Nut
8	001638-45	Lever Handle
9	000922-45	Lever Handle Screw
10	001660-45	Blue Index-CW
11	001661-45	Red Index-HW
12	009638-45	Washer
18	011429-45	Swivel Sleeves (2)



Product Specifications:

Combination Sink Polish Chrome Faucet with 12" Swing
 Nozzle & Adjustable Inlet Arms

Drawn ARH	Checked DHL	Approved JHB
Scale: 1:8		Date: 12/20/07