



# T&S BRASS AND BRONZE WORKS, INC.

2 Saddleback Cove / P.O. Box 1088  
Travelers Rest, SC 29690



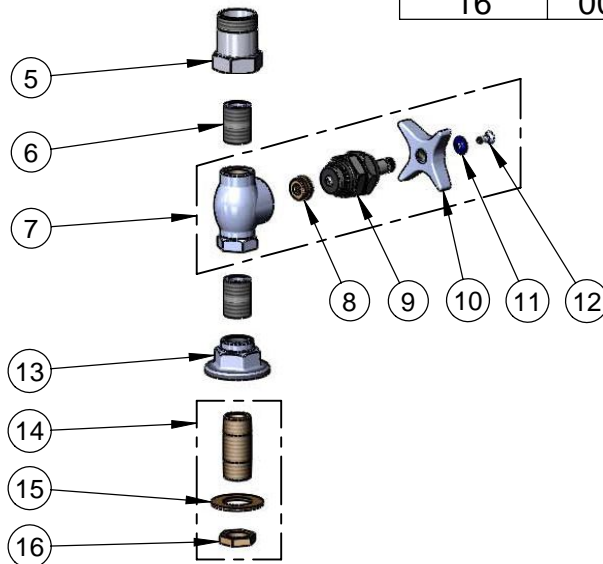
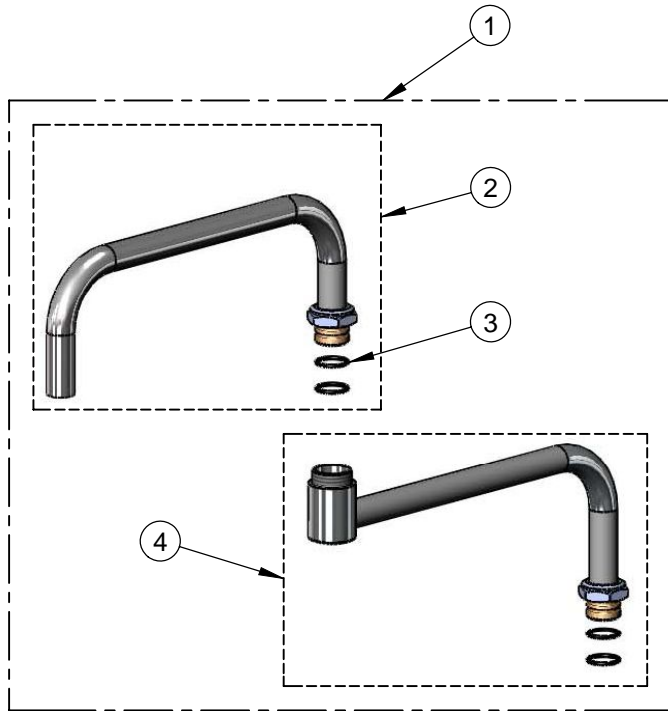
REG. #A2601  
ISO #9001

Model No.

**B-0298**

Item No.

Travelers Rest, SC: 800-476-4103 Simi Valley, CA: 800-423-0150 Fax: 864-834-3518 www.tsbrass.com



ITEM NO.	SALES NO.	DESCRIPTION
1	116X	24" Double Joint Big-Flo Swing Nozzle
2	117X	12" Front Section
3	001068-45	O-ring, Size -118
4	118X	12" Back Section
5	000594-25	Swivel Body x 1/2" NPT
6	002534-25	Close Nipple, 1/2" x 1 5/32" Lg Rough Chrome
7	002900-40	Valve Assembly w/ 4-Arm Handle
8	000764-20	Seat, B-290 RM
9	006482-40	Spindle Asm, B-0290 (RH)
10	002521-45	4-Arm Handle
11	001660-45	Blue Index-CW
12	000922-45	Lever Handle Screw
13	000013-40	Flange, 1/2" NPT Wall Mount
14	B-0425	Supply Nipple Unit, 1/2" NPT
15	000999-45	Brass Lock Washer
16	002954-45	Shank Lock Nut

**Product Specifications:**

Full Flow Faucet w/ Big-Flo 24" Double Swing Nozzle, Control Valve & 1/2" NPT Female Inlet

Drawn <b>DMH</b>	Checked <b>KJG</b>	Approved <b>JHB</b>
Scale: <b>NTS</b>		Date: <b>02/08/10</b>