



T&S BRASS AND BRONZE WORKS, INC.

2 Saddleback Cove / P.O. Box 1088
Travelers Rest, SC 29690



REG. #A2601
ISO #9001

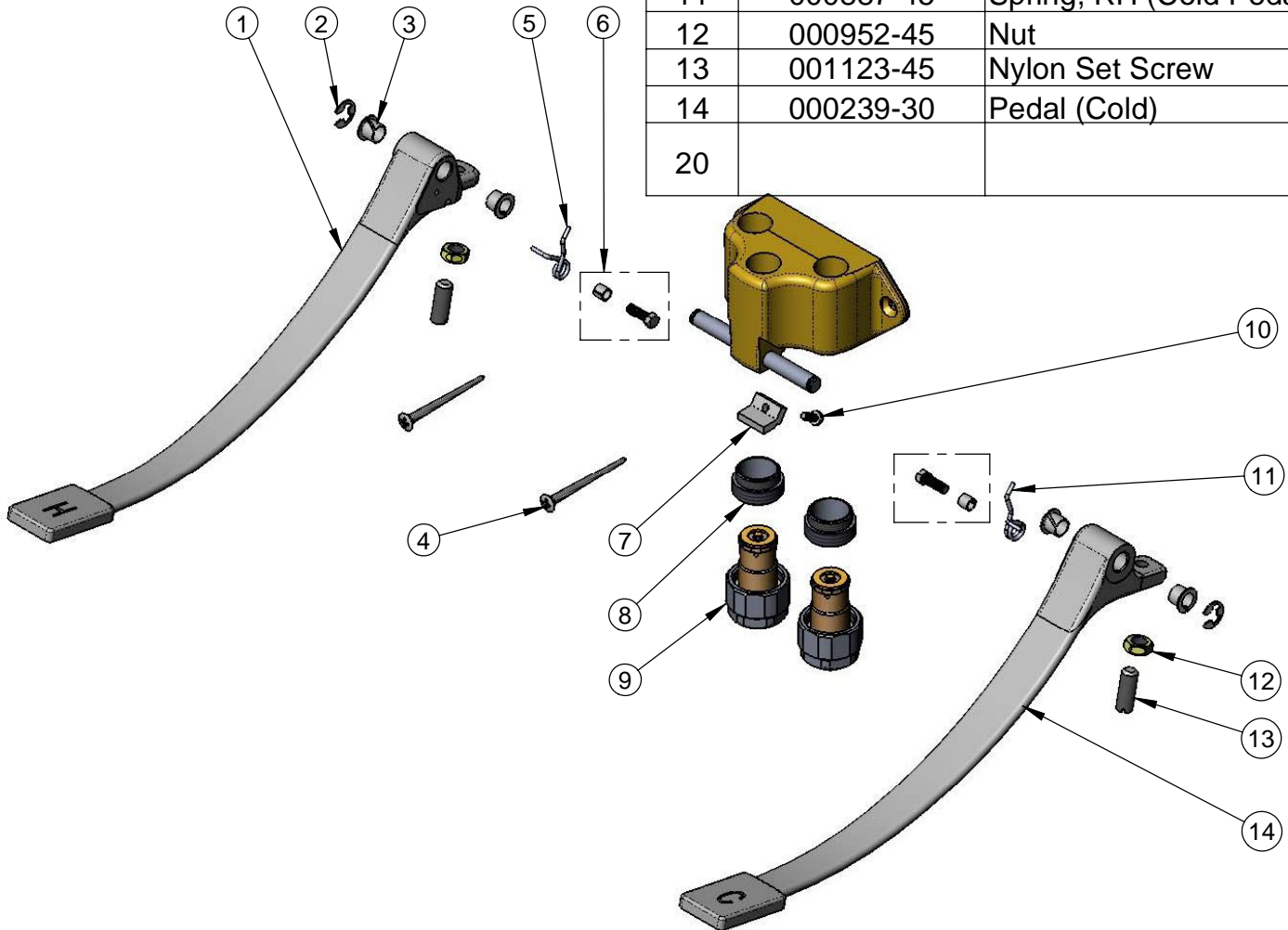
Model No.

B-0504-SL

Item No.

Travelers Rest, SC: 800-476-4103 Simi Valley, CA: 800-423-0150 Fax: 864-834-3518 www.tsbrass.com

| ITEM NO. | SALES NO. | DESCRIPTION |
|----------|-----------|------------------------------|
| 1 | 000240-30 | Pedal (Hot) |
| 2 | 012512-45 | Retaining Ring |
| 3 | 001602-45 | Bushing, Pedal Valve |
| 4 | 003749-45 | Foot Pedal Mtg. Screw |
| 5 | 000886-45 | Spring, LH (Hot Pedal) |
| 6 | 001483-25 | Screw & Spacer, Pedal Spring |
| 7 | 012513-10 | Pad |
| 8 | 011320-25 | Adapter |
| 9 | 011406-40 | Metering Assembly |
| 10 | 012523-45 | Screw |
| 11 | 000887-45 | Spring, RH (Cold Pedal) |
| 12 | 000952-45 | Nut |
| 13 | 001123-45 | Nylon Set Screw |
| 14 | 000239-30 | Pedal (Cold) |
| 20 | | |



Product Specifications:

Double Pedal Valve w/ Metering Cartridges

Drawn

DHL

Checked

JRM

Approved

JHB

Scale:

NTS

Date:

01/28/09