



T&S BRASS AND BRONZE WORKS, INC.
 2 Saddleback Cove / P.O. Box 1088
 Travelers Rest, SC 29690



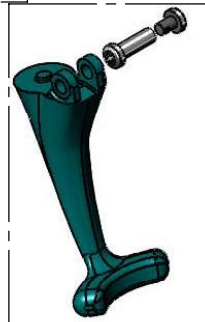
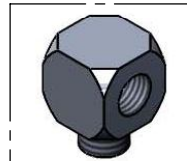
REG. #A2601
 ISO #9001

Model No.
B-1215

Item No.

Travelers Rest, SC: 800-476-4103 Simi Valley, CA: 800-423-0150 Fax: 864-834-3518 www.tsbrass.com

| ITEM NO. | SALES NO. | DESCRIPTION |
|----------|-----------|-----------------------------------|
| 1 | 015588-40 | Adjustable Outlet w/ Torx Wrench |
| 2 | 015589-40 | Valve Assembly |
| 3 | 015550-45 | Lever Arm Repair Kit |
| 4 | 016783-40 | Adjustable Deck Flange Repair Kit |
| 5 | 007009-40 | Pedestal Assembly |
| 6 | 000425-40 | 8" B-1215 Pedestal |



Product Specifications:

8" Pedestal Type Double Glass Filler, Push Back Design, 1/2" NPT Male Shank, Adjustable Flange, Blue Self-Closing Lexan Arm

| | | |
|----------------------|-----------------------|--------------------------|
| Drawn JRM | Checked GEF | Approved JHB |
| Scale: 1:2 | | Date: 10/21/09 |