

PARTS LIST

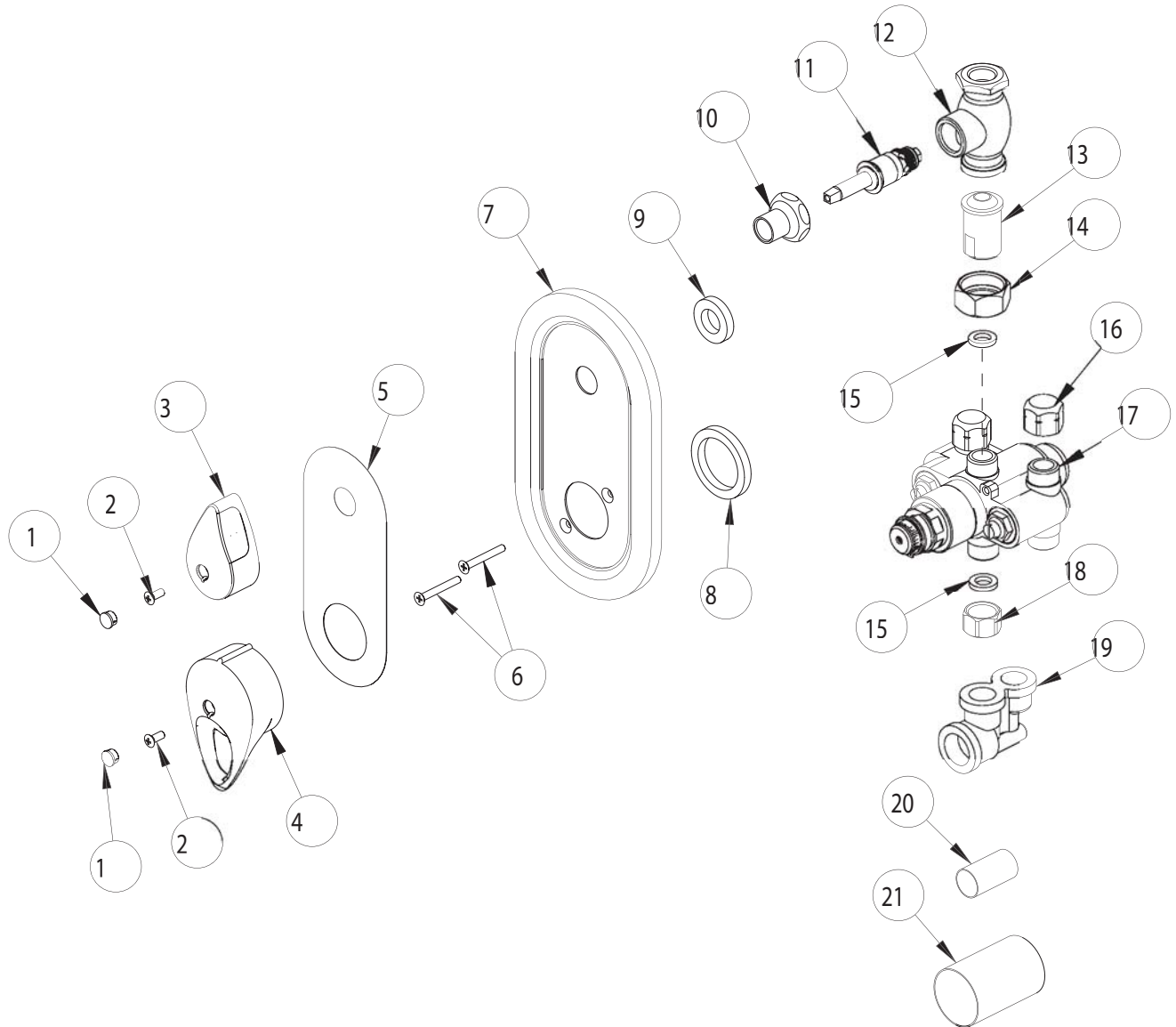
BY: SID
CHK'D:



FINISH:
DATE:

AS SPECIFIED
03-12-02

2500-VOC



ITEM NO.	PART NO.	DESCRIPTION	ITEM NO.	PART NO.	DESCRIPTION
1	2500-005	HANDLE BUTTON	12	----	BODY (NOT SOLD SEPARATELY)
2	420-010	SCREW	13	2500-006	ADAPTER
3	2500-004	SMALL HANDLE	14	2500-008	NUT, COUPLING
4	2500-003	LARGE HANDLE	15	2500-007	FIBER WASHER
5	2500-020	DECAL	16	2500-012	CAP NUT
6	2500-015	SCREW	17	----	VALVE BODY (NOT SOLD SEPARATELY)
7	2500-002	ESCUTCHEON	18	2500-011	CAP NUT
8	2500-009	LARGE SEAL	19	2500-017	TWIN ELL
9	2500-010	SMALL SEAL	20	2500-018	TUBE-SMALL
10	1-246	LOOSE KEY CAP	21	2500-019	TUBE-LARGE
11	377XTRH	RH QUATURN CARTRIDGE			