

CHICAGO FAUCETS

a Geberit company



2100 SOUTH CLEARWATER DRIVE
DES PLAINES, ILLINOIS 60018-5999

FITTING NO.

9205

SUBMITTED MODEL NO.

JOB NAME

ITEM NO.

SUBMITTED AS SHOWN

SUBMITTED AS NOTED

SEE ATTACHED FOR
SUBMITTED MODIFICATION

NOTES:

- 1) DIMENSIONS MAY VARY $\pm 1/2"$ [12.7mm].
- 2) A FLOOR DRAIN SHOULD BE PROVIDED FOR THIS PRODUCT.

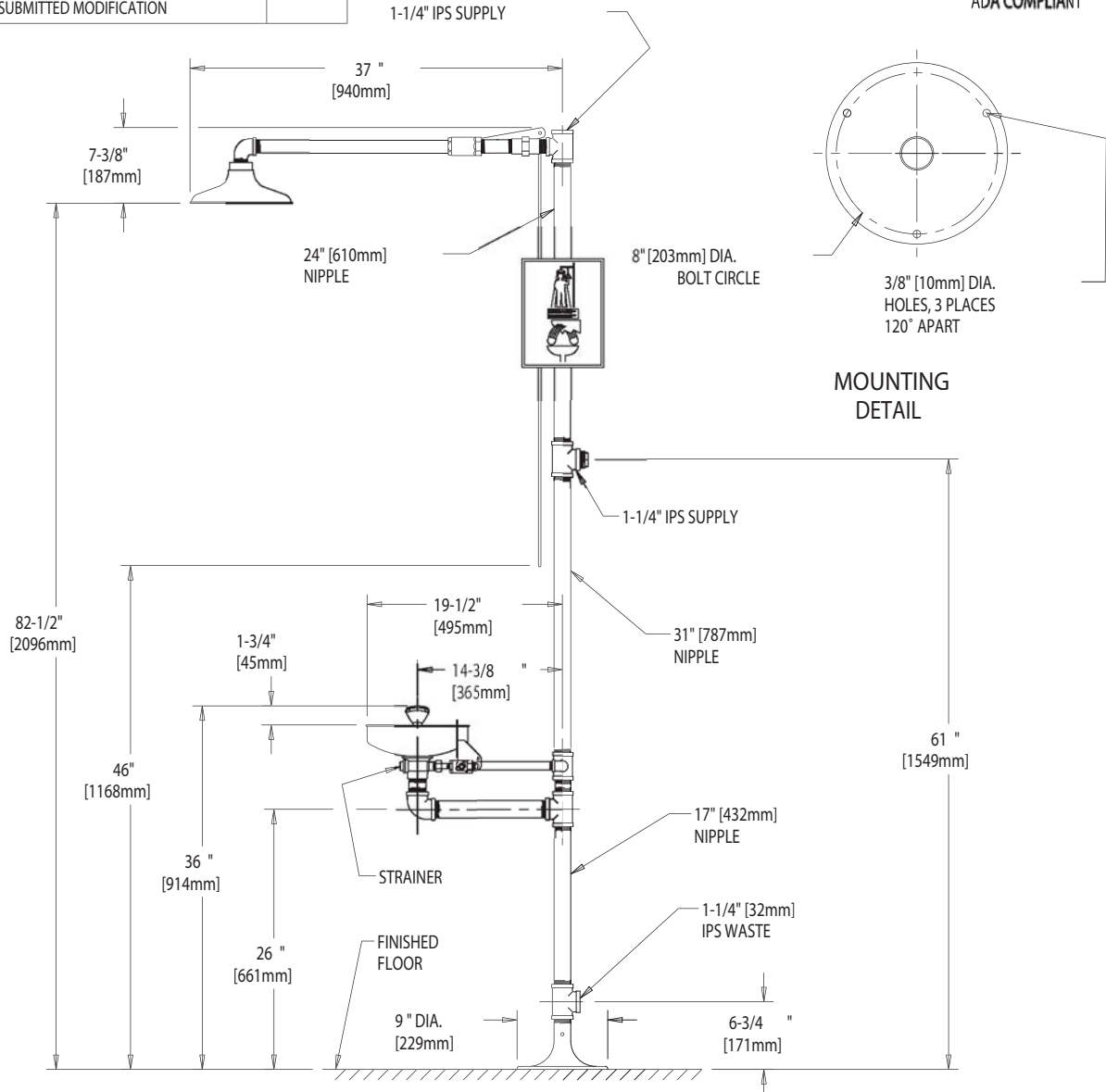


ADA COMPLIANT

1-1/4" IPS SUPPLY

IS ASSUMED FOR USE OF SUPERCEDED OR VOIDED DATA.

ROUGHING IN DIMENSIONS MAY VARY AND ARE SUBJECT TO CHANGE. NO RESPONSIBILITY



DIMENSIONS IN INCHES AND [MILLIMETERS].

TECHNICAL DATA

- COMBINATION EYE/FACE WASH AND SAFETY DRENCH SHOWER WITH WHEEL CHAIR ACCESS
- INSTANT ACTION PUSH TO OPERATE BALL VALVE THAT STAYS OPEN UNTIL MANUALLY CLOSED
- DUAL HIGH IMPACT ABS PLASTIC SPRAY HEADS IN HIGH VISIBILITY YELLOW
- INTEGRAL DUST COVERS FOR SPRAY HEADS THAT RELEASE WHEN VALVE IS ACTIVATED

- STAINLESS STEEL BOWL
- ABS PLASTIC SHOWER HEAD IN HIGH VISIBILITY YELLOW
- INSTANT ACTION PULL TO OPERATE MANUAL BALL VALVE FOR SHOWER
- HIGH VISIBILITY EMERGENCY SIGN
- MEETS ANSI STANDARD Z358.1
- FINISH: NO FINISH

DATE: 4-12-02

BY: JAR

CHK'D:

APP'D:

REV: A

9205