

Eye/Face Wash Fixture w/ Wall Bracket

Model S19-220H (Shown)

Model S19-220K

Model S19-220SS

- Complies with American National Standard Z358.1-2004
- Galvanized Steel Protected with BRADTECT™ Safety Yellow Coating or all Stainless Steel
- Universal Identification Sign and Inspection Tag Included
- Full, One-Year Warranty



Specifications

Unit design saves space and fits easily into any work environment. Eyewash operates quickly by a large, highly visible push handle. Safe, steady water flow under varying water supply conditions from 30-90 PSI is assured by integral flow control in the sprayhead assembly.

UPC and cUPC Approved:

The Emergency Fixtures are certified to comply with the requirements of the Uniform Plumbing Code and the National Plumbing Code of Canada by the International Association of Plumbing and Mechanical Officials (IAPMO).

Construction

Impact-resistant plastic eyewash bowl is colored bright yellow for high visibility in emergency situations or is corrosion resistant stainless steel. Galvanized steel piping and wall mounting bracket are additionally protected with BRADTECT™ safety yellow coating. Chrome plated tailpiece provided. S19-220SS is all stainless steel construction.

Standard Equipment

Eyewash Bowl

10" (254mm) diameter yellow impact-resistant plastic or stainless steel.

Standard Sprayhead Assembly

Chrome-plated brass sprayhead assembly with twin, soft flow, eyewash heads and protective sprayhead covers. The integral flow control assures safe, steady flow under varying water supply conditions from 30-90 PSI. S19-220SS is all stainless steel construction.

Face Spray Ring

Chrome-plated circular spray ring provides supplemental face spray. Flow control assures adequate flow from eyewash nozzles and face spray ring from 30-90 PSI. S19-220SS is all stainless steel construction.

Valve

Chrome-plated brass 1/2" IPS stay-open ball valve. Hand operated by a large, highly visible safety yellow PVC push handle. S19-220SS is all stainless steel construction.

Pipe and Fittings

1/2" galvanized steel protected with BRADTECT™ safety yellow coating. S19-220SS is all stainless steel construction.

Wall Bracket

Heavy-gauge sand cast aluminum protected with BRADTECT™ safety yellow coating. Three clearance holes for wall mounting bracket; bolts by others. S19-220SS is all stainless steel construction.

Waste

1-1/4" drain fitting and tailpiece furnished.

Water Supply

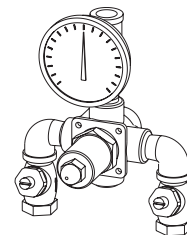
1/2" IPS.

Document No. 4320

Recommended Option:

Navigator S19-2000 EFX8
Emergency Thermostatic Mixing Valve

NAVIGATOR



Satisfies ANSI Z358.1-2004
tepid water requirements.

Bradley 

P.O. Box 309, Menomonee Falls, WI 53052-0309
Phone 1-800-BRADLEY FAX 262-251-5817
Web Site: <http://www.bradleycorp.com>



SEI CERTIFIED
MODEL
Z358.1-2004

**PLUMBING FIXTURES
TECHNICAL DATA**

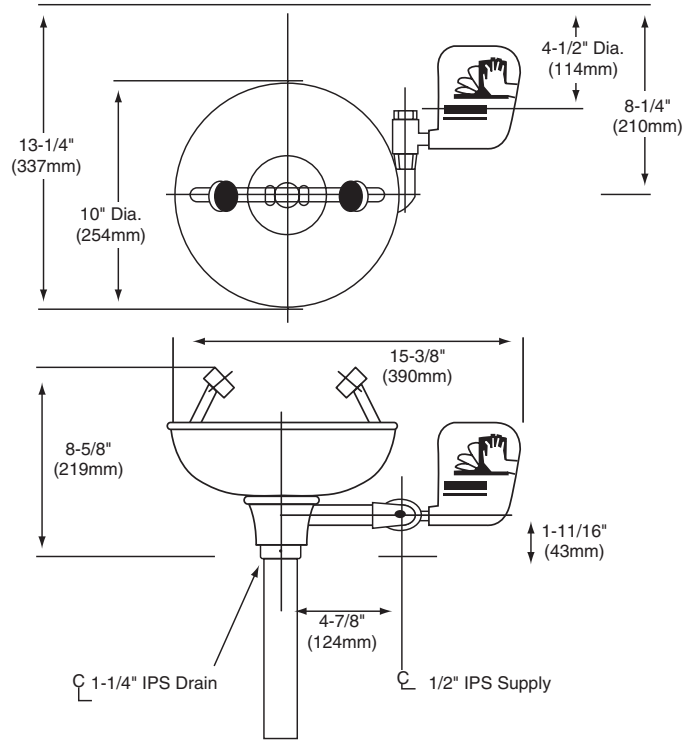
Eye/Face Wash Fixture w/ Wall Bracket

Model S19-220H (Shown)

Model S19-220K

Model S19-220SS

MODEL	
Model No.	Description
<input type="checkbox"/> S19-220H	Eye/Face Wash Fixture w/ Wall Bracket- Plastic Bowl
<input type="checkbox"/> S19-220K	Eye/Face Wash Fixture w/ Wall Bracket- Stainless Steel Bowl
<input type="checkbox"/> S19-220SS	Eye/Face Wash Fixture w/ Wall Bracket- All Stainless Steel Fixture
<input type="checkbox"/> S19-2000	Navigator EFX8 – Emergency Thermostatic Mixing Valve



Document No. 4320

This information is subject to change without formal notice.
© 2006 Bradley Corporation
10-11-2006 (2 Pages Total)

EF4320.2



P.O. Box 309, Menomonee Falls, WI 53052-0309
Phone 1-800-BRADLEY FAX 262-251-5817
Web Site: <http://www.bradleycorp.com>