

# Eye/Face Wash Fixture w/ No Wall Bracket

## Model S19-230H

## Model S19-230K (Shown)

- Complies with American National Standard Z358.1-2004
- Galvanized Piping Protected with BRADTECT™ Safety Yellow Coating
- Universal Identification Sign and Inspection Tag Included
- Full, One-Year Warranty



## Specifications

Unit design saves space and fits easily into any work environment. Eyewash operates quickly by a large, highly visible push handle. Safe, steady water flow under varying water supply conditions from 30-90 PSI is assured by integral flow control in the sprayhead assembly.

### UPC and cUPC Approved:

The Emergency Fixtures are certified to comply with the requirements of the Uniform Plumbing Code and the National Plumbing Code of Canada by the International Association of Plumbing and Mechanical Officials (IAPMO).

## Construction

Impact-resistant plastic eyewash bowl is colored bright yellow for high visibility in emergency situations or is corrosion resistant stainless steel. Galvanized steel piping is additionally protected with BRADTECT™ safety yellow coating. Chrome plated tailpiece provided.

## Standard Equipment

### Eyewash Bowl

10" (254mm) diameter yellow impact resistant plastic or stainless steel.

### Standard Sprayhead Assembly

Chrome-plated brass sprayhead assembly with twin, soft flow, eyewash heads and protective sprayhead covers. The integral flow control assures safe, steady flow under varying water supply conditions from 30-90 PSI.

### Face Spray Ring

Chrome-plated circular spray ring provides supplemental face spray. Flow control assures adequate flow from eyewash nozzles and face spray ring from 30-90 PSI.

### Valve

Chrome-plated brass 1/2" IPS stay-open ball valve. Hand operated by a large, highly visible safety yellow PVC push handle.

### Pipe and Fittings

1/2" galvanized steel protected with BRADTECT™ safety yellow coating.

### Waste

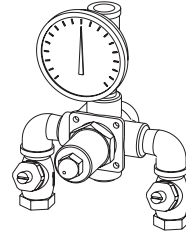
1-1/4" drain fitting and tailpiece furnished.

### Water Supply

1/2" IPS.

**Recommended Option:**  
Navigator S19-2000 EFX8  
Emergency Thermostatic Mixing Valve

**NAVIGATOR**



Satisfies ANSI Z358.1-2004  
tepid water requirements.

Document No. 4430

This information is subject to change without formal notice.  
© 2006 Bradley Corporation  
10-11-2006 (2 Pages Total)

**Bradley** 

P.O. Box 309, Menomonee Falls, WI 53052-0309  
Phone 1-800-BRADLEY FAX 262-251-5817  
Web Site: <http://www.bradleycorp.com>



**SEI** CERTIFIED  
MODEL  
Z358.1-2004

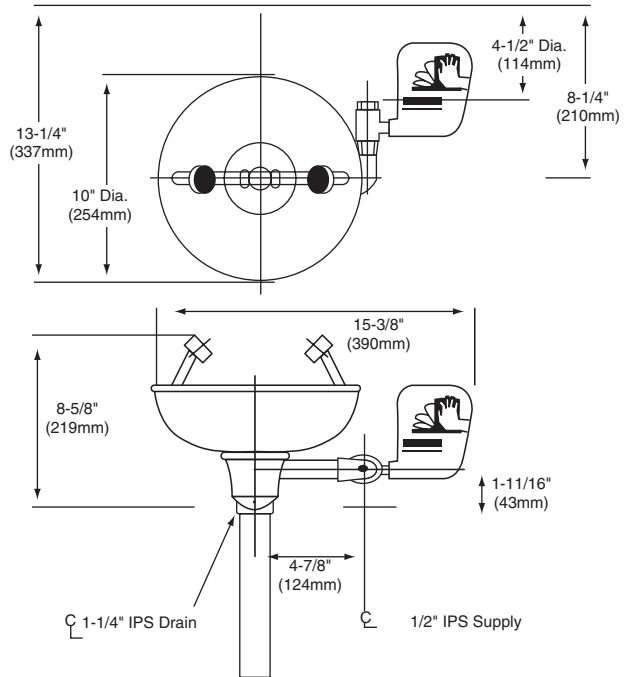
**PLUMBING FIXTURES  
TECHNICAL DATA**

# Eye/Face Wash Fixture w/ No Wall Bracket

## Model S19-230H

## Model S19-230K (Shown)

MODEL	
Model No.	Description
<input type="checkbox"/> S19-230H	Eye/Face Wash Fixture w/ No Wall Bracket-Plastic Bowl
<input type="checkbox"/> S19-230K	Eye/Face Wash Fixture w/ No Wall Bracket-Stainless Steel Bowl
<input type="checkbox"/> S19-2000	Navigator EFX8 – Emergency Thermostatic Mixing Valve



Document No. 4430

This information is subject to change without formal notice.  
© 2006 Bradley Corporation  
10-11-2006 (2 Pages Total)



P.O. Box 309, Menomonee Falls, WI 53052-0309  
Phone 1-800-BRADLEY FAX 262-251-5817  
Web Site: <http://www.bradleycorp.com>