

# Explosion-Proof Flow Switch Alarm System

## Models S19-320EXP, S19-320EXP220, S19-320EXP1A, S19-320EXP1B

- Automatic, Audible and Visual System
- Class I, Division II Groups B, C, D Explosion-Proof (S19-EXP120, S19-EXP220)
- Class I, Division I Groups C & D Explosion-Proof (S19-EXP1A, S19-EXP1B)
- Designed to meet NEMA No. 4 Code
- Easily Connected to Other Emergency Fixture Units
- Full, One-Year Warranty

### Specifications

System can be easily connected to most combination drench shower/eye wash or drench shower units which have 1-1/4" inlet piping and a 30 GPM water inlet source. Strobe light and flow switch are U.L. listed and CSA approved components. The alarm horn is a U.L. listed component. System is fully grounded and electrically insulated from water piping for safety. Remote location hookup possible by using the contacts in the flow switch junction box.

### Construction

Horn sounds 100 decibels at 10 feet away (123 decibels at 1 foot). Strobe light has effective candlepower of 240 candelas and 580,000 peak candlepower. Voltage is AC, 120 volts on S19-320EXP120 and S19-320EXP1A, 220 volts on S19-320EXP220 and S19-320EXP1B, 50/60 hz, single phase. Flow switch is AC 120/240V, 5 amps, double pole, double throw. Prewired cable for electrical connection. Pipe size is 1-1/4" IPS supply.

### Standard Equipment

#### Horn Sound

100 decibels at 10 feet (123 decibels at 1 foot). Designed to sound away from the injured person.

#### On/Off Switch

The horn can be turned off while the strobe light continues to flash and the water flows.

#### Strobe Light

Effective candlepower of 240 candelas and 580,000 peak candlepower. Safety amber-colored glass. Dust cover. All solid state components with no moving parts for maintenance-free operation.

#### Voltage

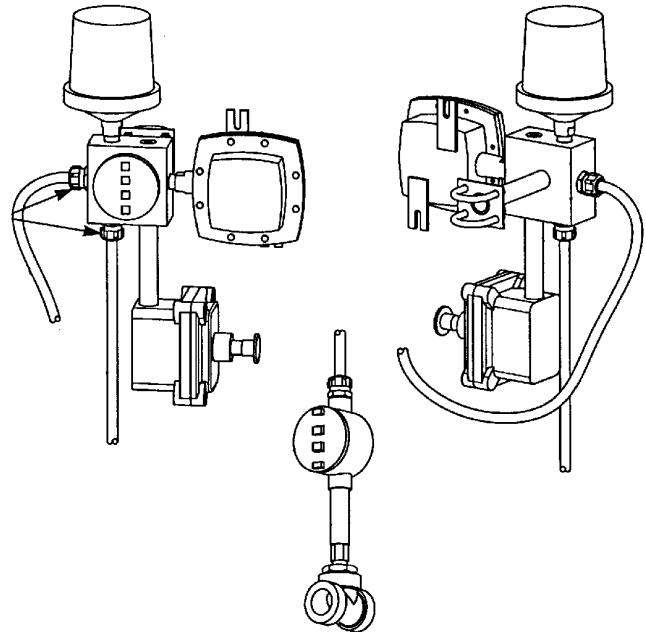
AC, 120 volts (S19-320EXP120, S19-320EXP1A) or 220 volts (S19-320EXP220 and S19-320EXP1B), 50/60 hz, single phase. System is fully grounded and electrically insulated from water piping for safety. Draws 1/2 amp.

#### Flow Switch Assembly

Watertight and completely assembled for easy hookup to alarm assembly.

#### Flow Switch

AC, 120/240V, 5 amps, double pole, double throw.



#### Electrical Connection

Waterproof, explosion-proof cable and connectors provided for easy connection to the alarm assembly.

#### Remote Wiring

Remote location hookup possible by using the contacts in the flow switch junction box.

#### Pipe Size

1-1/4" IPS supply.

MODEL	
Model No.	Description
<input type="checkbox"/> S19-320EXP120	Explosion-Proof Shower Alarm System (Class I, Division II, Groups B, C & D, 120V)
<input type="checkbox"/> S19-320EXP220	Explosion-Proof Shower Alarm System (Class I, Division II, Groups B, C & D, 220V)
<input type="checkbox"/> S19-320EXP1A	Explosion-Proof Shower Alarm System (Class I, Division I, Groups C & D, 120V)
<input type="checkbox"/> S19-320EXP1B	Explosion-Proof Shower Alarm System (Class I, Division I, Groups C & D, 220V)

Document No. 4695

This information is subject to change without formal notice.  
© 2007 Bradley Corporation  
3-22-2007 (1 Page Total)

EF4695.1

**Bradley** 

P.O. Box 309, Menomonee Falls, WI 53052-0309  
Phone 1-800-BRADLEY FAX 262-251-5817  
Web Site: <http://www.bradleycorp.com>