



- G1641** Emergency Shower with Drench Hose, Horizontally Mounted, Plastic Shower Head
- G1641SSH** Emergency Shower with Drench Hose, Horizontally Mounted, Stainless Steel Shower Head



APPLICATION: Emergency shower for horizontal mounting with auxiliary hand-held drench hose unit.

SHOWER HEAD: 10" diameter. Shower head is orange ABS plastic (G1641) or stainless steel (G1641SSH).

VALVE: 1" IPS chrome plated brass stay-open ball valve. Valve is US-made with chrome plated brass ball and Teflon® seals. Furnished with stainless steel actuating arm and 29" stainless steel pull rod.

DRENCH HOSE UNIT: Auxiliary hand-held drench hose for rinsing eyes, face or body. Unit has single FS-Plus™ spray type outlet head, self-closing valve with squeeze handle, 8 ft. reinforced PVC hose and wall hook.

PIPE AND FITTINGS: 1" IPS galvanized steel with orange ABS plastic elbow (G1641) or galvanized steel elbow (G1641SSH).

SUPPLY: 1" NPT female inlet.

SIGN: ANSI-compliant identification sign.

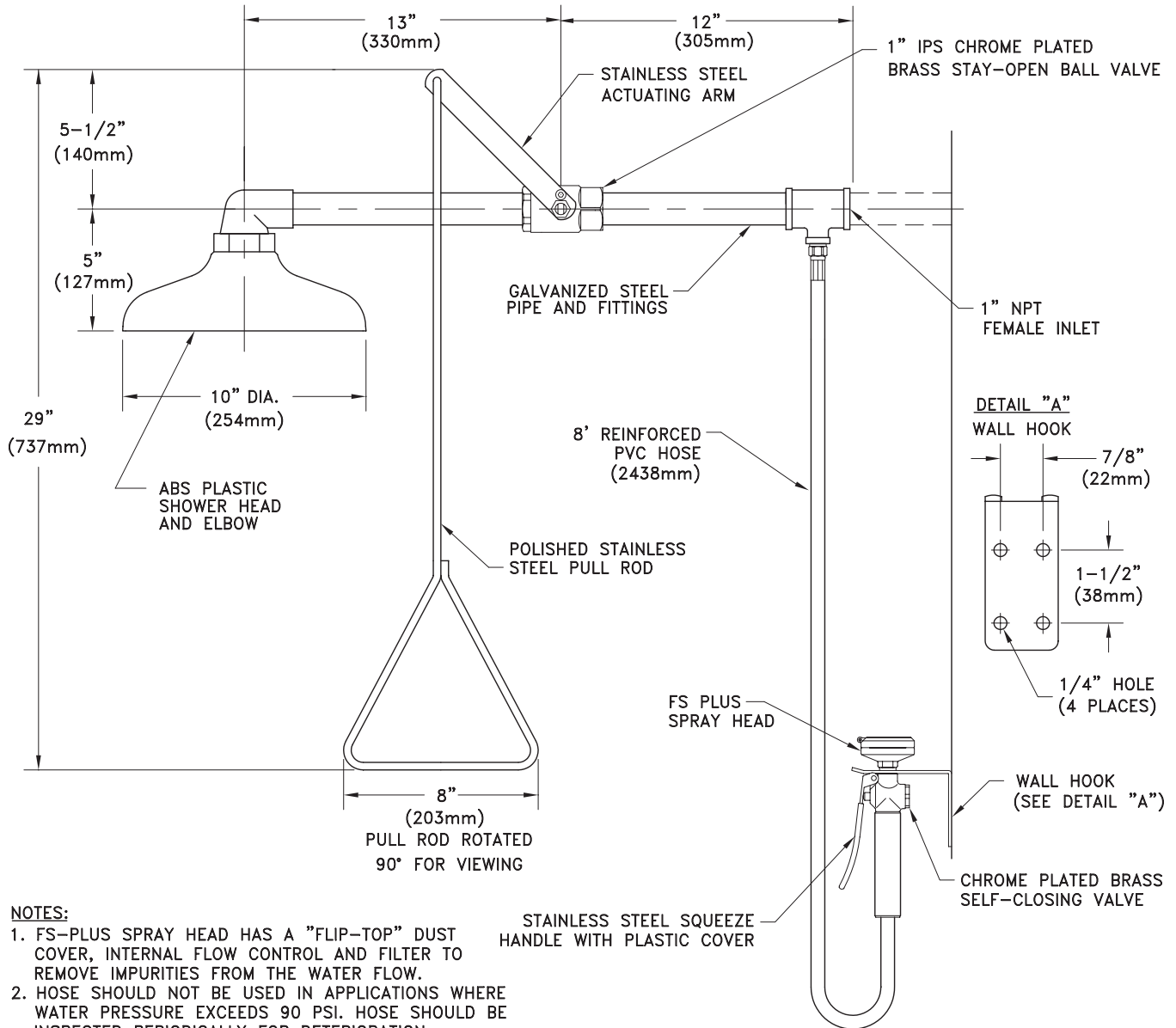
Available Options

- PCC** All-polished chrome plated brass construction.
- GRN** Safety green ABS plastic shower head.
- YEL** Safety yellow ABS plastic shower head.
- PCH** Polished chrome plated cast brass shower head.
- FC20** Regulates shower flow rate to 20 GPM.
- SC** Self-closing ball valve. *Note: Emergency showers with self-closing valves do not comply with ANSI Z358.1 - 2004.*
- AP280-100 ELECTRIC LIGHT AND ALARM HORN**
Flashing light and horn serve to summon assistance when shower is activated.
- TMV** G3800 thermostatic mixing valve precisely blends hot and cold water to deliver warm (tepid) water as required by ANSI Z358.1-2004. Refer to "Tempering Units" section for complete technical and product selection information.
- AP250-015 MODESTY CURTAIN**
Modesty curtain for horizontal shower installation.





- **G1641** Emergency Shower with Drench Hose, Horizontally Mounted, Plastic Shower Head
- **G1641SSH** Emergency Shower with Drench Hose, Horizontally Mounted, Stainless Steel Shower Head



NOTES:

1. FS-PLUS SPRAY HEAD HAS A "FLIP-TOP" DUST COVER, INTERNAL FLOW CONTROL AND FILTER TO REMOVE IMPURITIES FROM THE WATER FLOW.
2. HOSE SHOULD NOT BE USED IN APPLICATIONS WHERE WATER PRESSURE EXCEEDS 90 PSI. HOSE SHOULD BE INSPECTED PERIODICALLY FOR DETERIORATION.

THIS SPACE FOR ARCHITECT/ENGINEER APPROVAL

Due to continuing product improvement, the information contained in this document is subject to change without notice. All dimensions are ± 1/4" (6mm). rev. 0308

Sign Included

