



- GFR1902** Freeze-Resistant Safety Station with Eyewash, Plastic Shower Head
- GFR1902SSH** Freeze-Resistant Safety Station with Eyewash, Stainless Steel Shower Head

APPLICATION: Freeze-resistant combination eyewash and shower safety station. Freeze-resistant valves and supply lines are buried below frost line to protect against freezing. Unit is designed to drain completely after use, so that no standing water remains in unit and possibility of freeze-up is eliminated. Since unit is intended for use in cold weather conditions, consideration should be given to supplying unit with tempered water in accordance with ANSI Z358.1-2004. See “Tempering Units” section for more information.

SHOWER HEAD: 10" diameter. Shower head is orange ABS plastic (GFR1902) or stainless steel (GFR1902SSH).

SHOWER VALVE: 1 1/4" IPS freeze-resistant valve with push plate. Valve body and supply line are buried below frost line to prevent freezing. Valve has 1/4" IPS bleed outlet to permit water standing in unit to drain out after use. Specify bury depth of valve when ordering.

SPRAY HEAD ASSEMBLY: Two GS-Plus™ spray heads. Each spray head has a “flip top” dust cover and internal flow control.

EYEWASH BOWL: 11 1/2" diameter stainless steel.

EYEWASH VALVE: 3/4" IPS freeze-resistant valve with push plate. Valve body and supply line are buried below frost line to prevent freezing. Valve has 1/4" IPS bleed outlet to permit water standing in unit to drain out after use. Specify bury depth of valve when ordering.

PIPE AND FITTINGS: Schedule 40 galvanized steel. Furnished with orange polyethylene covers for vertical piping for high visibility and corrosion resistance.

SUPPLY: 3/4" NPT (eyewash valve) and 1 1/4" NPT (shower valve) male inlets.

WASTE: 1 1/4" NPT female outlet.

SIGN: Furnished with ANSI-compliant identification sign.

QUALITY ASSURANCE: Valve and spray head assemblies are factory assembled and water tested prior to shipment.

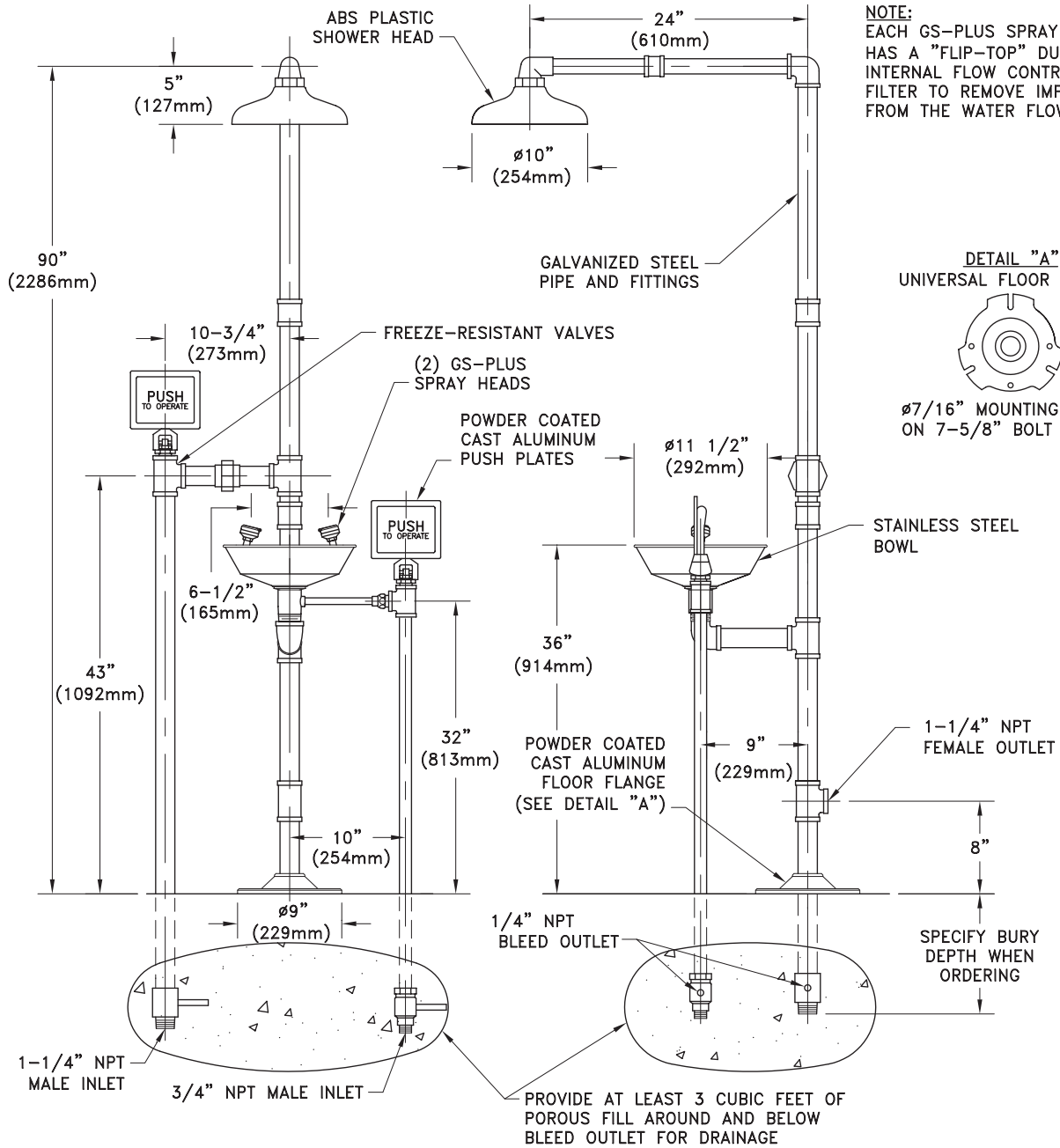
Available Options

- FC20** Regulates shower flow rate to 20 GPM.
- GRN** Green ABS plastic shower head.
- YEL** Yellow ABS plastic shower head.
- AP250-015 MODESTY CURTAIN**
Modesty curtain for mounting on safety station.





- GFR1902** Freeze-Resistant Safety Station with Eyewash, Plastic Shower Head
- GFR1902SSH** Freeze-Resistant Safety Station with Eyewash, Stainless Steel Shower Head



NOTE:
 EACH GS-PLUS SPRAY HEAD HAS A "FLIP-TOP" DUST COVER, INTERNAL FLOW CONTROL AND FILTER TO REMOVE IMPURITIES FROM THE WATER FLOW.

THIS SPACE FOR ARCHITECT/ENGINEER APPROVAL

Due to continuing product improvement, the information contained in this document is subject to change without notice. All dimensions are ± 1/4" (6mm). rev. 0308

Sign Included

