

# SPEAKMAN®

## AL3-C1D2 ALARM SYSTEM

### DESCRIPTION

Emergency equipment alarm with electric horn and rotating light activated by a vapor proof flow switch. Unit is also equipped with a silencing toggle switch. Alarm unit meets indoor / outdoor hazardous location requirements for Class 1, Division 2 Groups C, D electrical classification.

### SPECIFICATIONS

**Activator:** 3/4" Vapor Proof Flow Switch

**Horn:** 100dB @ 10 Ft.

**Light:** 25 watt incandescent bulb

**Shipping Weight:** 21 lb.

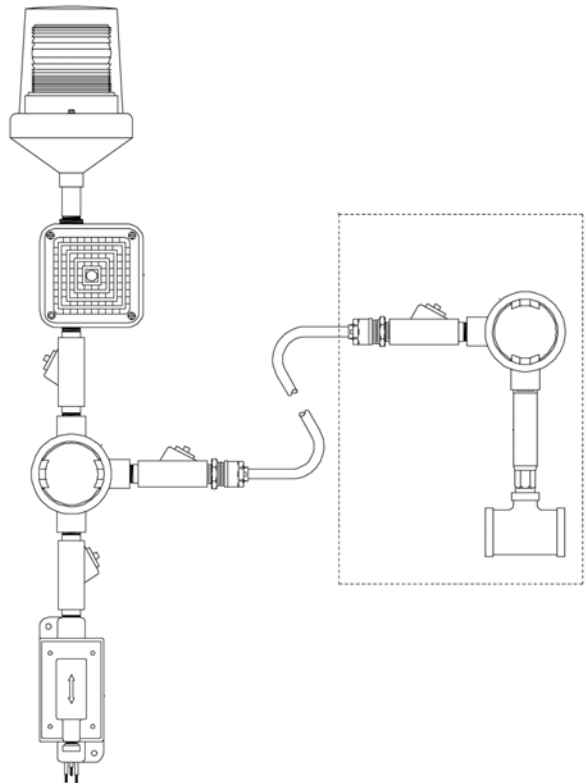
### Electrical Data:

Electrical Supply: 120 VAC, 60 Cycle, Single Phase.

Electrical rating: 5.5 Amps @ 120 VAC.

**Compliance:** Unit rated for NEMA 4 indoor/outdoor hazardous locations (Cl. 1, Div. 2, Groups C,D).

\*Power supply to be in compliance with (N.E.C.) National Electric Code.



### OPTIONS

- DPDT Double pole, double throw flow switch for remote locations
- Blue Dome
- Red Dome
- Clear Dome
- Green Dome

Job Name _____
Location _____
Architect/Engineer _____
Sales Representative _____
Wholesaler _____
Date _____ Model # _____