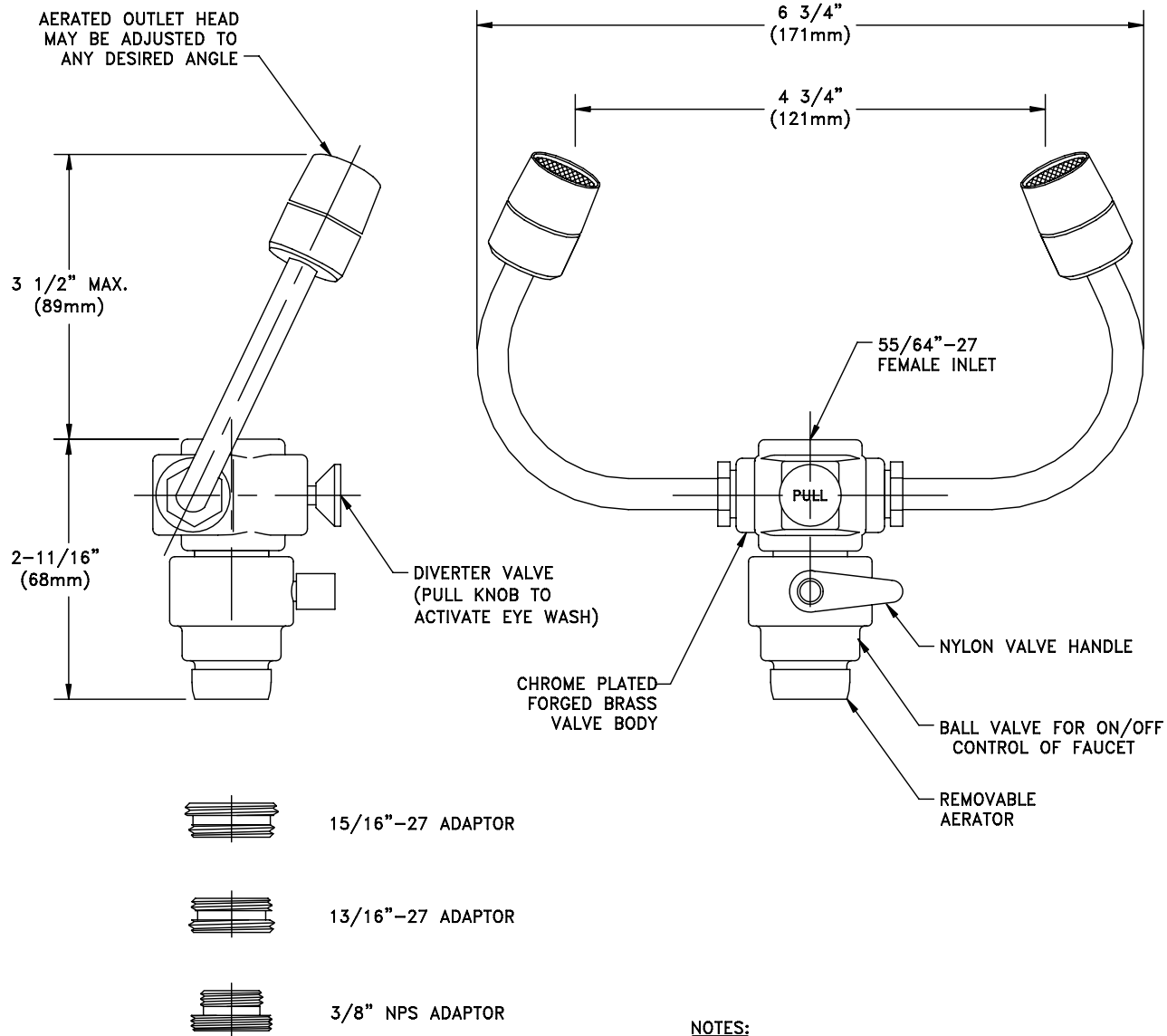


G1201
EYESAFE-X FAUCET-MOUNTED EYE WASH, ADJUSTABLE AERATED OUTLET HEADS,
ON/OFF BALL VALVE ON OUTLET



NOTES:
1. USE COLD OR WARM WATER ONLY WITH FAUCET-MOUNTED EYE WASH.

UNITS (EXCEPT THOSE WITH SELF-CLOSING VALVES) COMPLY WITH THE REQUIREMENTS OF ANSI Z358.1. TEST ALL EMERGENCY EQUIPMENT AT LEAST WEEKLY.