



# T&S BRASS AND BRONZE WORKS, INC.

2 Saddleback Cove / P.O. Box 1088  
Travelers Rest, SC 29690



REG. #A2601  
ISO #9001

Model No.

**B-0113-A-08 SERIES**

Item No.

Travelers Rest, SC: 800-476-4103 Simi Valley, CA: 800-423-0150 Fax: 864-834-3518 www.tsbrass.com

This Space for Architect/Engineer Approval

Job Name \_\_\_\_\_ Date \_\_\_\_\_

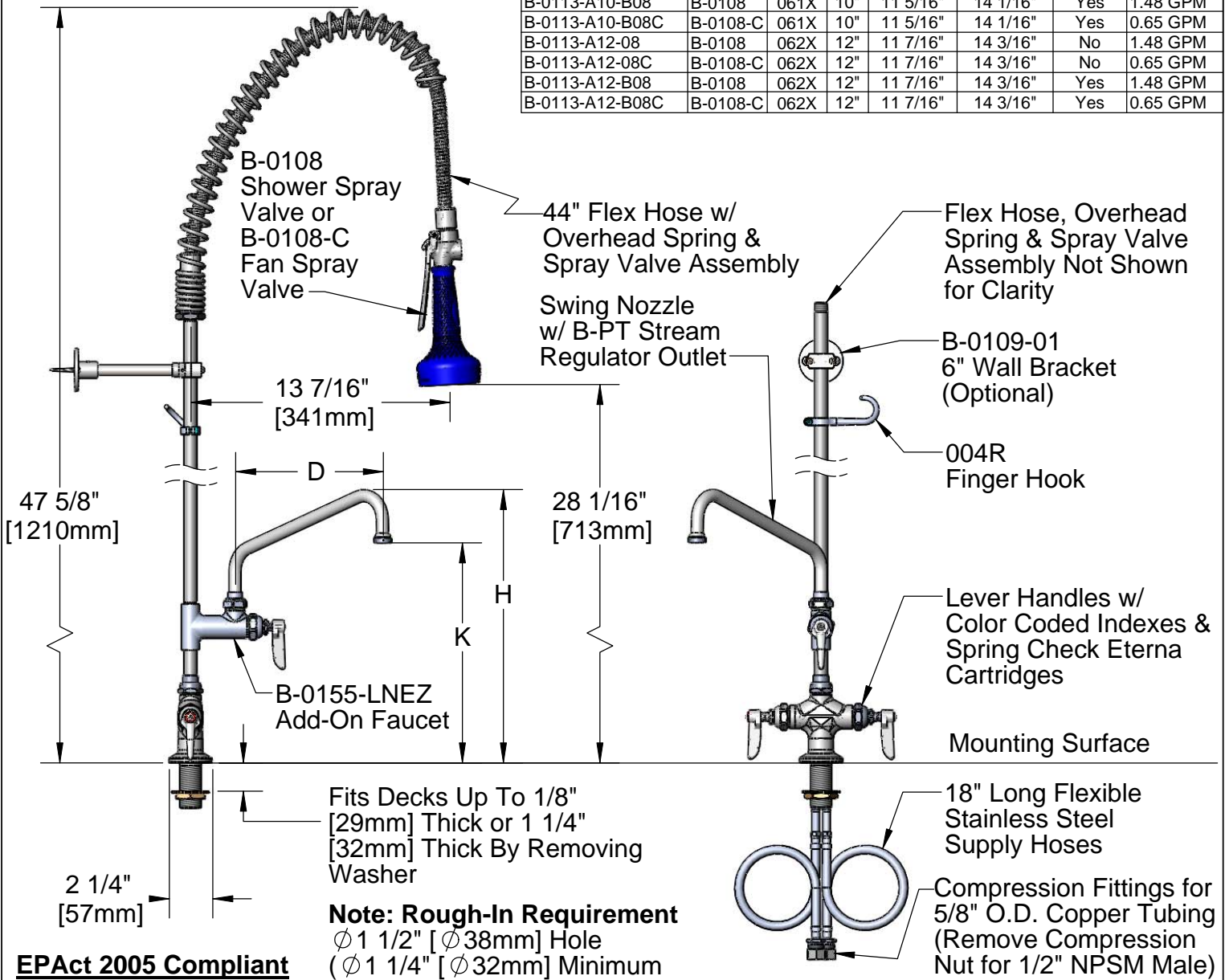
Model Specified \_\_\_\_\_ Quantity \_\_\_\_\_

Customer/Wholesaler \_\_\_\_\_

Contractor \_\_\_\_\_

Architect/Engineer \_\_\_\_\_

Model	Spray Valve	Swing Nozzle	D	K	H	6" Wall Bracket	Flow Rate
B-0113-A06-08	B-0108	059X	6"	10 1/16"	12 13/16"	No	1.48 GPM
B-0113-A06-08C	B-0108-C	059X	6"	10 1/16"	12 13/16"	No	0.65 GPM
B-0113-A06-B08	B-0108	059X	6"	10 1/16"	12 13/16"	Yes	1.48 GPM
B-0113-A06-B08C	B-0108-C	059X	6"	10 1/16"	12 13/16"	Yes	0.65 GPM
B-0113-A08-08	B-0108	060X	8"	10 5/8"	13 3/8"	No	1.48 GPM
B-0113-A08-08C	B-0108-C	060X	8"	10 5/8"	13 3/8"	No	0.65 GPM
B-0113-A08-B08	B-0108	060X	8"	10 5/8"	13 3/8"	Yes	1.48 GPM
B-0113-A08-B08C	B-0108-C	060X	8"	10 5/8"	13 3/8"	Yes	0.65 GPM
B-0113-A10-08	B-0108	061X	10"	11 5/16"	14 1/16"	No	1.48 GPM
B-0113-A10-08C	B-0108-C	061X	10"	11 5/16"	14 1/16"	No	0.65 GPM
B-0113-A10-B08	B-0108	061X	10"	11 5/16"	14 1/16"	Yes	1.48 GPM
B-0113-A10-B08C	B-0108-C	061X	10"	11 5/16"	14 1/16"	Yes	0.65 GPM
B-0113-A12-08	B-0108	062X	12"	11 7/16"	14 3/16"	No	1.48 GPM
B-0113-A12-08C	B-0108-C	062X	12"	11 7/16"	14 3/16"	No	0.65 GPM
B-0113-A12-B08	B-0108	062X	12"	11 7/16"	14 3/16"	Yes	1.48 GPM
B-0113-A12-B08C	B-0108-C	062X	12"	11 7/16"	14 3/16"	Yes	0.65 GPM



**EPAct 2005 Compliant**

Product Specifications:

EasyInstall Pre-Rinse Unit:  
Single Deck Mount Base Mixing Faucet, Flexible Supply Hoses,  
24" Riser, Overhead Spring, 44" Flex Hose, B-0108 / B-0108-C  
Spray Valve & Wall Bracket (Optional)

Drawn JRM	Checked DMH	Approved JHB
Scale: 1:8		Date: 12/04/09



# T&S BRASS AND BRONZE WORKS, INC.

2 Saddleback Cove / P.O. Box 1088  
Travelers Rest, SC 29690



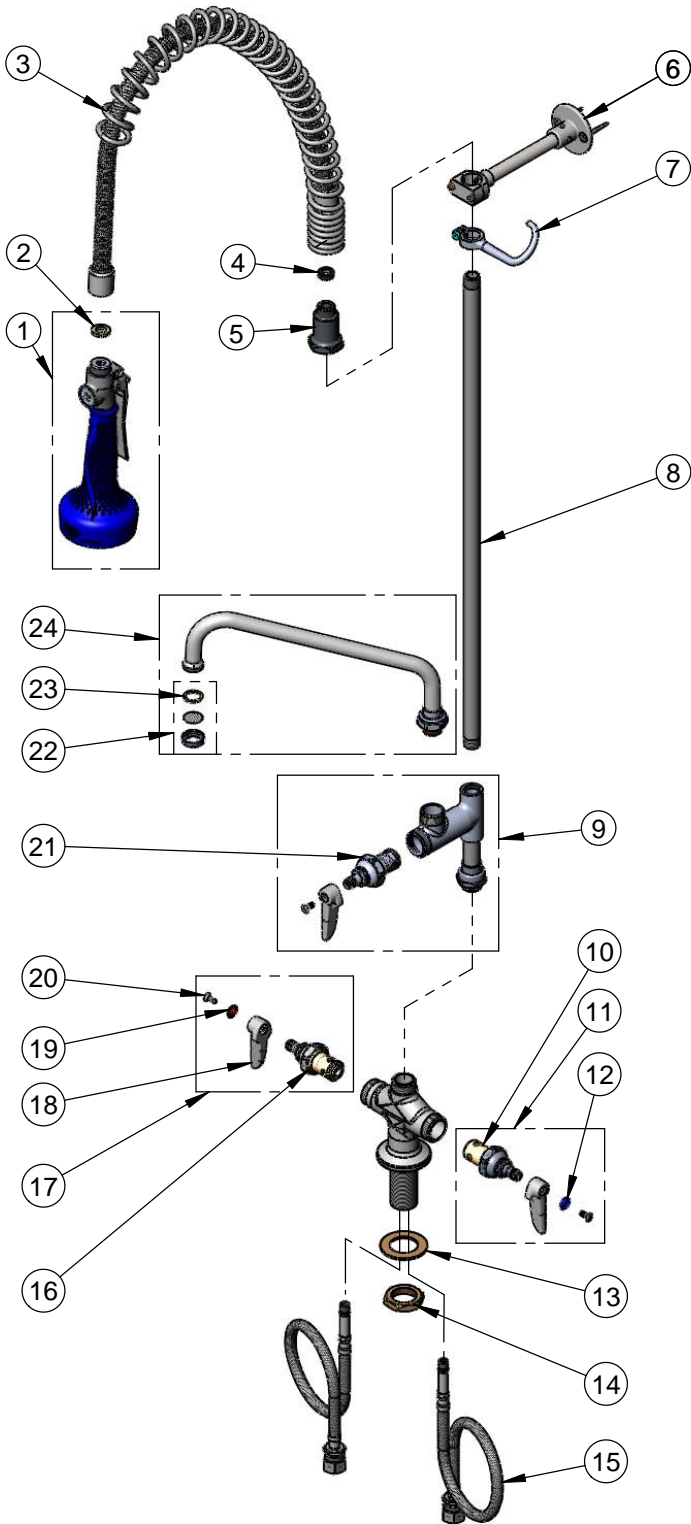
REG. #A2601  
ISO #9001

Model No.

**B-0113-A-08 SERIES**

Item No.

Travelers Rest, SC: 800-476-4103 Simi Valley, CA: 800-423-0150 Fax: 864-834-3518 www.tsbrass.com



ITEM NO.	SALES NO.	DESCRIPTION
1	See Chart	Spray Valve
2	001014-45	Washer, B-0100 Hose Barrel
3	000888-45	EasyInstall Overhead Spring
4	010476-45	#27 Washer
5	000821-40	Spring Body
6	B-0109-01	6" Wall Bracket Assembly
7	004R	Finger Hook Assembly
8	000372-40	3/8" NPT x 24" Long Riser
9	B-0155-LNEZ	Easy-Install Add-On Faucet
10	012442-40	Cold Eterna Spindle Assembly w/ Spring Check
11	002711-40	Cold Eterna Spindle Asm w/ Spring Check, Handle, Index & Screw
12	001660-45	Blue Index-CW
13	002290-45	Lock Washer
14	000965-45	Lock Nut
15	012534-45	Flexible Connector Hose
16	012443-40	Hot Eterna Spindle Assembly w/ Spring Check
17	002712-40	Hot Eterna Spindle Asm w/ Spring Check, Handle, Index & Screw
18	001638-45	Lever Handle
19	001661-45	Red Index-HW
20	000922-45	Lever Handle Screw
21	007947-40	Quarter Turn Spindle Assembly
22	B-PT	Stream Regulator Outlet
23	001048-45	Nozzle Tip Washer
24	See Chart	Swing Nozzle

**Product Specifications:**

**EasyInstall Pre-Rinse Unit:**  
Single Deck Mount Base Mixing Faucet, Flexible Supply Hoses, 24" Riser, Overhead Spring, 44" Flex Hose, B-0108 / B-0108-C Spray Valve & Wall Bracket (Optional)

Drawn <b>JRM</b>	Checked <b>DMH</b>	Approved <b>JHB</b>
Scale: <b>NTS</b>		Date: <b>12/04/09</b>