



**T&S BRASS AND BRONZE WORKS, INC.**

2 Saddleback Cove / P.O. Box 1088  
Travelers Rest, SC 29690



REG. #A2601  
ISO #9001

Model No.

**B-0113-B**

Item No.

Travelers Rest, SC: 800-476-4103 Simi Valley, CA: 800-423-0150 Fax: 864-834-3518 www.tsbrass.com

This Space for Architect/Engineer Approval

Job Name \_\_\_\_\_ Date \_\_\_\_\_

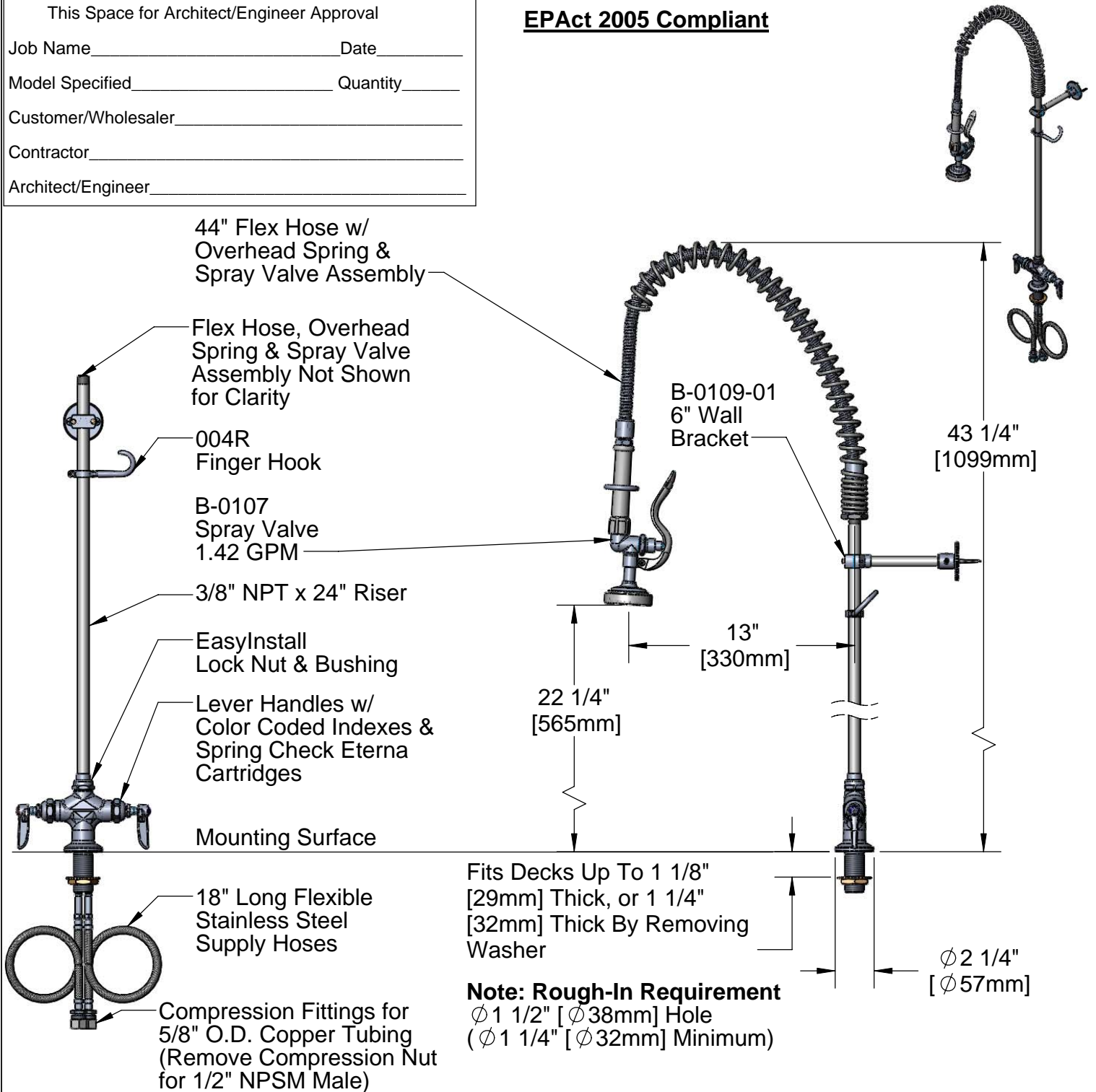
Model Specified \_\_\_\_\_ Quantity \_\_\_\_\_

Customer/Wholesaler \_\_\_\_\_

Contractor \_\_\_\_\_

Architect/Engineer \_\_\_\_\_

**EPAct 2005 Compliant**



Product Specifications: <b>EasyInstall Pre-Rinse Unit:</b> Single Deck Mount Base Mixing Faucet, Flexible Supply Hoses, 24" Riser, Overhead Spring, 44" Flex Hose, B-0107 Spray Valve & 6" Wall Bracket	Drawn <b>KJG</b>	Checked <b>DHL</b>	Approved <b>JHB</b>
	Scale: <b>1:8</b>		Date: <b>10/22/08</b>



# T&S BRASS AND BRONZE WORKS, INC.

2 Saddleback Cove / P.O. Box 1088  
Travelers Rest, SC 29690



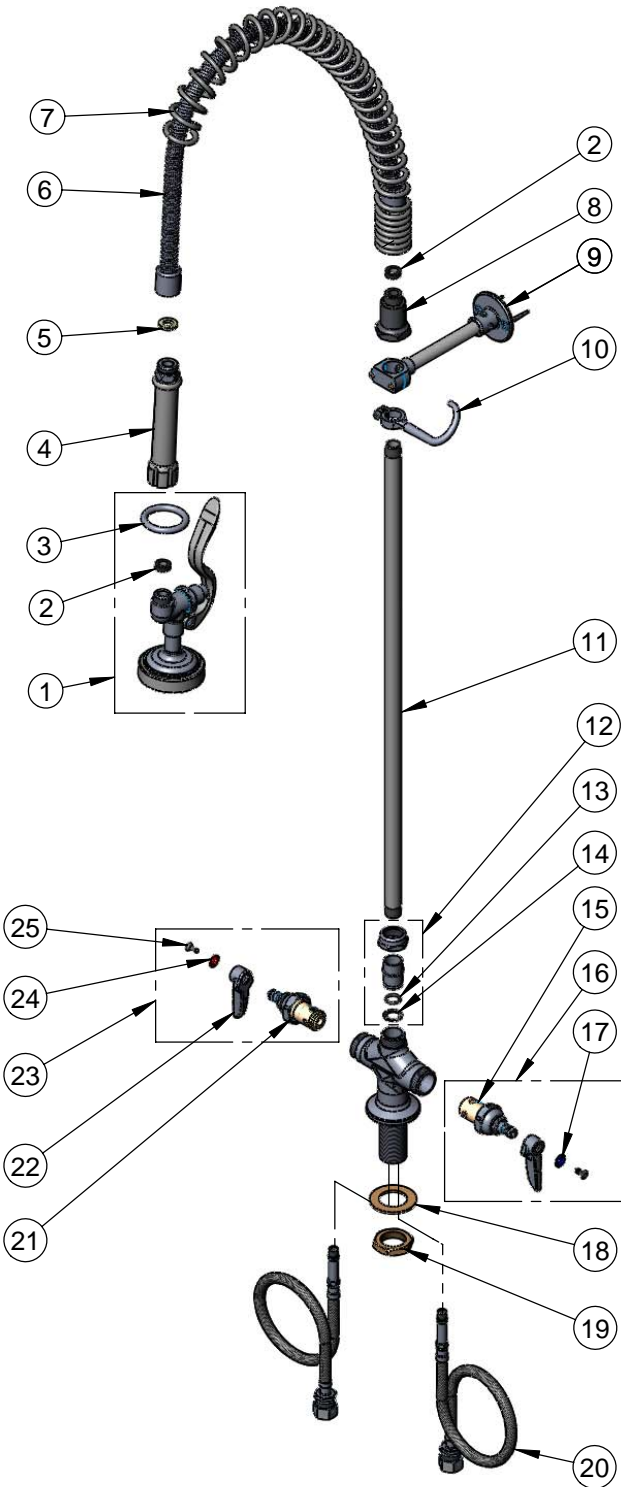
REG. #A2601  
ISO #9001

Model No.

**B-0113-B**

Item No.

Travelers Rest, SC: 800-476-4103 Simi Valley, CA: 800-423-0150 Fax: 864-834-3518 www.tsbrass.com



ITEM NO.	SALES NO.	DESCRIPTION
1	B-0107	Spray Valve Asm
2	010476-45	#27 Washer
3	000907-45	Spray Valve Hold Down Ring
4	002987-40	Grip Handle Assembly
5	001014-45	Washer, B-0100 Hose Barrel
6	B-0044-H2A	44" Flex Hose Assembly, Less Handle
7	000888-45	EasyInstall Overhead Spring
8	000821-40	Spring Body
9	B-0109-01	6" Wall Bracket Assembly
10	004R	Finger Hook Assembly
11	000372-40	3/8" NPT x 24" Long Riser
12	EZ-K	EasyInstall Kit: Bushing, O-Ring, Lock Washer & Loctite 222
13	001065-45	O-Ring
14	014200-45	Star Washer, Anti-Rotation
15	012442-40	Cold Eterna Spindle Assembly w/ Spring Check
16	002711-40	Cold Eterna Spindle Assembly w/ Spring Check, Handle, Index & Screw
17	001660-45	Blue Index-CW
18	002290-45	Lock Washer
19	000965-45	Lock Nut
20	012534-45	Flexible Connector Hose
21	012443-40	Hot Eterna Spindle Assembly w/ Spring Check
22	001638-45	Lever Handle
23	002712-40	Hot Eterna Spindle Assembly w/ Spring Check, Index & Screw
24	001661-45	Red Index-HW
25	000922-45	Lever Handle Screw

**Product Specifications:**

**EasyInstall Pre-Rinse Unit:**  
Single Deck Mount Base Mixing Faucet, Flexible Supply Hoses, 24" Riser, Overhead Spring, 44" Flex Hose, B-0107 Spray Valve & 6" Wall Bracket

Drawn <b>KJG</b>	Checked <b>DHL</b>	Approved <b>JHB</b>
Scale: <b>NTS</b>		Date: <b>10/22/08</b>