



T&S BRASS AND BRONZE WORKS, INC.

2 SADDLEBACK COVE / P.O. BOX 1088 / TRAVELERS REST, SC 29690

PHONE 800-476-4103

FAX 864-834-3518



REG.#A2601
ISO #9002

Model No.

B-0134

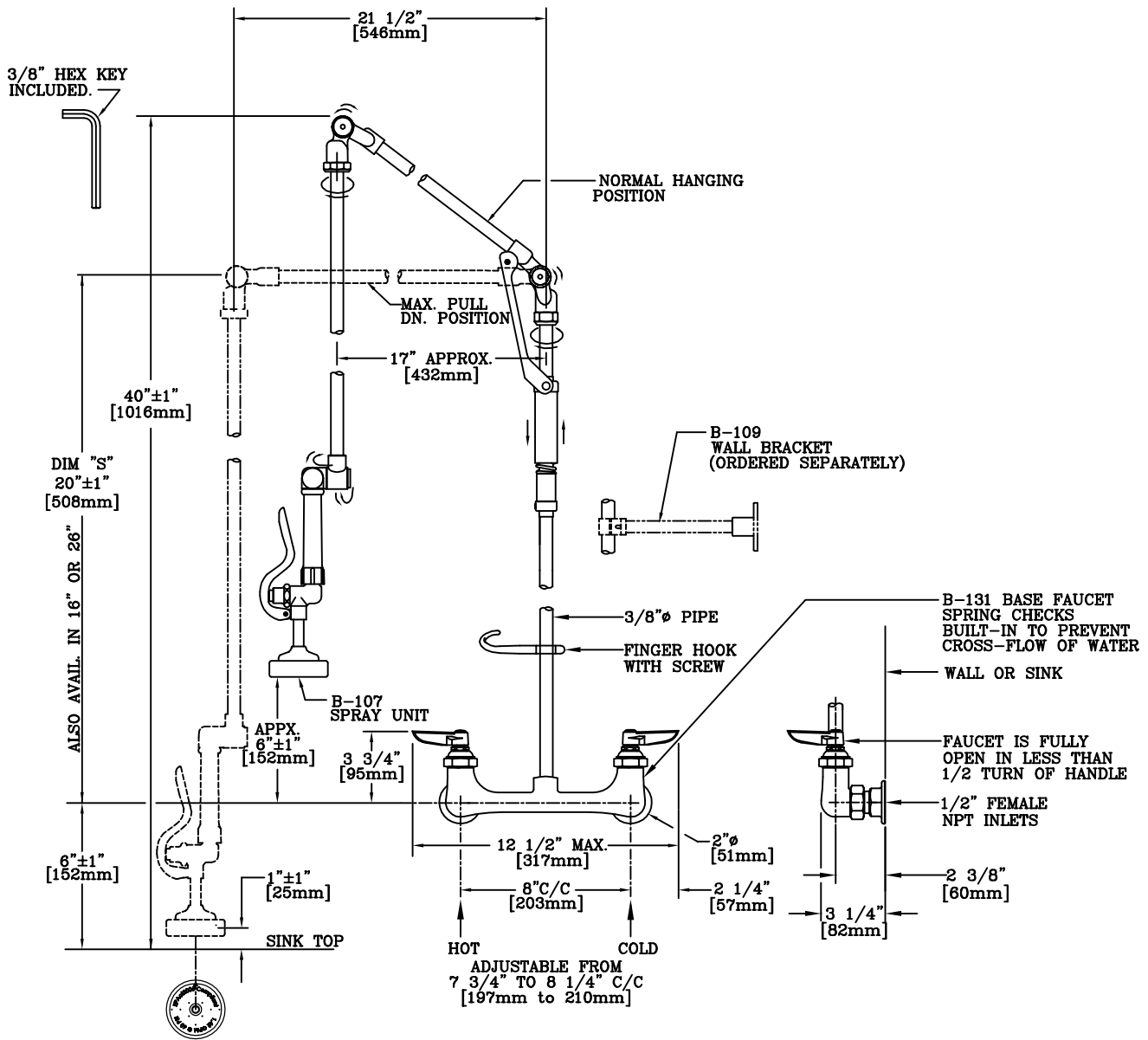
Item No.:

Job Name:

Architect/Engineer Approval:

Notes:

EPAct2005 COMPLIANT



NOTE: ALSO AVAILABLE WITH 1/2" NPT MALE INLETS AND LOCKNUTS ON FAUCETS IN PLACE OF FEMALE INLETS.

Product Description:

Drawn:

Checked

Scale:

RJK

JRM

1.5" = 1'

Approved

Date:

JHB

01-04-06

PRE-RINSE UNIT