



T&S BRASS AND BRONZE WORKS, INC.

2 Saddleback Cove / P.O. Box 1088
Travelers Rest, SC 29690



REG. #A2601
ISO #9001

Model No.
B-0236

Item No.

Travelers Rest, SC: 800-476-4103 Simi Valley, CA: 800-423-0150 Fax: 864-834-3518 www.tsbrass.com

This Space for Architect/Engineer Approval

Job Name _____ Date _____

Model Specified _____ Quantity _____

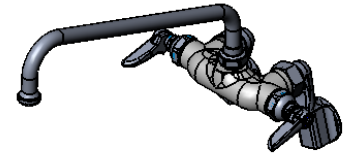
Customer/Wholesaler _____

Contractor _____

Architect/Engineer _____



ADA Compliant



Notes:

1. Nozzle Swings 360°
2. Also Available with B-0199-01 Non-splash Aerator

062X
12" Swing Nozzle
w/ Stream Regulator

Wall or Sink Back

3 1/16"
[78mm]

4 13/16"
[122mm]

12"
[305mm]

Ø 2"
[51mm]

Inlets Adjustable from
2 1/4" to 8 1/4" c/c
[57mm] [210mm]
Below or Above Centerline

1/2" NPT Female Inlet

Lever Handles w/
Color Coded Indexes

9"
[228mm]

Product Specifications:

Combination Sink Polish Chrome Faucet with 12" Swing Nozzle & Adjustable Inlet Arms

Drawn
ARH

Checked
DHL

Approved
JHB

Scale:

1:4

Date:

12/20/07



T&S BRASS AND BRONZE WORKS, INC.

2 Saddleback Cove / P.O. Box 1088
Travelers Rest, SC 29690



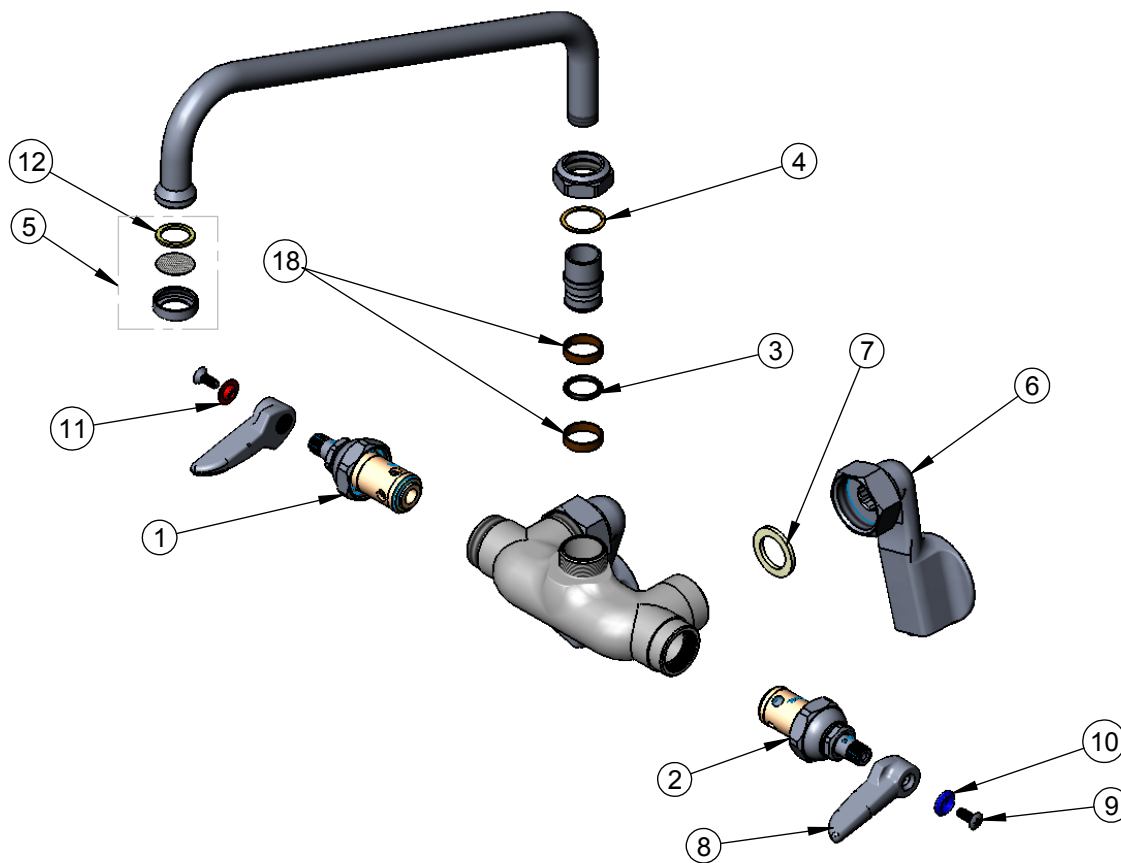
REG. #A2601
ISO #9001

Model No.
B-0236

Item No.

Travelers Rest, SC: 800-476-4103 Simi Valley, CA: 800-423-0150 Fax: 864-834-3518 www.tsbrass.com

| ITEM NO. | SALES NO. | DESCRIPTION |
|----------|-----------|---------------------------------------|
| 1 | 005960-40 | Spindle Asm, Eterna "Hot" |
| 2 | 005959-40 | Spindle Asm. Eterna "Cold" |
| 3 | 001074-45 | O-Ring |
| 4 | 009538-45 | Swivel Washer |
| 5 | B-PT | Stream Regulator |
| 6 | 00GG | Flange Assembly, 1/2" NPT, Adjustable |
| 7 | 001019-45 | Washer, Coupling Nut |
| 8 | 001638-45 | Lever Handle |
| 9 | 000922-45 | Lever Handle Screw |
| 10 | 001660-45 | Blue Index-CW |
| 11 | 001661-45 | Red Index-HW |
| 12 | 009638-45 | Washer |
| 18 | 011429-45 | Swivel Sleeves (2) |



Product Specifications:

Combination Sink Polish Chrome Faucet with 12" Swing
Nozzle & Adjustable Inlet Arms

| | | |
|----------------------|-----------------------|--------------------------|
| Drawn ARH | Checked DHL | Approved JHB |
| Scale: 1:8 | | Date: 12/20/07 |