



T&S BRASS AND BRONZE WORKS, INC.

2 SADDLEBACK COVE / P.O. BOX 1088 / TRAVELERS REST, SC 29690
PHONE 800-476-4103 FAX 864-834-3518



REG.#A2601
ISO #9002

Model No.

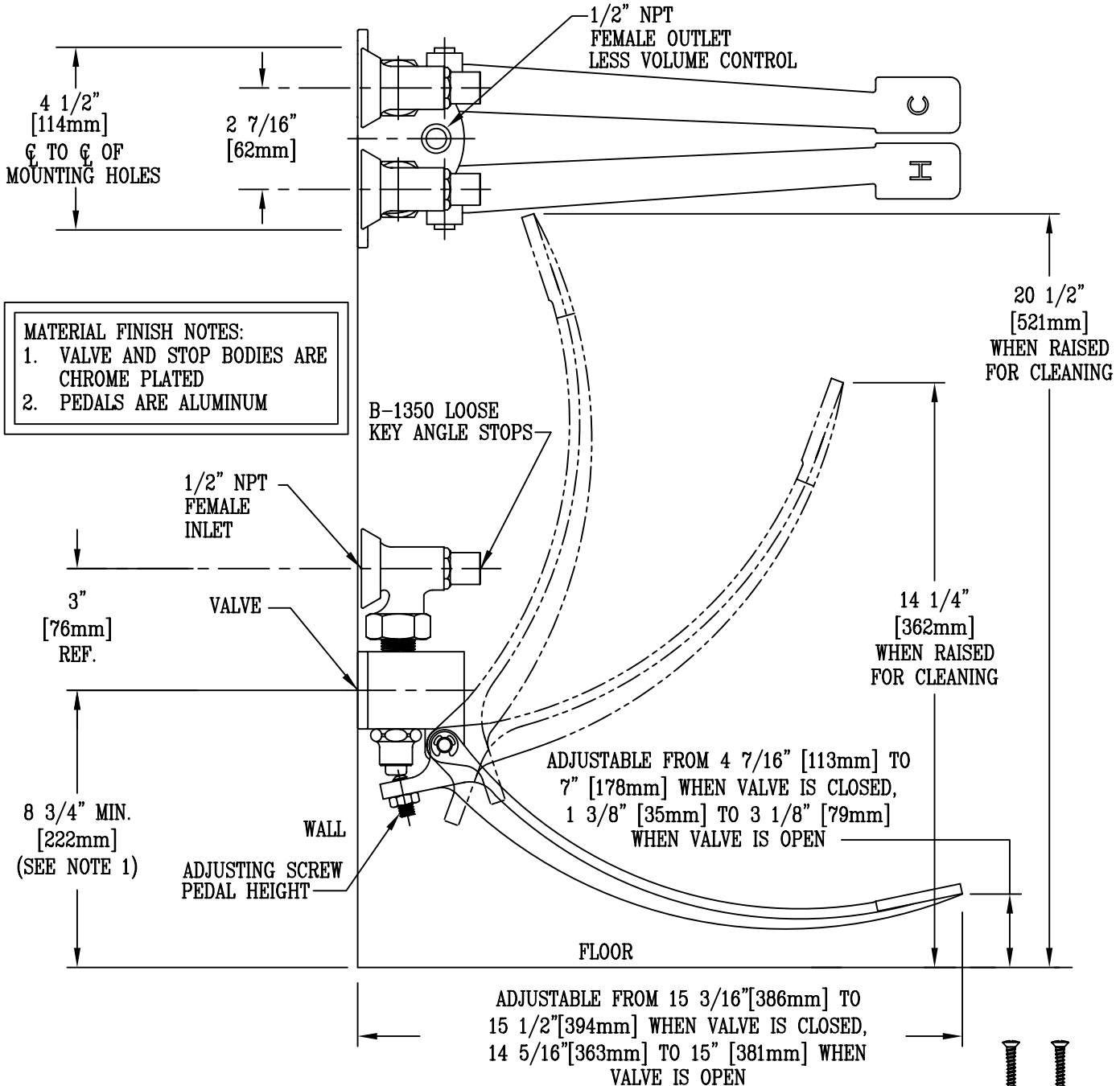
B-0504-03

Item No.:

Job Name:

Architect/Engineer Approval:

Notes:



NOTE 1. ALL PEDAL POSITION DIMENSIONS ARE BASED ON A RECOMMENDED MINIMUM MOUNTING. HEIGHT OF 8 3/4" [222mm] ABOVE FINISHED FLOOR

NOTE 2. FOR LOOSE KEY ANGLE STOPS AND VOLUME CONTROL, SPECIFY B-0504-02



FURNISHED w/ (2) WOOD MOUNTING SCREWS

Product Description:

DOUBLE PEDAL VALVE w/
LOOSE KEY ANGLE STOPS

Drawn:

DHL

Checked

JRM

Scale:

1:4

Approved

JHB

Date:

07/25/08