

T&S BRASS AND BRONZE WORKS, INC.

2 SADDLEBACK COVE / P.O. BOX 1088 / TRAVELERS REST, SC 29690

PHONE 800-476-4103

FAX 864-834-3518



REG.#A2601
ISO #9002

Model No.

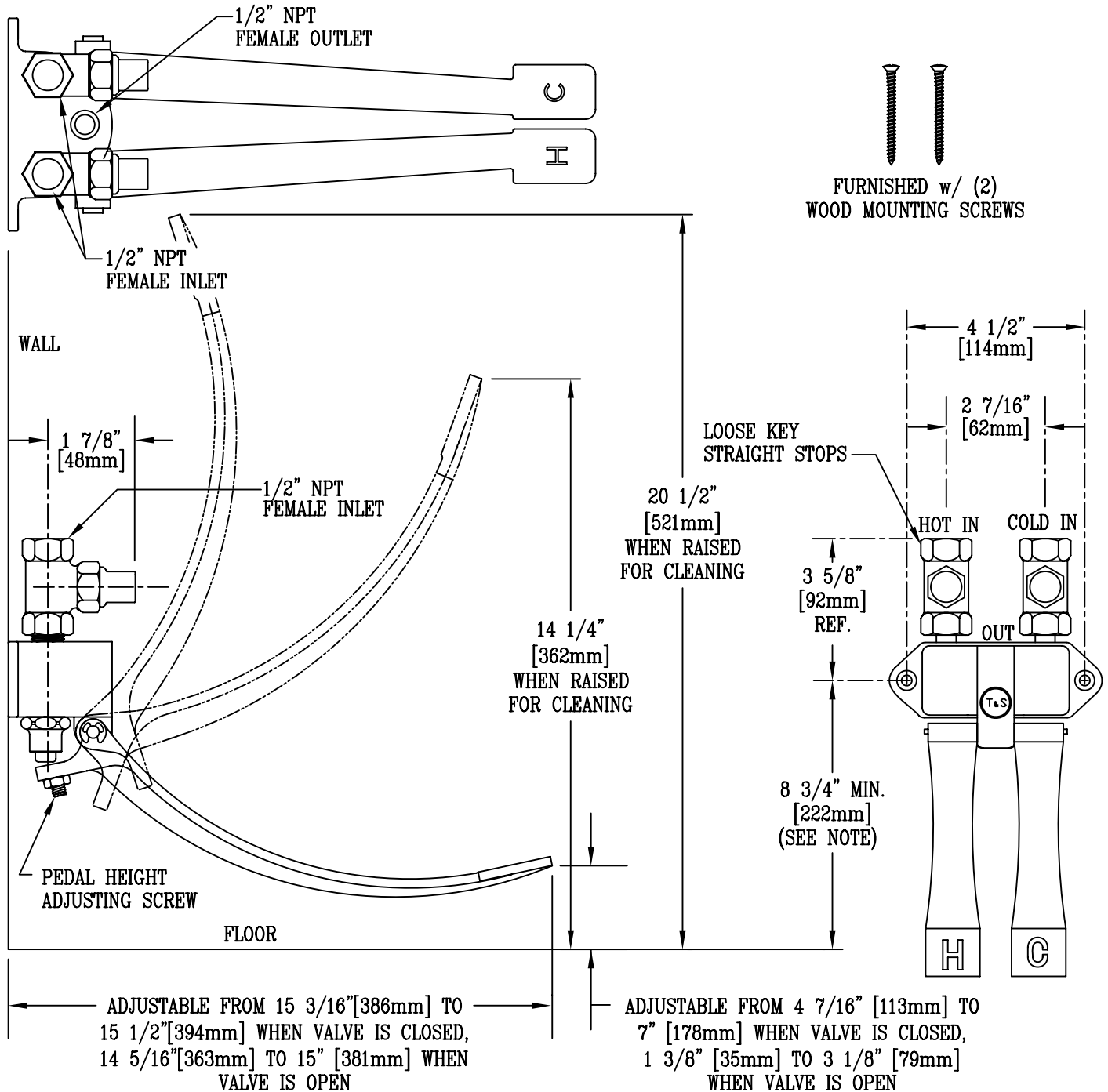
B-0504-LKS

Item No.:

Job Name:

Architect/Engineer Approval:

Notes:



NOTE: ALL PEDAL POSITION DIMENSIONS ARE BASED ON MINIMUM RECOMMENDED MOUNTING HEIGHT OF 8 3/4" [222mm] ABOVE FINISHED FLOOR.

Product Description:

DOUBLE PEDAL VALVE WITH LOOSE KEY STRAIGHT STOPS

Drawn:

DHL

Approved

JHB

Checked

JRM

Scale:

1:4

Date:

07/25/08