

T&S BRASS AND BRONZE WORKS, INC.

2 SADDLEBACK COVE / P.O. BOX 1088 / TRAVELERS REST, SC 29690

PHONE 800-476-4103 - FAX 864- 834-3518



REG. #A2601
ISO #9001

Model No.

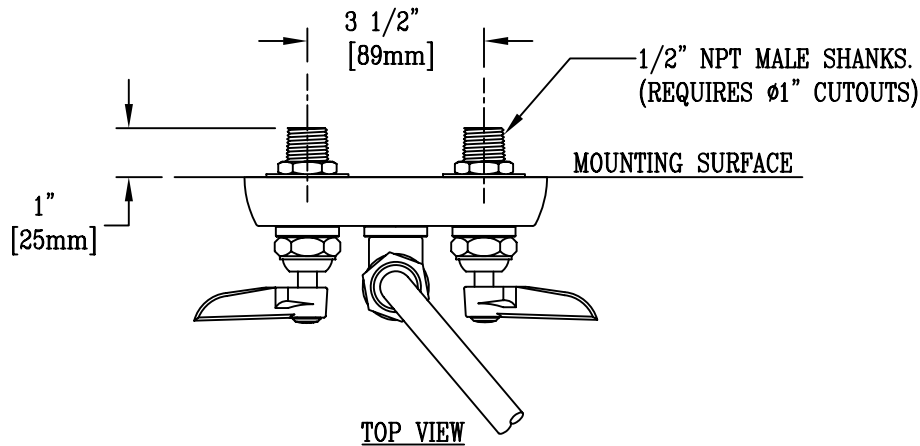
B-1135

**RELIABILITY
BUILT IN**

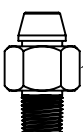
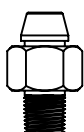
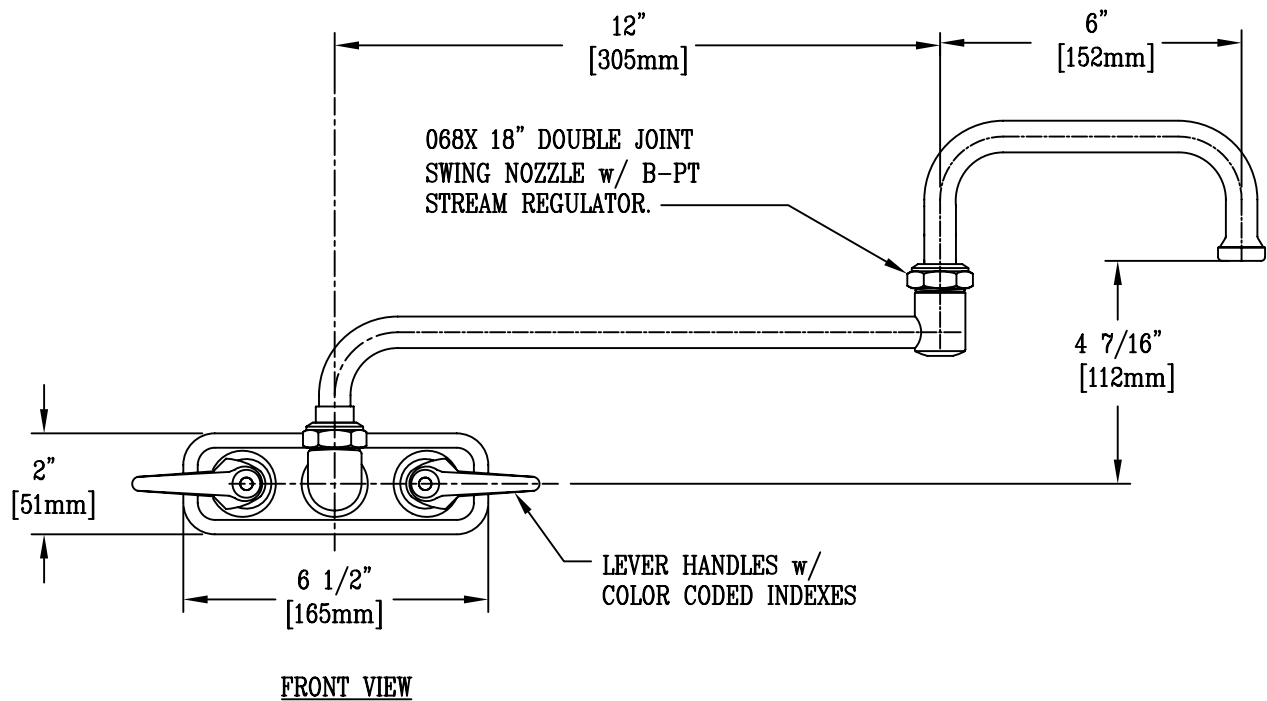
Job Name:

Architect/Engineer Approval:

Notes:



ADA Compliant



150A Tailpiece and Nut
Furnished for 1/4" NPT
Connection

B-1100-K ELBOW KIT SOLD
SEPARATELY. CONTAINS (2)
1/2" NPT MALE 90° ELBOWS

Product Description:

WALL MOUNT WORKBOARD FAUCET w/ 1/2" NPT
MALE SHANKS, 3 1/2" INLET CENTERS, 068X 18" DOUBLE JOINT
SWING NOZZLE, B-PT STREAM REGULATOR & LEVER HANDLES

Drawn:

KJG

Checked

JRM

Scale:

1 : 4

Approved

JHB

Date:

12/19/07