



# T&S BRASS AND BRONZE WORKS, INC.

2 Saddleback Cove / P.O. Box 1088  
Travelers Rest, SC 29690



REG. #A2601  
ISO #9001

Model No.

**B-1149**

Item No.

Travelers Rest, SC: 800-476-4103 Simi Valley, CA: 800-423-0150 Fax: 864-834-3518 www.tsbrass.com

This Space for Architect/Engineer Approval

Job Name \_\_\_\_\_ Date \_\_\_\_\_

Model Specified \_\_\_\_\_ Quantity \_\_\_\_\_

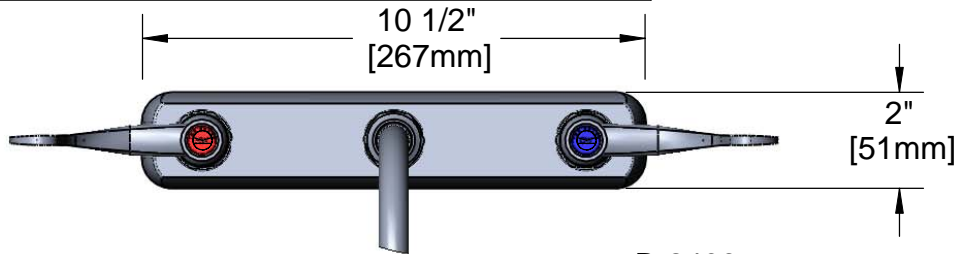
Customer/Wholesaler \_\_\_\_\_

Contractor \_\_\_\_\_

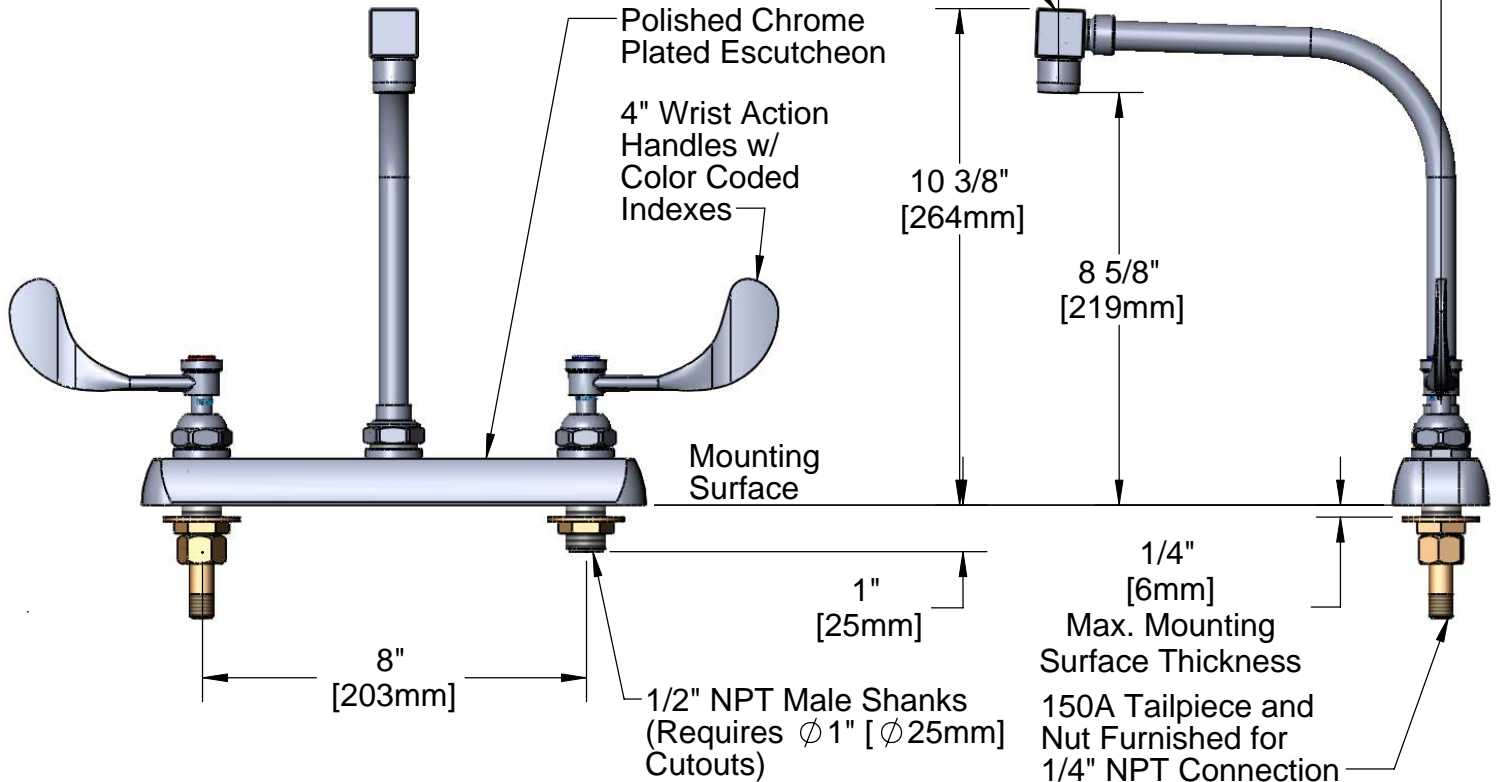
Architect/Engineer \_\_\_\_\_



**ADA Compliant**



B-2403  
High Rise Swing Spout  
w/ B-0199-01 Aerator  
2.2 GPM



**Product Specifications:**

8" Inlet Centers Workboard Faucet w/ 4" Wrist Action Handles, B-2403 High Rise Swing Spout Assembly w/ B-0199-01 Aerator 2.2 GPM & 1/2" NPT Male Shanks

Drawn <b>KJG</b>	Checked <b>DHL</b>	Approved <b>JHB</b>
Scale: <b>1:4</b>		Date: <b>09/29/08</b>



# T&S BRASS AND BRONZE WORKS, INC.

2 Saddleback Cove / P.O. Box 1088  
Travelers Rest, SC 29690



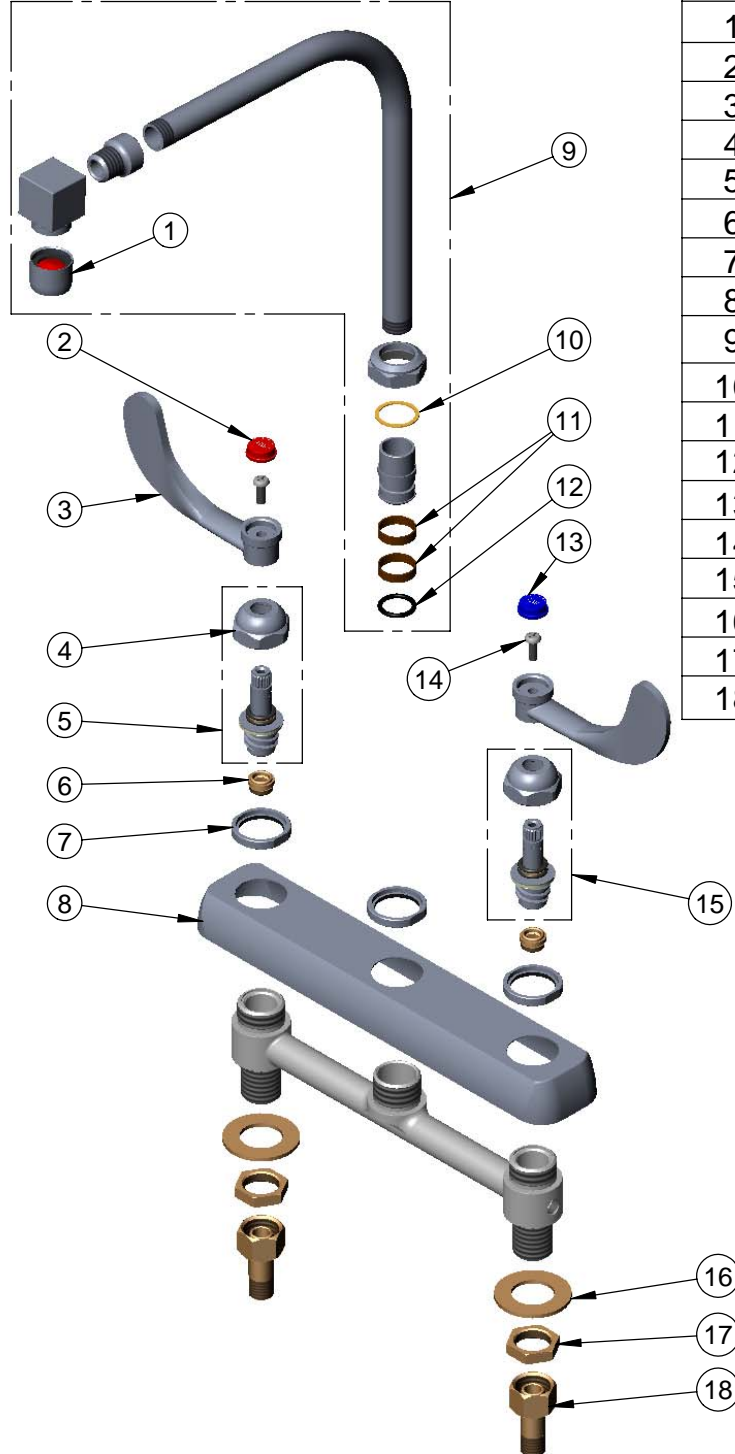
REG. #A2601  
ISO #9001

Model No.

B-1149

Item No.

Travelers Rest, SC: 800-476-4103 Simi Valley, CA: 800-423-0150 Fax: 864-834-3518 www.tsbrass.com



ITEM NO.	SALES NO.	DESCRIPTION
1	B-0199-01	2.2 GPM Aerator, Female
2	001194-45	Red HW Index
3	B-WH4	4" Wrist Action Handle
4	009749-25	Bonnet Nut
5	009423-40	Spindle Asm, RH, Hot
6	000763-20	Seat
7	000712-25	Escutcheon Lock Nut
8	001259-40	Escutcheon
9	B-2403	High Rise Swing Spout Assembly
10	009538-45	Swivel Washer
11	011429-45	Swivel Sleeves (2)
12	001074-45	O-Ring
13	001686-45	Blue CW Index
14	000925-45	Lab Handle Screw
15	009424-40	Spindle Asm, LH, Cold
16	000999-45	Brass Lock Washer
17	002954-45	Shank Lock Nut
18	150A	Bag of (1) Nut & (1) Tailpiece

**Product Specifications:**

8" Inlet Centers Workboard Faucet w/ 4" Wrist Action Handles, B-2403 High Rise Swing Spout Assembly w/ B-0199-01 Aerator 2.2 GPM & 1/2" NPT Male Shanks

Drawn <b>KJG</b>	Checked <b>DHL</b>	Approved <b>JHB</b>
Scale: 1:4		Date: 09/29/08