



T&S BRASS AND BRONZE WORKS, INC.

2 Saddleback Cove / P.O. Box 1088
Travelers Rest, SC 29690



REG. #A2601
ISO #9001

Model No.
B-1205

Item No.

Travelers Rest, SC: 800-476-4103 Simi Valley, CA: 800-423-0150 Fax: 864-834-3518 www.tsbrass.com

This Space for Architect/Engineer Approval

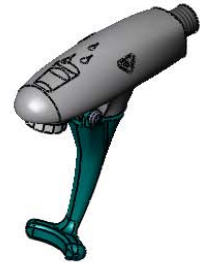
Job Name _____ Date _____

Model Specified _____ Quantity _____

Customer/Wholesaler _____

Contractor _____

Architect/Engineer _____



Product Specifications:

Wall Mount Glass Filler, Push Back Design,
3/8" NPT Male Inlet, Less Flange,
Blue Self-Closing Lexan Arm

Drawn
JRM

Checked
DMH

Approved
JHB

Scale:

1:1

Date:

12/19/08



T&S BRASS AND BRONZE WORKS, INC.

2 Saddleback Cove / P.O. Box 1088
Travelers Rest, SC 29690



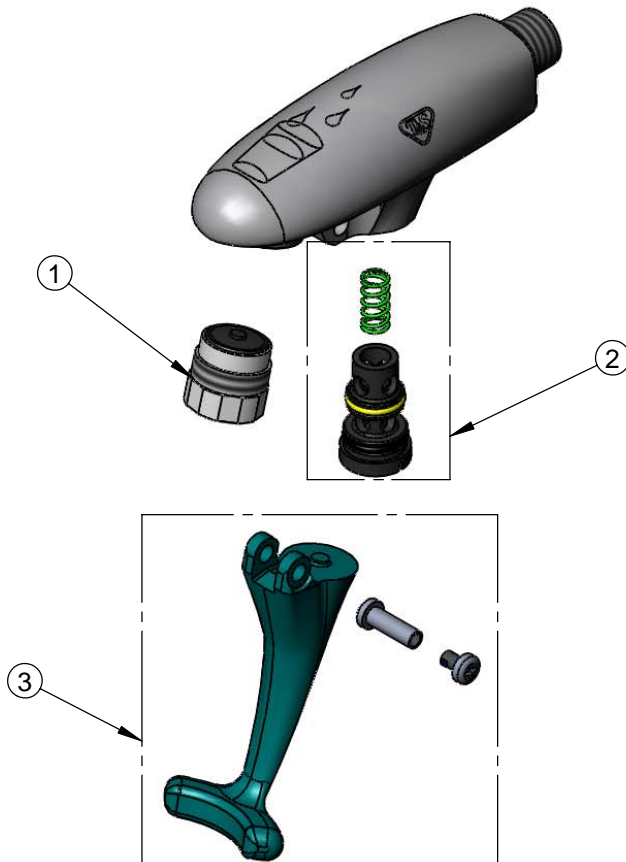
REG. #A2601
ISO #9001

Model No.
B-1205

Item No.

Travelers Rest, SC: 800-476-4103 Simi Valley, CA: 800-423-0150 Fax: 864-834-3518 www.tsbrass.com

| ITEM NO. | SALES NO. | DESCRIPTION |
|----------|-----------|---------------------------------|
| 1 | 015588-40 | Adjustable Outlet w/Torx Wrench |
| 2 | 015589-40 | Valve Assembly |
| 3 | 015550-45 | Lever Arm Repair Kit |



Product Specifications:

Wall Mount Glass Filler, Push Back Design,
3/8" NPT Male Inlet, Less Flange,
Blue Self-Closing Lexan Arm

| | | |
|---------------|----------------|-------------------|
| Drawn JRM | Checked DMH | Approved JHB |
| Scale: 1:2 | | Date: 12/19/08 |