



# T&S BRASS AND BRONZE WORKS, INC.

2 Saddleback Cove / P.O. Box 1088  
Travelers Rest, SC 29690



REG. #A2601  
ISO #9001

Model No.  
**B-2955**

Item No.

Travelers Rest, SC: 800-476-4103 Simi Valley, CA: 800-423-0150 Fax: 864-834-3518 www.tsbrass.com

This Space for Architect/Engineer Approval

Job Name \_\_\_\_\_ Date \_\_\_\_\_

Model Specified \_\_\_\_\_ Quantity \_\_\_\_\_

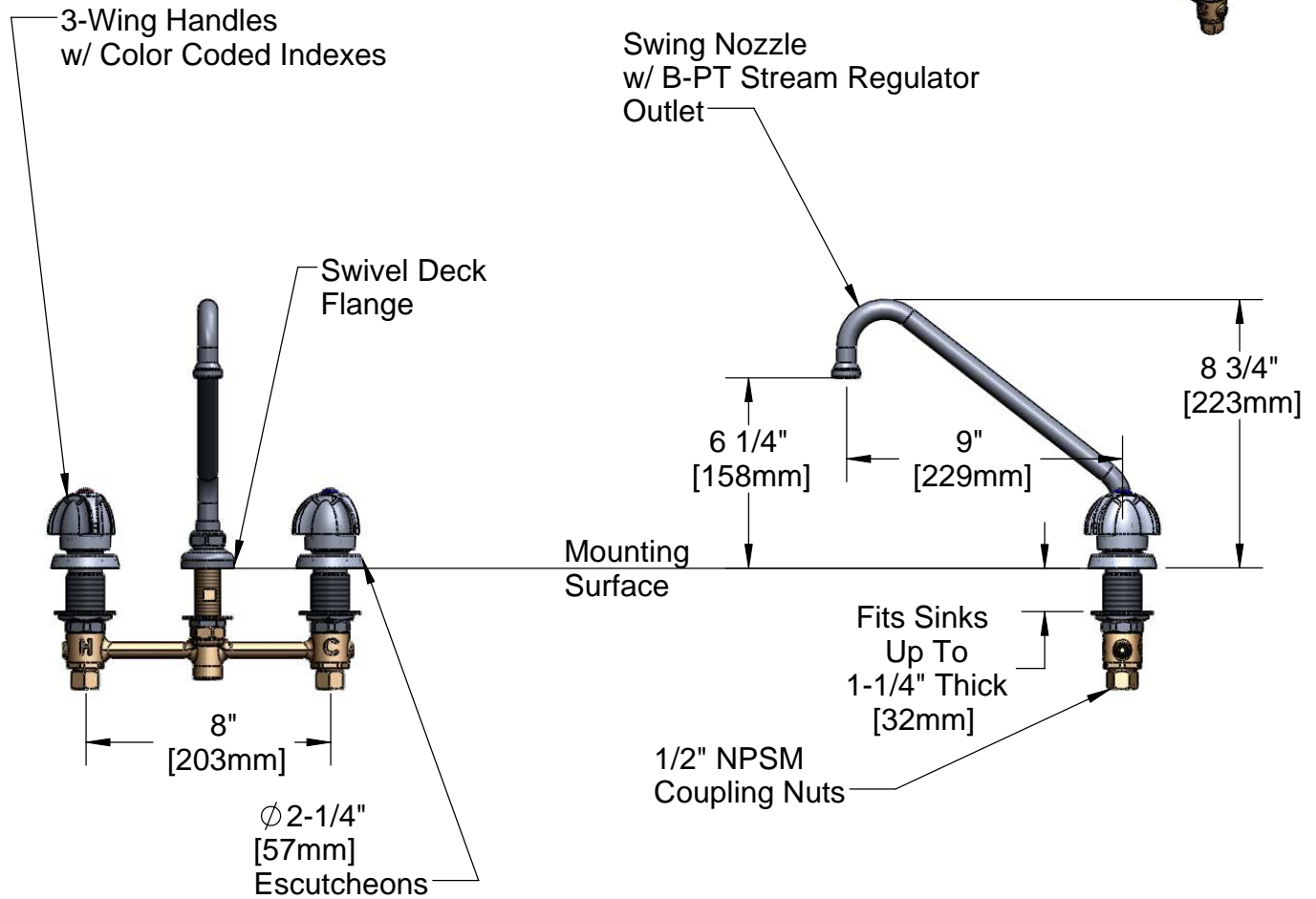
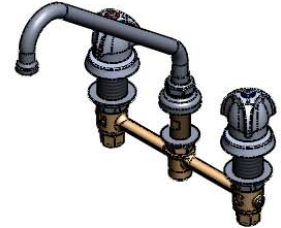
Customer/Wholesaler \_\_\_\_\_

Contractor \_\_\_\_\_

Architect/Engineer \_\_\_\_\_



**ADA Compliant**



Note: Rough-In Required:  
 Ø 1" [25mm] for Center Shank  
 Ø 1-1/2" [38mm] for Hot/Cold Side [1-1/4" [32mm] Minimum]

Product Specifications:

**EasyInstall Faucet w/3-Wing Handles,  
2 'Hot' Compression Cartridges, 8" Inlet Centers,  
Swing Nozzle w/ Stream Regulator Outlet**

Drawn <b>JRM</b>	Checked <b>GEF</b>	Approved <b>JHB</b>
Scale: <b>NTS</b>		Date: <b>12/08/08</b>



**T&S BRASS AND BRONZE WORKS, INC.**

2 Saddleback Cove / P.O. Box 1088  
Travelers Rest, SC 29690



REG. #A2601  
ISO #9001

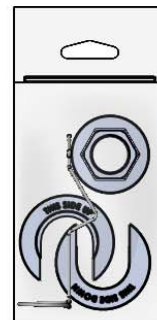
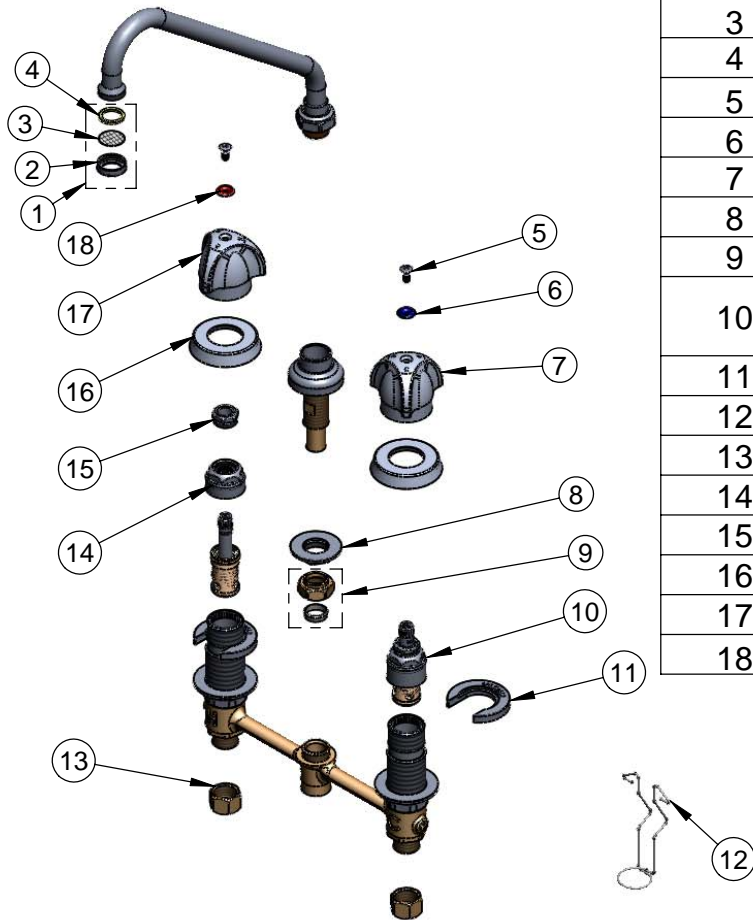
Model No.

**B-2955**

Item No.

Travelers Rest, SC: 800-476-4103 Simi Valley, CA: 800-423-0150 Fax: 864-834-3518 www.tsbrass.com

ITEM NO.	SALES NO.	DESCRIPTION
1	B-PT	Stream Regulator Outlet
2	000863-25	Index Ring
3	001323-45	Screen
4	001048-45	Nozzle Tip Washer
5	000922-45	Lever Handle Screw
6	001660-45	Blue Index-CW
7	001784-40	Lav. Handle, 3 Wing - Cold
8	016742-45	Center Flange Nut
9	016745-45	Compression Nut & Fitting
10	017327-40	CWS EasyInstall RTC Eterna (Teflon) -Short Bonnet
11	016749-45	Sidebody C-Washer
12	016777-45	CWS Hanger
13	000958-20	Coupling Nut
14	016743-25	CWS Bonnet Assembly
15	009002-25	Packing Nut Assembly
16	017292-45	Metering CWS Escutcheon
17	001783-40	Lav. Handle, 3 Wing - Hot
18	001661-45	Red Index-HW



017245-40  
Installation Repair Kit  
Includes #8, (2)#11, & #12

Product Specifications:

EasyInstall Faucet w/3-Wing Handles,  
2 'Hot' Compression Cartridges, 8" Inlet Centers,  
Swing Nozzle w/ Stream Regulator Outlet

Drawn <b>JRM</b>	Checked <b>GEF</b>	Approved <b>JHB</b>
Scale: <b>NTS</b>		Date: <b>12/08/08</b>