

# T&S BRASS AND BRONZE WORKS, INC.

2 SADDLEBACK COVE / P.O. BOX 1088 / TRAVELERS REST, SC 29690

PHONE 800-476-4103

FAX 864-834-3518



REG.#A2601  
ISO #9002

Model No.

BL-4700-01

Item No.:

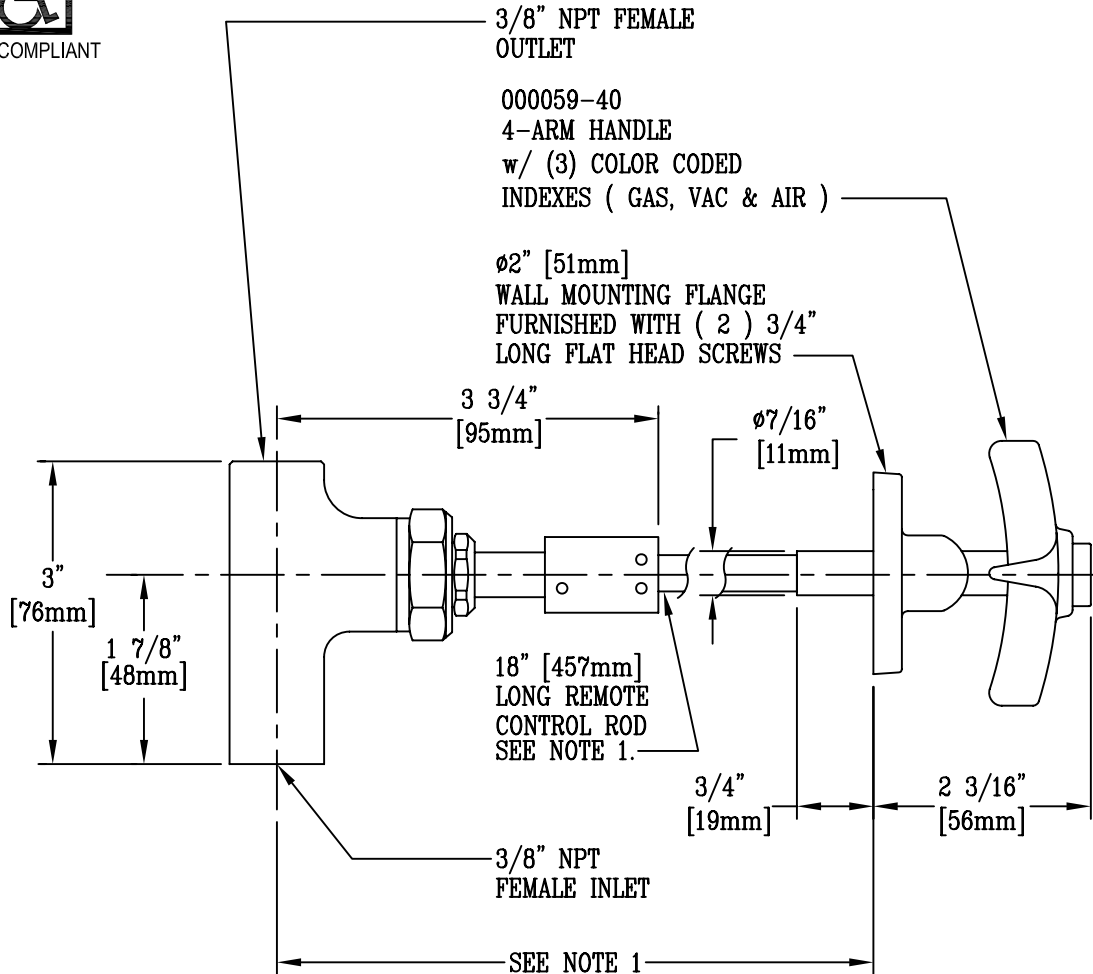
Job Name:

Architect/Engineer Approval:

Notes:



ADA COMPLIANT



- NOTES:
1. STANDARD ROD LENGTH IS 18". WHEN ORDERING, SPECIFY ACTUAL LENGTH DESIRED. MINIMUM IS 4 1/2" [114mm]
  2. VALVE CAN BE FURNISHED WITH 3/8" NPT MALE OR 1/2" NPT MALE INLET WHEN SPECIFIED
  3. IF REMOTE CONTROL VALVE IS TO BE USED ON METAL FURNITURE, SEE SPEC DRAWING #BL-4700-01MF
  4. MAY ALSO BE FURNISHED WITH ANGLE GUIDE BUSHING, OR BLACK NYLON GUIDE BUSHING.

Product Description:

REMOTE CONTROL VALVE FOR GASES w/  
4-ARM HANDLE, WALL FLANGE, VALVE BODY  
w/ 3/8" NPT FEMALE INLET & OUTLET

Drawn:

KJG

Checked

DMH

Scale:

1:2

Approved

JHB

Date:

08/26/08