



**T&S BRASS AND BRONZE WORKS, INC.**  
 2 SADDLEBACK COVE / P.O. BOX 1088 / TRAVELERS REST, SC 29690  
 PHONE 800-476-4103 - FAX 864- 834-3518



Sales No.

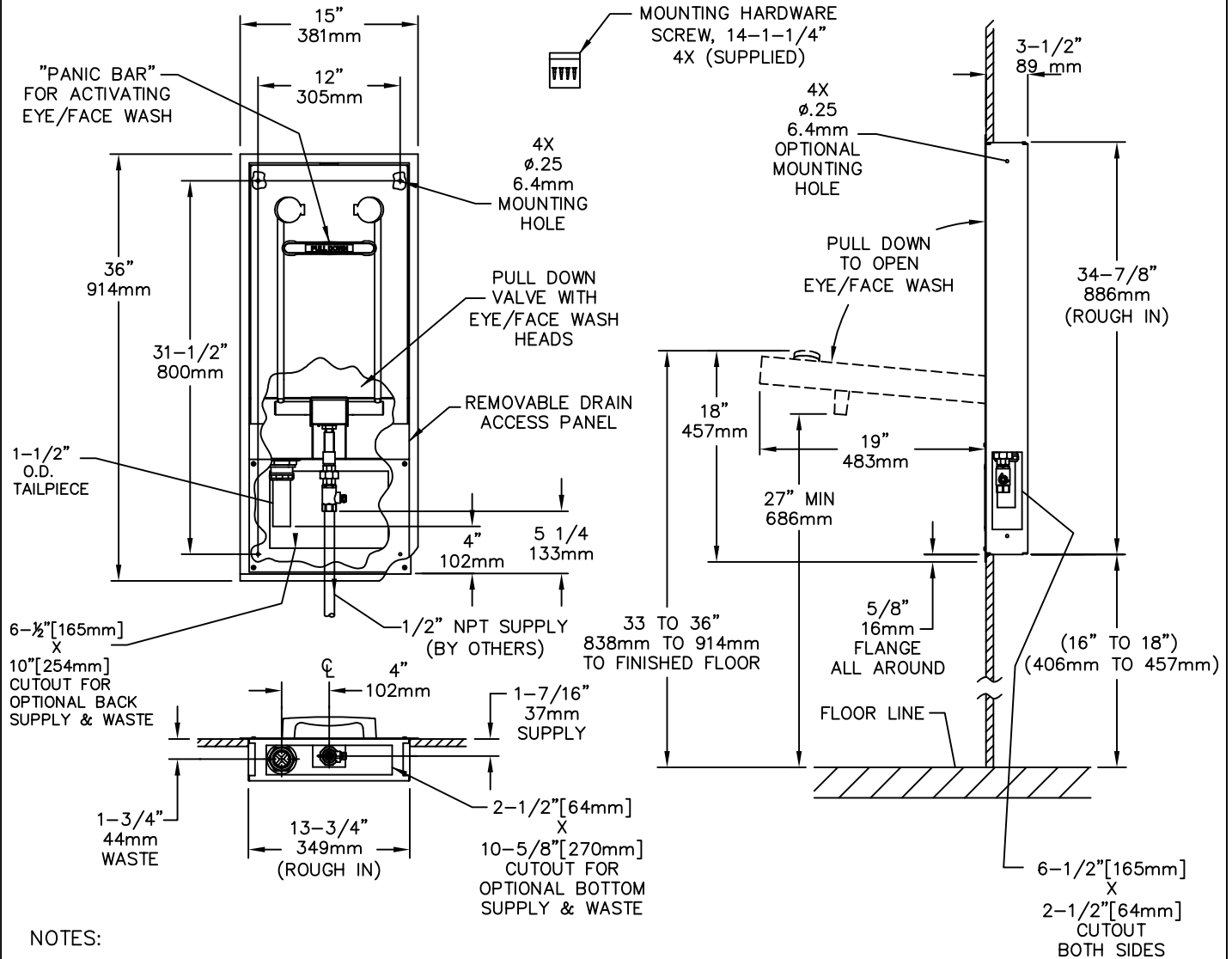
EW-7656WC

**RELIABILITY  
 BUILT IN**

Job Name:

Architect/Engineer Approval:

Notes:



**NOTES:**

WHEN INSTALLING THIS UNIT, LOCAL, STATE OR FEDERAL CODES SHOULD BE ADHERED TO. WASTE CONNECTION MUST ADHERE TO LOCAL HEALTH AND PLUMBING CODES.  
 FLOW RATE FOR EYE/FACE WASH IS 5 GPM AND EXCEEDS ANSI STANDARD Z358.1.  
 USE SUPPLIED SCREWS TO INSTALL THE UNIT ON WALL STRUCTURE.  
 DIMENSIONS MAY VARY BY ± 1/2" [12.7mm].  
 ANSI STANDARD Z358.1 APPROVED

Product Description:

**EYE/FACE WASH  
 RECESS, WALL MOUNTED**

Drawn:

ARH

Checked:

GEF

Scale:

NONE

Approved:

JHB

Date:

12/14/07