



**MODEL:**  HOF14A-Q  HOF14-Q FR

**Free-Standing Cooler**



These water coolers are certified to **NSF/ANSI 61**.

**GENERAL**

Self-contained, electric refrigerated, free-standing water cooler designed to be easily accessible to able-bodied individuals. Unit is certified to NSF/ANSI 61 and meets requirements of the Safe Drinking Water Act. Unit provides 50° F water at 80° F inlet water and 90° F ambient.

**CABINET**

Stainless steel panels resist wear and corrosion. Durable Satin Finish helps hide water spots and fingerprints.

**COOLER TOP**

Non-corrosive stainless steel cooler top, number 300 series with satin finish resists stains and corrosion and is easy to maintain. Anti-splash ridge reduces splatter. Contoured to insure proper drainage.

**BUBBLER**

Vandal-resistant projector is one-piece, chrome-plated. Unit has integral hood guard design to prevent contamination from other users, airborne deposits and tampering.

**AUTOMATIC STREAM HEIGHT REGULATOR**

Self-closing assembly is located inside unit to prevent tampering. Unit resists corrosion and liming. A constant stream height is automatically maintained under line pressures that vary from 20 to 105 psi.

**INLET STRAINER**

Easily cleaned in-line strainer screen traps particles of 140 microns or larger before they enter the waterway.

**TEMPERATURE CONTROL**

Positive sensing thermostat for controlling temperature of storage tank water. Factory set at 50° F Adjustable ± 5° F.

**STORAGE TANK**

Non-pressurized stainless steel evaporator/storage tank for long life. Waterways are certified to NSF/ANSI 61, far exceeding the requirements of the Safe Drinking Water Act.

**REFRIGERATION SYSTEM**

Hermetically sealed, positive start compressor with lifetime lubrication and built-in overload protection, efficient capillary sizing, large capacity dryer-strainer, and self-lubricated fan cools copper/aluminum condenser. System uses R134A refrigerant. Protected by Halsey Taylor's Limited 5 Year Warranty.

**VENTILATION**

Insure proper ventilation by maintaining 6" (152mm) minimum clearance from cabinet louvers to wall.

**SUGGESTED SPECIFICATIONS**

Shall deliver 13.5 GPH of 50° F water at 90° F ambient and 80° F inlet water. Shall have stainless steel basin with removable drain strainer. Bubbler shall be vandal-resistant type. Separate valve and automatic stream regulator shall be mounted within cabinet. Refrigeration system shall employ high efficiency, positive start compressor using R134A, non-pressurized tank with totally encapsulated insulation and be controlled by positive sensing thermostat. The manufacturer shall certify the unit to meet the requirements of NSF/ANSI 61, and the Safe Drinking Water Act. Unit complies with ARI Standard 1010.

NOTE: Continued product improvement makes specifications subject to change without notice. See Halsey Taylor website for most current spec sheet.



**Stainless Steel Finish Only**

**Optional Accessories (extra cost)**

- Heating Element for Frost-Resistant Option (Factory installed- Model HOF14-Q-FR)
- Water Filter (not recommended for use with FR models)
- 220-240V 60HZ

**Trap and service stop not included.**

JOB NAME: \_\_\_\_\_

\_\_\_\_\_

ENGINEER/CONTRACTOR NAME: \_\_\_\_\_

APPROVAL: \_\_\_\_\_

DATE: \_\_\_\_\_

**HOF14-Q OUTDOOR COOLER**

Model No.	GPH Capacity Cooled to 50° F*				Base Rate Cap.	F.L. Amps	Shipping Weight lb.	Rated Watt Usage
	Ambient Air Temp							
	70°F	80°F	90°F†	100°F				
HOF14A-Q	16.3	14.9	13.5	12.2	13.5	7.5	90	690
HOF14A-Q FR	16.3	14.9	13.5	12.2	13.5	9.7	90	940
HOF14A-Q 220-240V 60HZ	16.3	14.9	13.5	12.2	13.5	3.75	90	690
HOF14A-Q FR 220-240V 60HZ	16.3	14.9	13.5	12.2	13.5	4.9	90	940

\* With projector service and tap water at 80° F

† UL listed and complies with ARI Standard 1010



## HOF14A-Q, HOF14-Q FR

### Free-Standing Outdoor Cooler

(CONTINUED)

#### PLUMBING CONNECTIONS

Waste and supply lines through back of cabinet.  
Waste 1 1/4" IPS. Supply 3/8" copper.

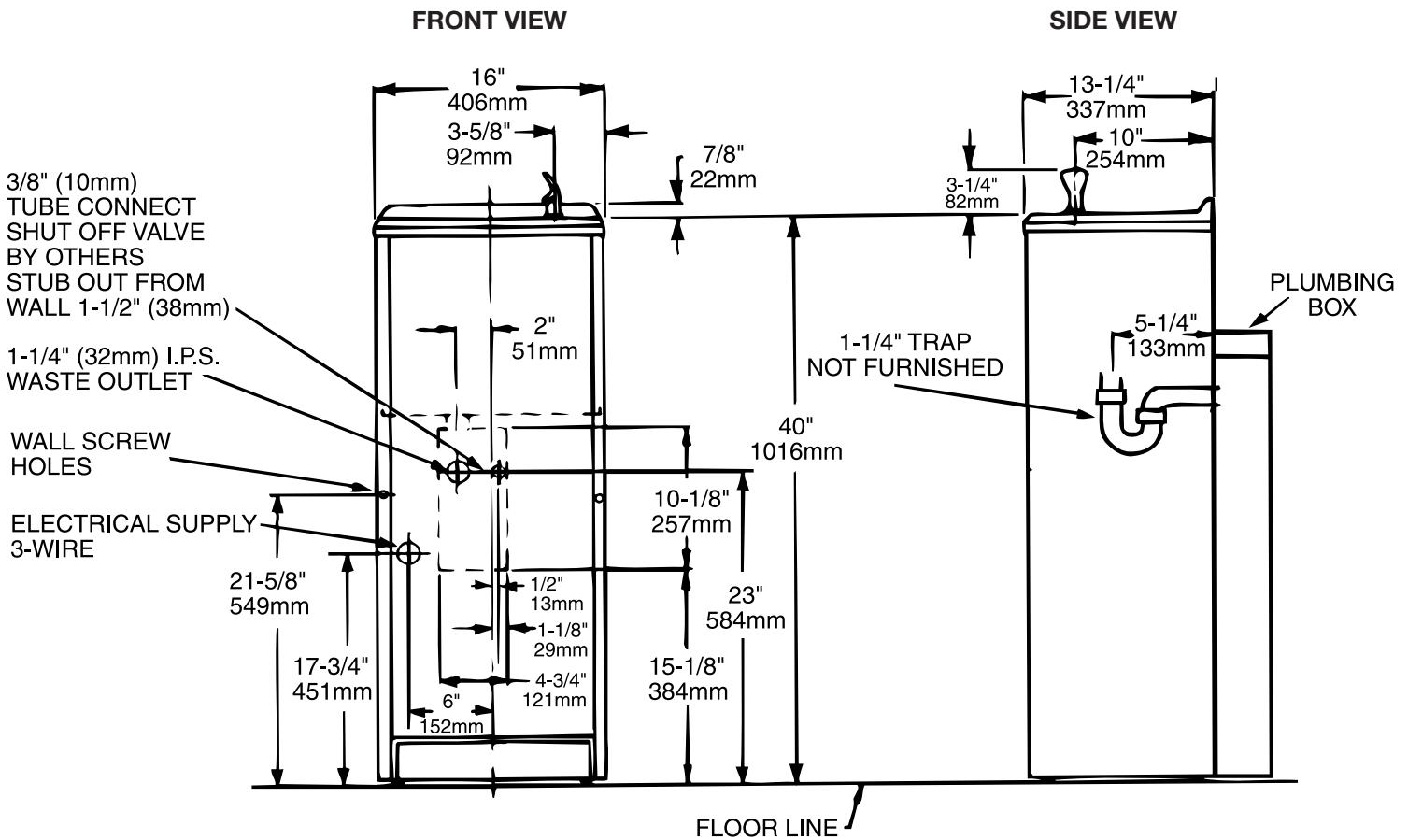
Trap and service stop not included.

#### OPERATING PRESSURES:

Supply water - 105 psi maximum

#### ELECTRICAL

Standard 120 volt, 60 Hz, single phase.  
Requires 1/2" IPS rigid conduit into junction box  
inside cabinet (hole provided).



*Halsey Taylor*®