

3121FR

Pedestal Mounted Drinking Fountain



FEATURES & BENEFITS

Bubbler Head

Polished chrome-plated brass bubbler head features an integral basin shank for added strength, and is equipped with a shielded, anti-squirt orifice that provides a steady sanitary source of water.

Drain Clean-Out

Top-down access to the drain allows the fountain to be cleaned without taking the unit apart, which is ideal for outdoor settings that are high in drain-clogging sediment like leaves, garbage, and other debris.

All-Weather Capabilities

Fully engineered system with the pneumatic operated freeze-resistant valve installed below frost line to drain water to non-freezing depth allowing fountain to function year-round. Assembly can be lifted to surface and lowered back into casing for easy maintenance without disturbing the fountain.

Construction

Heavy-duty vibra-cast reinforced concrete construction with exposed aggregate finish provide a perfect addition to outside environments, along with a vandal-resistant access plate for added peace of mind. Stainless steel basin with a high-polished finish compliments almost any setting, and it also resists stains and corrosion.

Push Button

Polished chrome-plated push-button requires less than 5 lbs. to activate.



SPECIFICATIONS

Model 3121FR freeze-resistant square concrete pedestal drinking fountain shall include a polished stainless steel basin, polished chrome-plated brass push-button, polished chrome-plated brass vandal-resistant bubbler head protected by a hood extension, polished chrome-plated brass vandal-resistant waste strainer with top-down clean-out access, Portland Gray exposed aggregate concrete finish with wire reinforcement, integral mounting feet, vandal-resistant stainless steel access plate, and 1-1/4" O.D. tailpiece.

OPTIONS

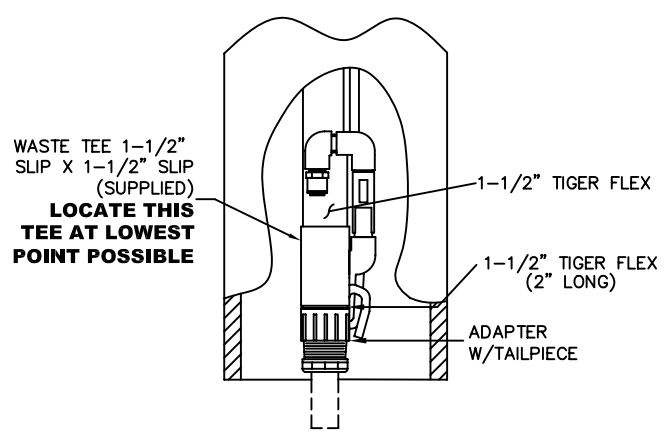
- Step: Model 6620, matching square concrete step for square concrete pedestals, 10" high.
- Valve Box: Model 6625, ground box with lid, used with freeze-resistant valve models 6518FR and 6518.2FR.
- Inlaid Tile: Special 2" x 2" tile may be provided or specified. Provide sample for special quotation.
- Concrete Colors: Haws offers the full palette of L.M. Scofield's integral admixtures as illustrated on the L.M. Scofield color chart and the choice of 4 different finishes. White cement is also available.

APPLICATIONS

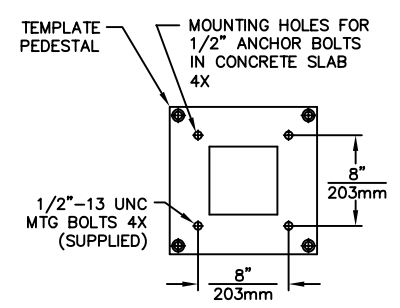
Perfect for either public or private settings, our concrete vibra-cast series is a great fit in "open-air" environments. Suitable in areas where weather conditions may be cause for concern, this series stands strong in harsh environments. Reinforced concrete vibra-cast design not only protects from corrosion, its Portland Gray color makes it recognizable enough to locate without compromising the outdoor atmosphere. This type of pedestal drinking fountain may also be placed in a variety of settings such as: parks, schools, and other recreational outdoor environments where the temperature may drop into freezing conditions.

Haws manufactures drinking fountains, electric water coolers and electric drinking fountains to be lead-free by all known definitions including ANSI/NSF Standard 61, Section 9, California Proposition 65, and the Federal Safe Drinking Water Act.

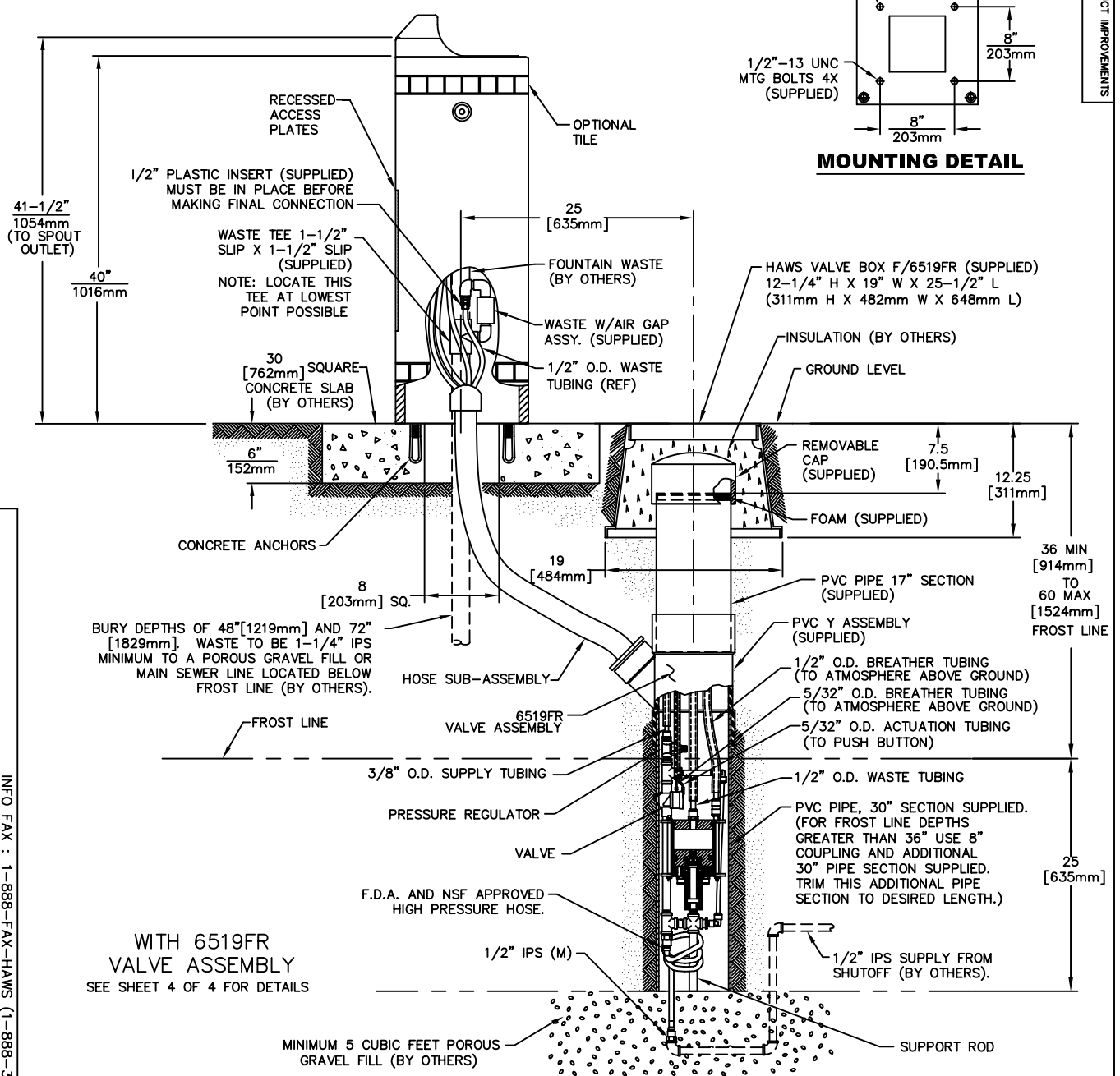




WASTE W/AIR GAP ASSY. DETAIL



MOUNTING DETAIL



WITH 6519FR VALVE ASSEMBLY
SEE SHEET 4 OF 4 FOR DETAILS

Haws Corporation	
REG. NO. 3121FR/3121 DATE 02/13/06 APPROVER: [Signature]	MODEL(S): 3121FR/3121 INFO FAX DOC # 2312137/23121628/23121937 DRAWING TYPE: INSTALLATION/FAUCET
PHONE: 775-359-4712 FAX: 775-359-7424 Haws 49 Buchweg Haws Mfg. Pk. Ltd 74 Sungei Kodut Loop Singapore 729531 e-MAIL: Haws@hawsco.com website: www.hawsco.com	INFO FAX : 1-888-FAX-HAWS (1-888-329-4297) 1455 Kiappa Ln, Sparks NV, 89431 Phone: 775-359-4712 Fax: 775-359-7424 Haws 49 Buchweg Haws Mfg. Pk. Ltd 74 Sungei Kodut Loop Singapore 729531 e-MAIL: Haws@hawsco.com website: www.hawsco.com
DATE: 02/13/06 SIZE: A SHEET: 3 OF 4	DATE: 02/13/06 SIZE: A SHEET: 3 OF 4



INSTALLATION, OPERATION & MAINTENANCE INSTRUCTIONS

1455 Kleppe Lane ♦ Sparks, NV 89431-6467 ♦ (775) 359-4712 ♦ Fax (775) 359-7424
HAWS AG ♦ Bachweg 3 ♦ CH-3401 Burgdorf ♦ Switzerland
Haws Mfg. Pte Lt. ♦ 2A Sungei Kadet Drive ♦ Singapore 729554
Avlis-Avenida Senador, Testonio Vilela ♦ 505 Jardim Aeroporto ♦ Itu, S.P. 13304-550 ♦ Brasil
E-mail: haws@hawsco.com ♦ website: www.hawsco.com

No.2077064 (6)

Model 3121FR/3121.6280FR/3121.6519FR Drinking Fountain

NOTE TO INSTALLER: Please leave this information with the Maintenance Department.

LIMITED WARRANTY

HAWS® warrants that all of its products are guaranteed against defective material or poor workmanship for a period of **one year from date of shipment**. HAWS liability under this warranty shall be discharged by furnishing without charge F.O.B. HAWS Factory any goods, or part thereof, which shall appear to the Company upon inspection to be of defective material or not of first class workmanship, provided that claim is made in writing to company within a reasonable period after receipt of the product. Where claims for defects are made, the defective part or parts shall be delivered to the Company, prepaid, for inspection. HAWS will not be liable for the cost of repairs, alterations or replacements, or for any expense connected therewith made by the owner or his agents, except upon written authority from HAWS, Sparks, Nevada. HAWS will not be liable for any damages caused by defective materials or poor workmanship, except for replacements, as provided above. Buyer agrees that Haws has made no other warranties either expressed or implied in addition to those above stated, except that of title with respect to any of the products or equipment sold hereunder and that HAWS shall not be liable for general, special, or consequential damages claimed to arise under the contract of sale. The drinking fountain manufactured by HAWS is warranted to function if installation and maintenance instructions provided are adhered to. The units also must be used for the purpose for which they were intended.

NO OTHER WARRANTIES EXPRESSED OR IMPLIED ARE AUTHORIZED, PROVIDED OR GIVEN BY HAWS.

SHOULD YOU EXPERIENCE DIFFICULTY WITH THE INSTALLATION OF THIS MODEL, PLEASE CALL:

1-800-766-5612

FOR PARTS CALL:

1-800-758-9378

**(U.S.A. AND CANADA ONLY) MONDAY-THURSDAY: 6:00 A.M. – 4:00 P.M. PST
FRIDAY: 6:00 A.M – 1:00 P.M. PST**

RECOMMENDED TOOLS: Hack saw, pipe joint sealant, screwdriver, level, 12" adjustable wrench, 10" pipe wrench, 5/64" hex key wrench, 9/16", 1/2", 7/16" socket wrench or open end wrench.

LOCATION OF UNIT: When installing Model 3121FR/3121.6280FR/3121.6519FR Drinking Fountain, local, state or federal codes should be adhered to. If height other than shown is required, then dimensions must be adjusted accordingly.

SUPPLY LINE: The minimum recommended line size is 1/2"IPS. Flowing pressure is 30-90 psi (2-6 ATM) for Models 3121FR and 3121.6280FR. Flowing pressure for Model 3121.6519FR is 45-90 psi (3-6 ATM). Where sediment or mineral content is a problem, an inlet filter is recommended.

PLUMBING CONNECTIONS: Waste outlet is 1-1/4" IPS.

MAINTENANCE: Periodically clean the strainer. Refer to 6518FR/6518.2FR/6519FR Operation and Maintenance Sheet for additional information.

TROUBLESHOOTING 3121FR

PROBLEM	REPAIR CHECKLIST
1. Insufficient bubbler flow.	1a. Check that inlet screwdriver stop valve is wide open. (Customer supplied). Turn counterclockwise. b. Verify minimum 30psi flowing supply pressure. c. Adjust valve to increase flow. See 6518FR Valve Manual.

TROUBLESHOOTING 3121.6280FR

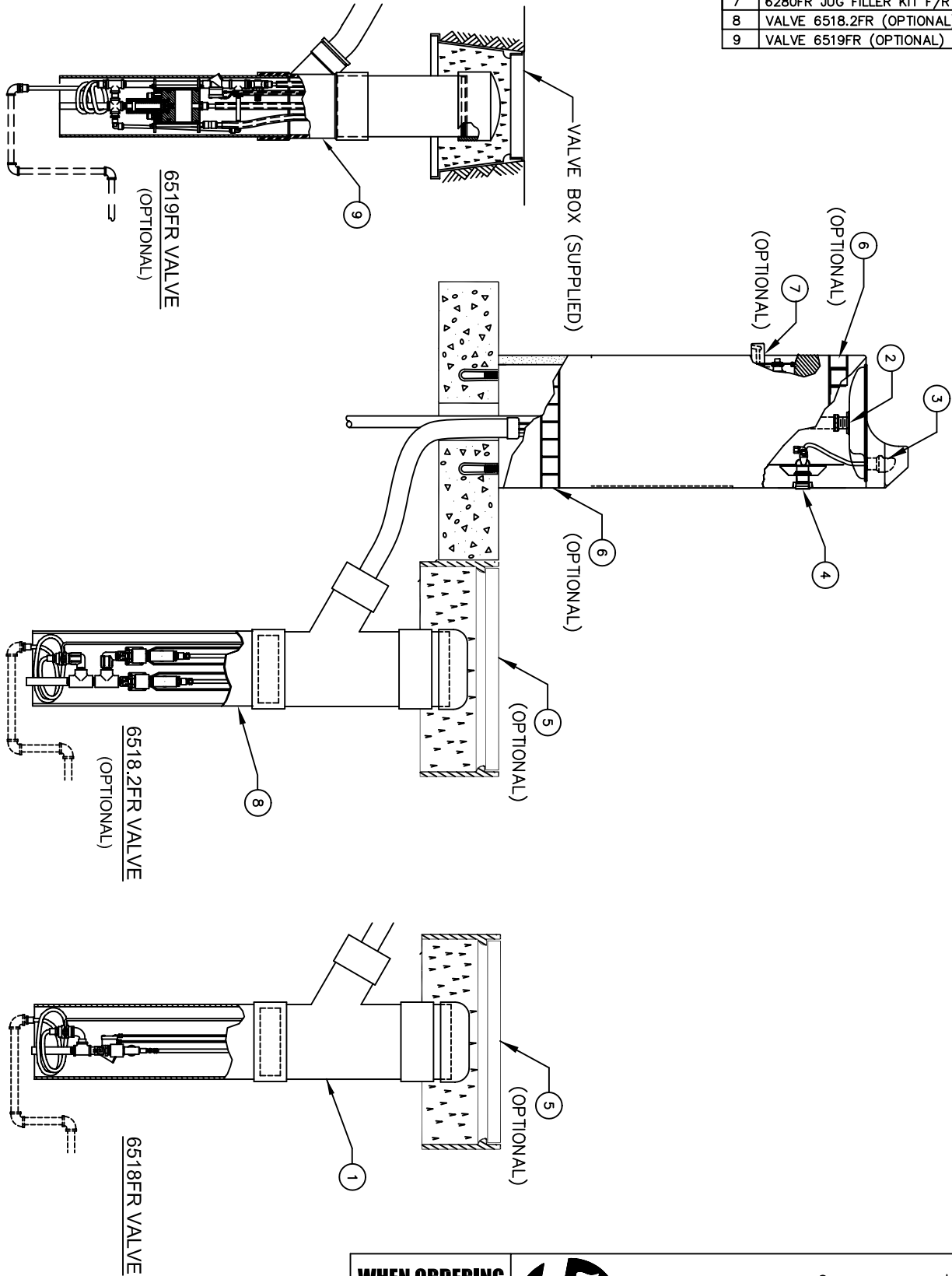
PROBLEM	REPAIR CHECKLIST
1. Insufficient bubbler flow.	1a. Check that inlet screwdriver stop valve is wide open. (Customer supplied). Turn counterclockwise. b. Verify minimum 30psi flowing supply pressure. c. Adjust valve to increase flow. See 6518.2FR Valve Manual.

TROUBLESHOOTING 3121.6519FR

PROBLEM	REPAIR CHECKLIST
1. Insufficient bubbler flow.	1a. Check that inlet screwdriver stop valve is wide open. (Customer supplied). Turn counterclockwise. b. Verify minimum 45psi flowing supply pressure. c. Adjust valve to increase flow. See 6519FR Valve Manual.

PARTS BREAKDOWN

ITEM	DESCRIPTION
1	VALVE 6518FR
2	STRAINER ASSY 6466
3	BUBBLER HEAD 5703M
4	PUSH BTN ASS'Y 5881PBA
5	VALVE BOX 6625 (OPTIONAL)
6	TILE (OPTIONAL)
7	6280FR JUG FILLER KIT F/R (OPTIONAL)
8	VALVE 6518.2FR (OPTIONAL)
9	VALVE 6519FR (OPTIONAL)

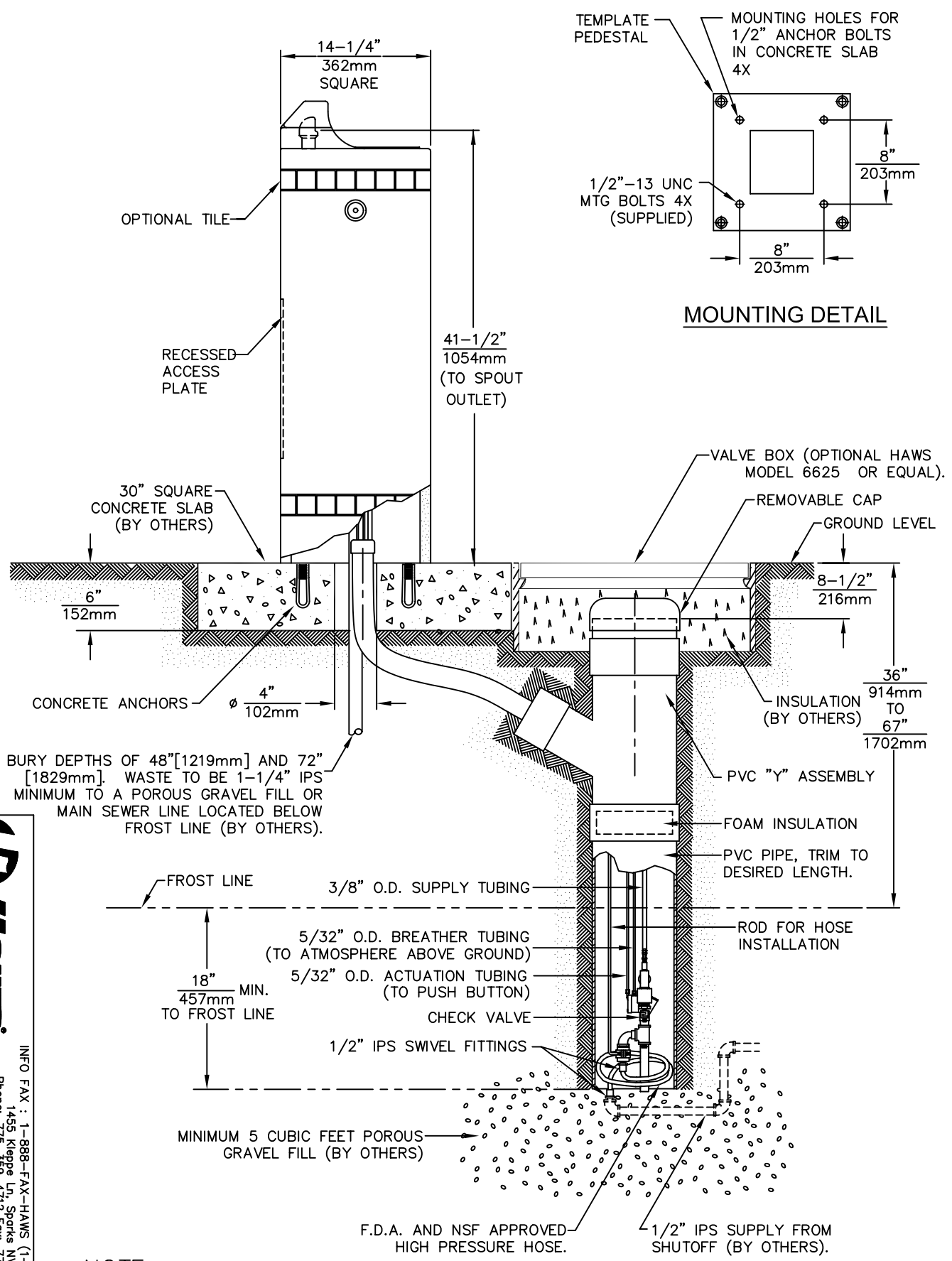


WHEN ORDERING PARTS PLEASE SPECIFY YOUR MODEL NUMBER



1455 KLEPPE LANE SPARKS, NEVADA
 BACHWEG 3 CH3401 BURGDORF SWITZERLAND

DRAWN BY: D. OLLOM	DATE: 11/25/95	CHECK BY:	APP'D BY:	SCALE: 1/8
TITLE: 3121FR/3121.6280FR/3121.6519FR			PART NUMBER: 0002077064	
DRAWING TYPE: PARTS BREAKDOWN			DRAWING NUMBER: 12807C00	REV: 6



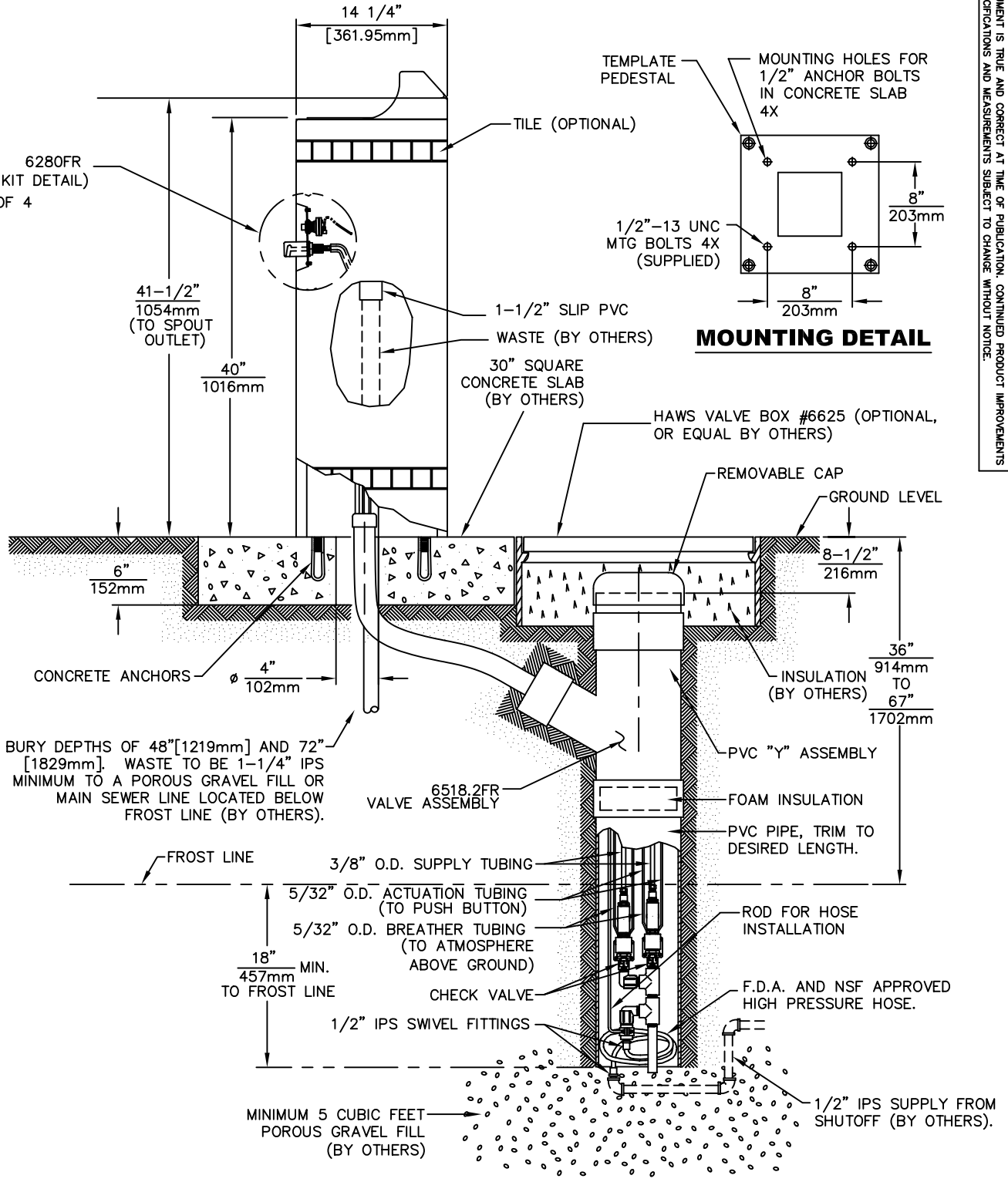
BURY DEPTHS OF 48" [1219mm] AND 72" [1829mm]. WASTE TO BE 1-1/4" IPS MINIMUM TO A POROUS GRAVEL FILL OR MAIN SEWER LINE LOCATED BELOW FROST LINE (BY OTHERS).

NOTE:

1. SEE SHEET 2 OF 4 FOR UNIT CONFIGURED WITH 6280FR JUG FILLER KIT.
2. SEE SHEET 3 OF 4 FOR UNIT CONFIGURED WITH 6519FR FREEZE VALVE.

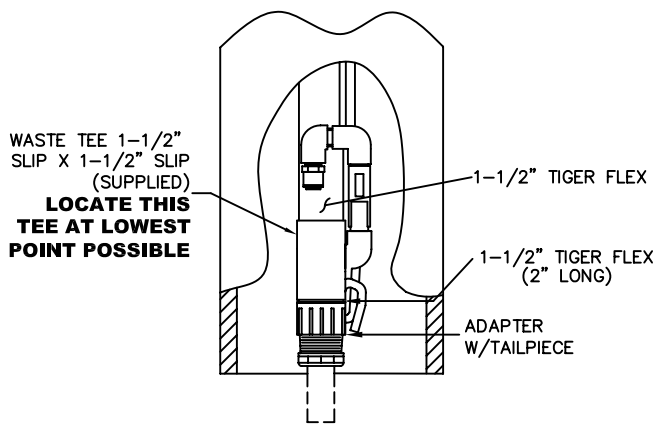
WITH 6518FR VALVE ASSEMBLY
SEE SHEET 4 OF 4 FOR DETAILS

	<p>INFO FAX : 1-888-FAX-HAWS (1-888-329-4297)</p> <p>1455 Kieppa Ln, Sparks, NV, 89431 Phone: 775-359-4712 Fax: 775-359-7424 Haws Ag Building 3 CH-3401 Burgdorf Switzerland Haws Ming Pte Ltd 74 Sungai Kodut Loop Singapore 729531 e-trail: Haws@hawsco.com website: www.hawsco.com</p>
<p>ORDER NO. 7064.D DATE 10/31/00 REV. 6</p>	<p>MODEL(S): 3121FR/3121 6280FR/3121 6519FR INFO FAX DOC # 2312137/23121628/23121937 SCALE: 1/32" = 1"</p>
<p>DATE 9/28/92 DRAWN ECH: SAZ/S CHECKED: [blank] APPROVED: [blank]</p>	<p>DESIGN TYPE: INSTALLATION/FAUCET</p>

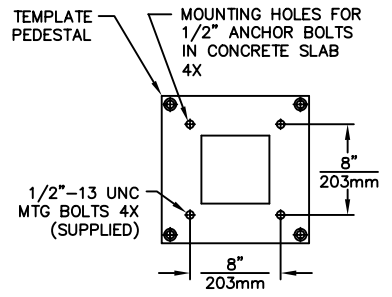


WITH 6518.2FR VALVE ASSEMBLY
SEE SHEET 4 OF 4 FOR DETAILS

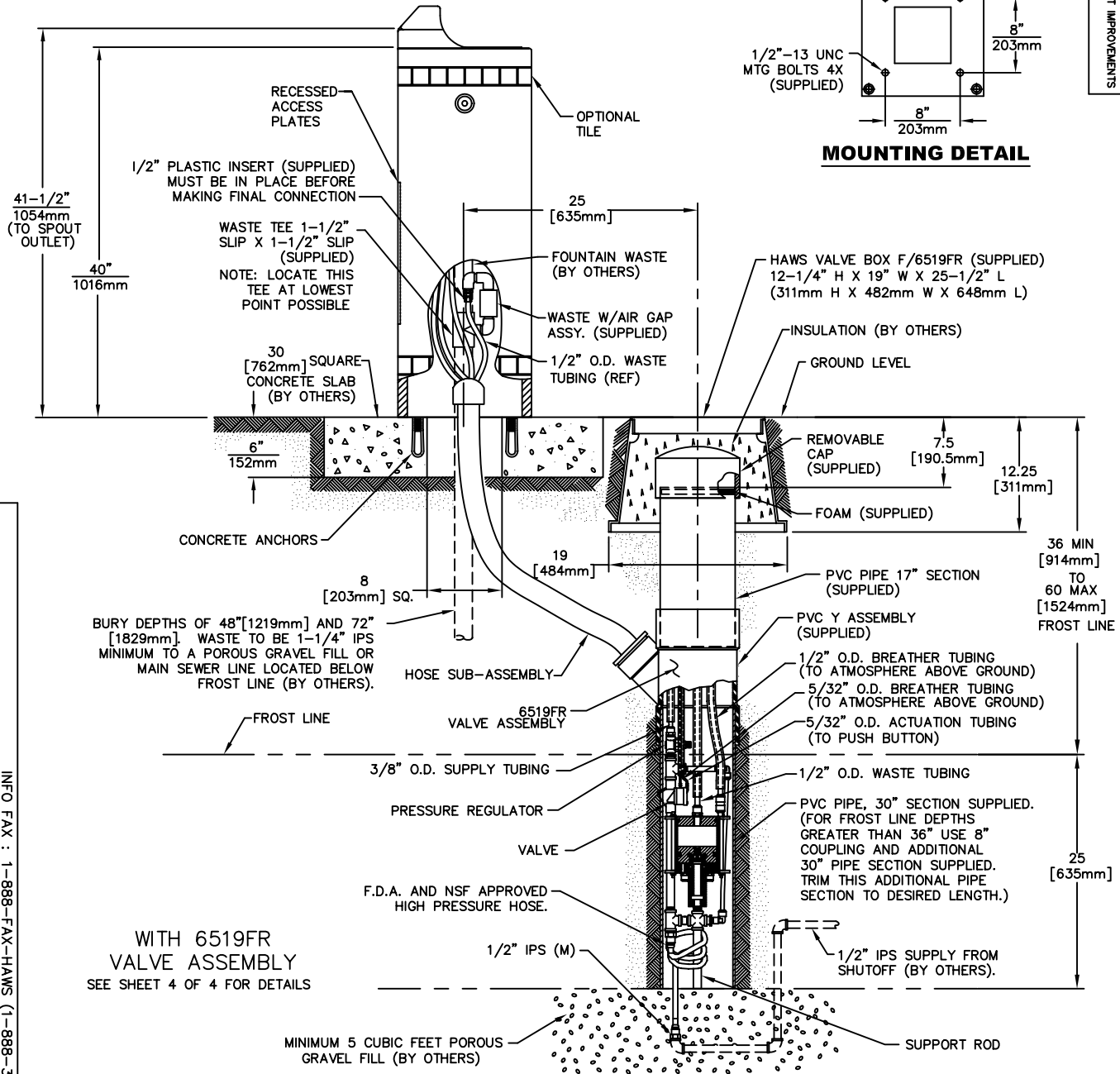
	<p>INFO FAX : 1-888-FAX-HAWS (1-888-329-4297)</p> <p>1455 Kiappa Ln, Sparks, NV, 89431 Phone: 775-359-4712 Fax: 775-359-7424</p> <p>Haws AG, Burgdorf, Switzerland Haws Pte Ltd, Singapore Haws Pty Ltd, Australia Haws (UK) Ltd, UK Haws (India) Pvt. Ltd, India Haws (China) Co. Ltd, China Haws (South Africa) Pty. Ltd, South Africa Haws (Brazil) Ltda, Brazil Haws (Mexico) S de RL, Mexico Haws (Canada) Inc, Canada Haws (New Zealand) Ltd, New Zealand Haws (Japan) Co. Ltd, Japan Haws (Korea) Co. Ltd, Korea Haws (Taiwan) Co. Ltd, Taiwan Haws (Thailand) Co. Ltd, Thailand Haws (Vietnam) Co. Ltd, Vietnam Haws (Philippines) Co. Ltd, Philippines Haws (Indonesia) Co. Ltd, Indonesia Haws (Malaysia) Co. Ltd, Malaysia Haws (Singapore) Co. Ltd, Singapore Haws (Hong Kong) Co. Ltd, Hong Kong Haws (Australia) Co. Ltd, Australia Haws (New Zealand) Co. Ltd, New Zealand Haws (Japan) Co. Ltd, Japan Haws (Korea) Co. Ltd, Korea Haws (Taiwan) Co. Ltd, Taiwan Haws (Thailand) Co. Ltd, Thailand Haws (Vietnam) Co. Ltd, Vietnam Haws (Philippines) Co. Ltd, Philippines Haws (Indonesia) Co. Ltd, Indonesia Haws (Malaysia) Co. Ltd, Malaysia Haws (Singapore) Co. Ltd, Singapore Haws (Hong Kong) Co. Ltd, Hong Kong</p>
<p>MODEL(S): 3121FR/3121 6280FR/3121 6519FR</p> <p>INFO FAX DOC # 2312137/23121628/23121937</p>	<p>DATE: 02/13/06</p> <p>SCALE: 1:1</p> <p>DATE: 02/13/06</p> <p>SCALE: 1:1</p>
<p>DATE: 02/13/06</p> <p>SCALE: 1:1</p>	<p>DATE: 02/13/06</p> <p>SCALE: 1:1</p>



WASTE W/AIR GAP ASSY. DETAIL

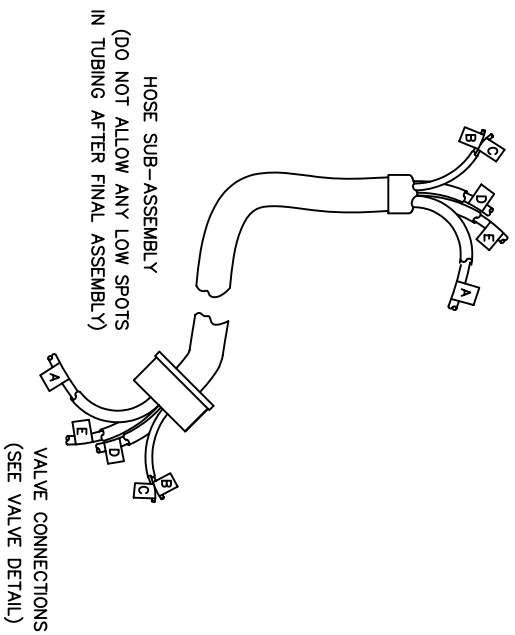


MOUNTING DETAIL



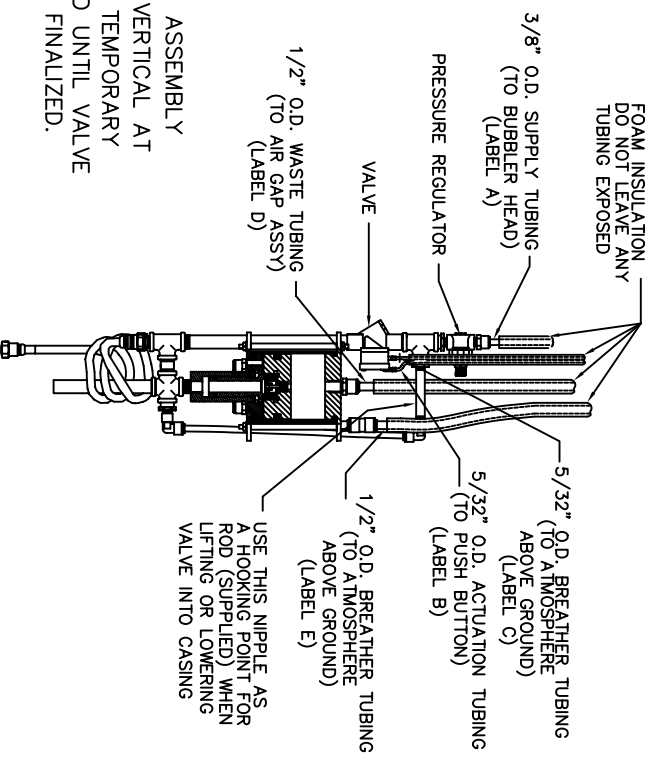
WITH 6519FR VALVE ASSEMBLY
SEE SHEET 4 OF 4 FOR DETAILS

Haws Corporation	
REG. NO. 3121FR/3121 DATE 02/13/06 APPROVER: [Signature]	MODEL(S): 3121FR/3121 6280FR/3121 6519FR INFO FAX DOC # 2312137/23121628/23121937 DRAWING TYPE: INSTALLATION/FAUCET
PHONE: 775-359-4712 FAX: 775-359-7424 Haws AG, Burgdorf, Switzerland Haws King, Pte Ltd, 74 Sungei Kadut Loop, Singapore 729531 e-MAIL: Haws@hawsco.com website: www.hawsco.com	INFO FAX: 1-888-FAX-HAWS (1-888-329-4297) 1455 Kiappa Ln, Sports Lv, 89431 Haws Corp, Las Vegas, NV 89131 Haws King, Pte Ltd, 74 Sungei Kadut Loop, Singapore 729531 e-MAIL: Haws@hawsco.com website: www.hawsco.com
DATE: 02/13/06 SIZE: A SHEET: 3 OF 4	DATE: 02/13/06 SIZE: A SHEET: 3 OF 4

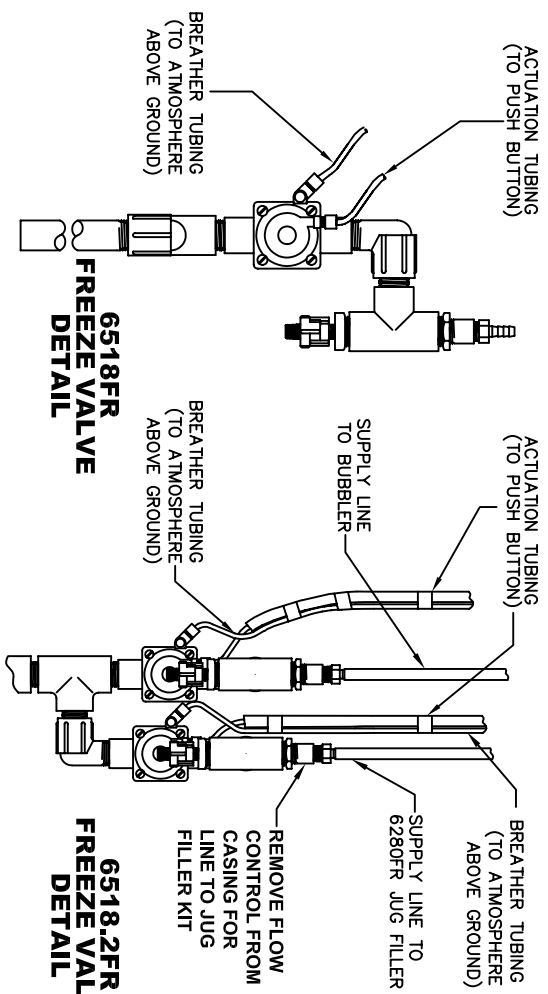


FOUNTAIN CONNECTIONS
(FOLLOW INSTRUCTIONS ON LABELS)

CAUTION: VALVE ASSEMBLY MUST BE KEPT VERTICAL AT ALL TIMES. USE TEMPORARY STAND PROVIDED UNTIL VALVE INSTALLATION IS FINALIZED.

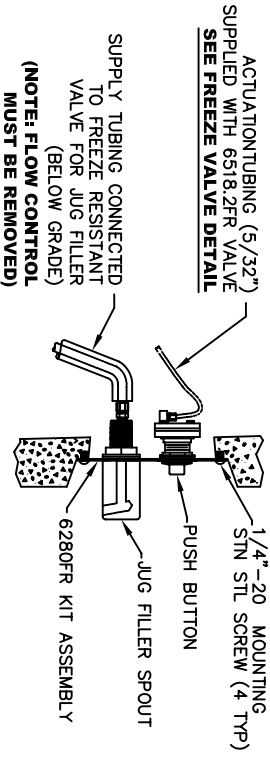


6519FR FREEZE VALVE DETAIL
(3 WAY DIVIDER W/TUBING AT BASE NOT SHOWN FOR CLARITY)



6518FR FREEZE VALVE DETAIL

6518.2FR FREEZE VALVE DETAIL



6280FR JUG FILLER KIT DETAIL

Haws Corporation

INFO FAX : 1-888-FAX-HAWS (1-888-329-4297)

1455 Kiappa Ln, Sparks NV, 89431
Phone: 775-359-4712 Fax: 775-359-7424
Haws Ag Building 3, CH-3401, Burgdorf, Switzerland
Haws Mfg Pte Ltd 74 Sungei Kodat Loop Singapore 729531
e-MAIL: Haws@hawsco.com Website: www.hawsco.com

REG. NO.	REG. DATE	REG. EXPIRES	MODEL(S):
ECN: 3478	02/13/06		3121FR/3121 6280FR/3121 6519FR
DATE	CHECKED	SCALE:	INFO FAX DOC # 2312137/23121628/23121937
02/13/06		1:2	
APPROVED:	DATE:	TRAINING TYPE:	INSTALLATION/REPAIR

SIZE: A | SHEET: 4 OF 4