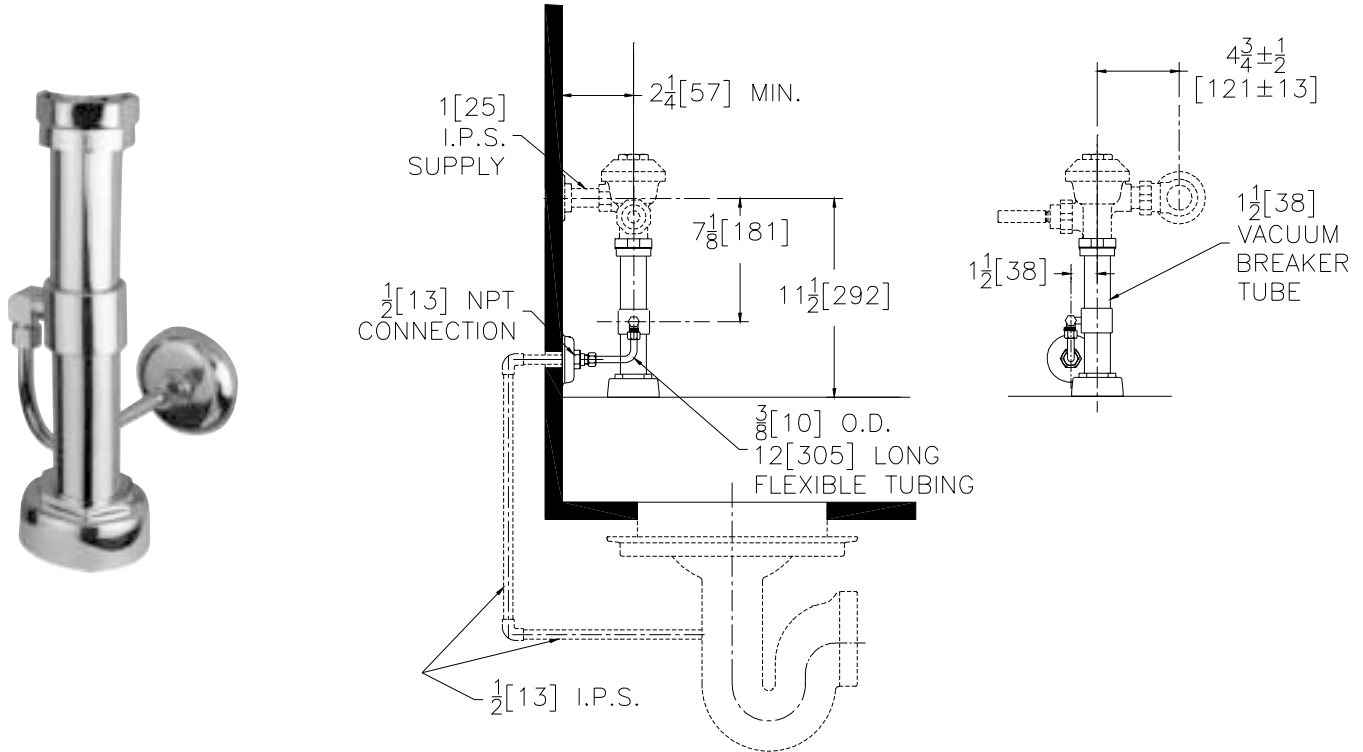




Aquaflush®

TAG _____

Exposed P6000-TPO Model Trap Primer Assembly



Flow Options

Suffix Options (Check/Specify Appropriate Options)

- _____ -YH One Wall Bumper
- _____ -YJ Split Ring Pipe Support
- _____ -YK Solid Ring Pipe Support
- _____ -YL Solid Ring Pipe Support with Bumper
- _____ -YN Bumper on Flush Pipe
- _____ Other

ENGINEERING SPECIFICATION: ZURN P6000-TPO Aquaflush Trap Primer Assembly- The Aquaflush trap primer elbow assembly provides a source of water to maintain a constant water seal in floor drains preventing sewer gases from entering a specific area. During each flush valve actuation, a small amount of water is diverted to the floor drain to help maintain the water seal. The Trap Primer Assembly is furnished complete with 1-1/2"[38] flush tube with trap primer collar, spud coupling and flange for top spud connection, 3/8" x 12" supply tube and fittings, vacuum breaker, vacuum breaker tube nut and wall escutcheon.

| Product No. | A | | B | |
|----------------------------|--------|-----|--------|-----|
| | In. | MM | In. | MM |
| P6000-TPO | 11 1/2 | 292 | 7 1/8 | 181 |
| P6000-1-TPO | 16 | 406 | 11 3/8 | 289 |
| P6000-2-TPO | 24 | 610 | | |
| P6000-3-TPO | 27 | 686 | | |
| Longer Lengths As Speified | | | | |

This space is for Architectural/engineering Approval

ZURN INDUSTRIES, INC. ♦ COMMERCIAL BRASS OPERATION ♦ 5900 ELWIN BUCHANAN DRIVE ♦ SANFORD NC 27330

Phone: 1-800-997-3876 ♦ Fax: 919-775-3541 ♦ World Wide Web: www.zurn.com

In Canada: ZURN INDUSTRIES LIMITED ♦ 3544 Nashua Drive ♦ Mississauga, Ontario L4V1L2 ♦ Phone: 905-405-8272 Fax: 905-405-1292