

CHICAGO FAUCETS 

a Geberit company

2100 South Clearwater Drive
Des Plaines, IL 60018
Phone: 847-803-5000
Fax: 847-803-5454
www.chicagofaucets.com

FOR TECHNICAL ASSISTANCE
1-800-TEC-TRUE (1-800-832-8783)

REPAIR PARTS

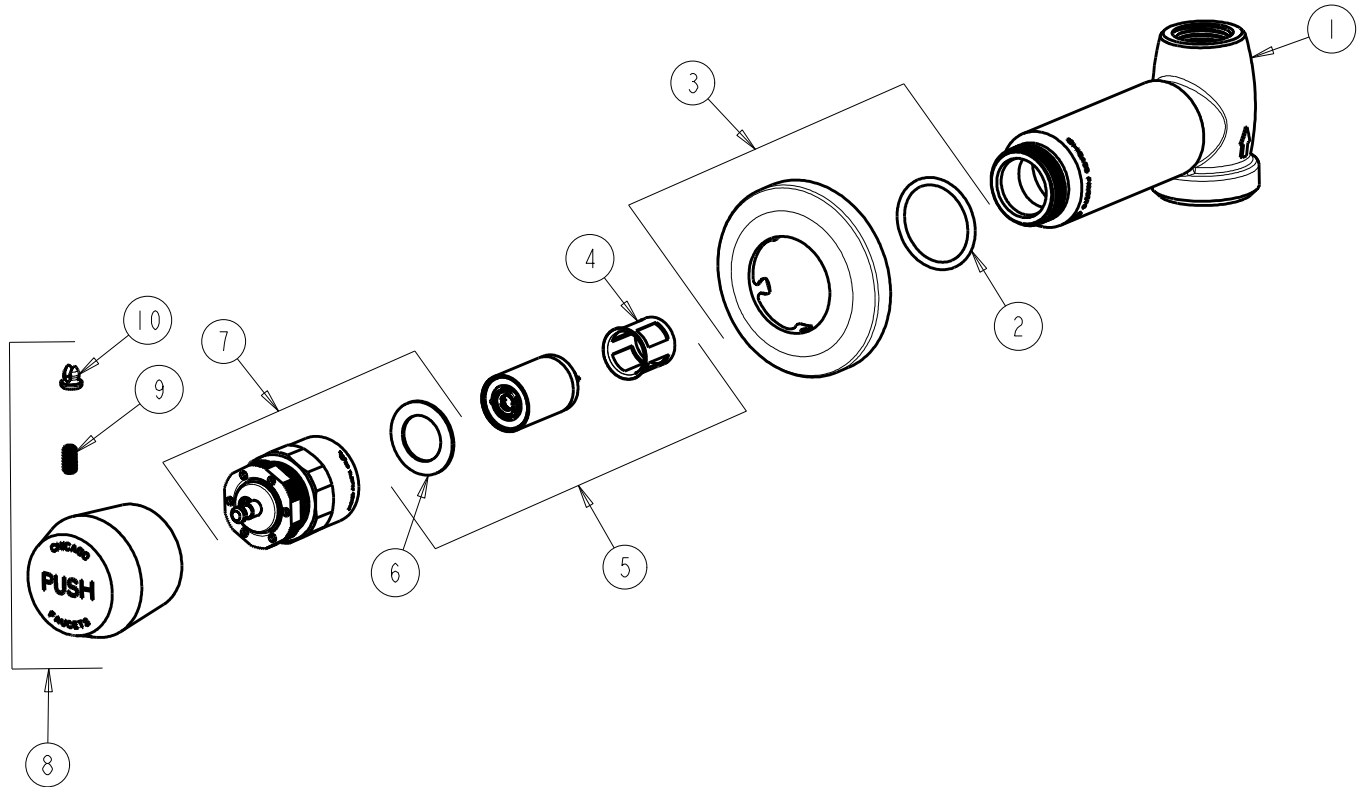
BY: SID DATE: 12-05-16
CHK: *AR* REV:

FITTING NO.

770-665PSHCP

SUBMITTED MODEL NO.

ITEM NO.



ITEM	PART NO.	DESCRIPTION
1	-----	VALVE BODY (NOT SODL SEPARATELY)
2	5235-107JKNF	O-RING
3	633-201JKCP	FLANGE & O-RING
4	667-402JKABNF	MVP FILTER
5	671-XJKABNF	METERING VALVE CARTRIDGE
6	665-011JKABNF	WASHER, SEALING
7	665-190KJKABNF	ACTUATOR ASSEMBLY
8	665-PSHJKCP	HANDLE, PUSH CAP
9	665-116JKNF	SET SCREW
10	665-309KJKNF	BUTTONS, HOT AND COLD