



Aquaflush[®] TPE Chemical and Clog Resistant Diaphragm P6000-ER15

Upgrades both Sloan
and Zurn flush valves.

FLOW RING



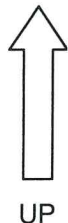
BLACK
1.0 Gpf Urinal
w/black trip



WHITE
1.6 Gpf Closet
w/white trip



YELLOW
3.5 Gpf Closet w/white trip
1.5 Gpf Urinal w/black trip



Trip Mechanism
P6000-EU13 (Black)
or
P6000-EC13 (White)

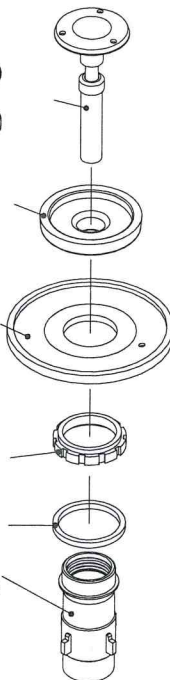
Diaphragm Disc
(P6000-E14)

Diaphragm
(P6000-ER15)

Flow Ring

Guide Ring

Guide



The P6000-ER15 diaphragm is complete with one Zurn Aquaflush TPE chemical and clog resistant diaphragm and three color-coded flow rings.

*Black = 1.0 Gpf Urinal
White = 1.6 Gpf Closet
Yellow = 3.5 Gpf Closet, 1.5 Urinal*

To Upgrade your existing flush valve:

1. Dis-assemble the existing diaphragm kit by unscrewing the diaphragm disc from the Guide Assembly.
2. Discard the old diaphragm and flow ring.
3. Determine the flush volume of the fixture and then choose the appropriate flow ring to accommodate the new diaphragm to complete the upgrade (P6000-ER15). **See reverse for instructions.**
4. Replace the discarded flow ring with one of the three new flow rings.
5. Replace the diaphragm with the new Zurn P6000-ER15 TPE diaphragm.
6. Examine the diaphragm disc and trip mechanism to make sure they are not degraded or damaged, and are free of debris. (If needed, replace with new parts.)
7. Re-assemble the kit, making sure the assembly is tight. Wrapping the guide with a cloth or rag to hold the assembly will aid in tightening.

NOTE: Be sure to assemble flow ring on guide in the position shown above.