

PROWRAP[®]



SEAMLESS INSULATORS

Beyond A.D.A.

ANNOUNCING PARTICIPATION IN:



Value
Alliance
Club[™]

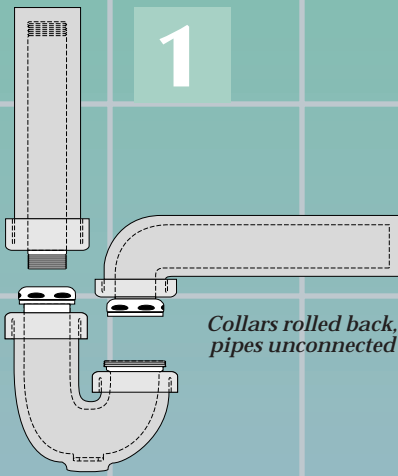
CHECK OUR WEBSITE FOR MORE
INFORMATION
www.mcguiremfg.com



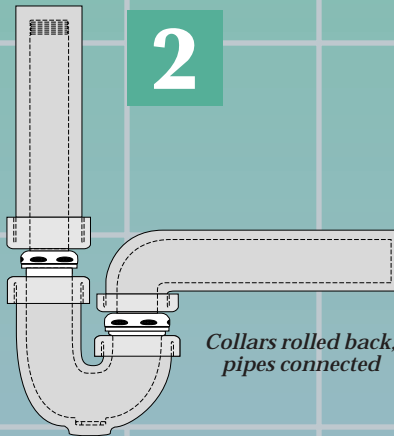
*The premium quality
seamless lavatory
insulator made of*

ANTI-MICROBIAL

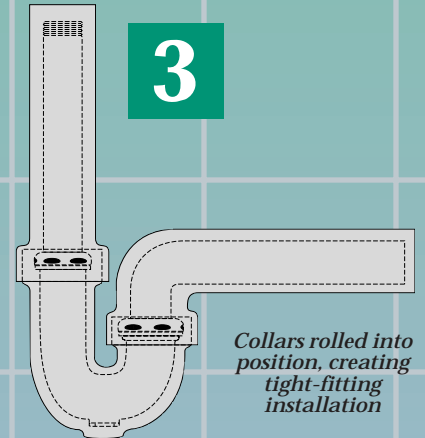
PVC Resin



*Collars rolled back,
pipes unconnected*



*Collars rolled back,
pipes connected*



*Collars rolled into
position, creating
tight-fitting
installation*

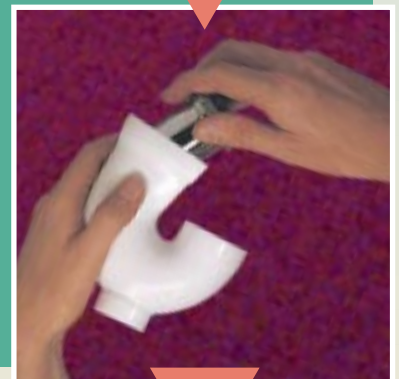
ProWrap's flexible seamless cover slides easily over an existing P-trap assembly for minimal installation time (with no fasteners) and greater security against vandalism.

For new installations, ProWrap is available pre-installed on genuine McGuire P-traps allowing even faster installation time.

ProWrap's patented seamless construction eliminates internal areas where germ and bacterial growth could develop. Surface areas will remain virtually bacteria and fungus free because ProWrap is formulated with an anti-microbial additive.

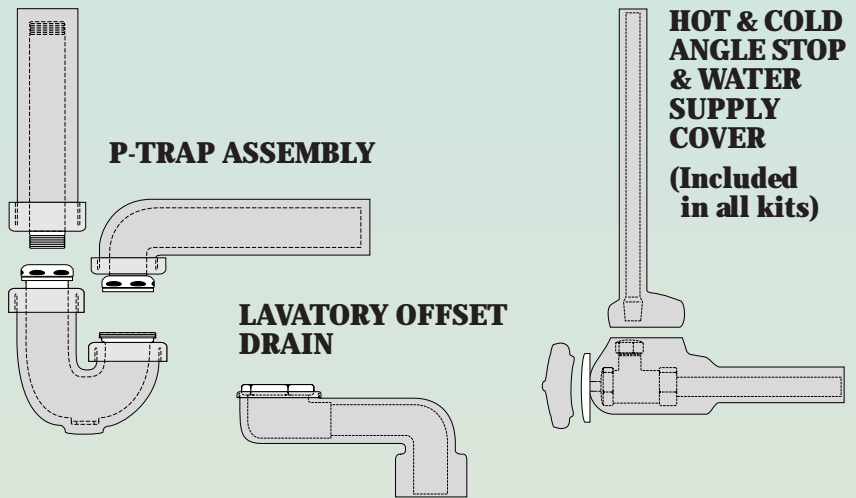
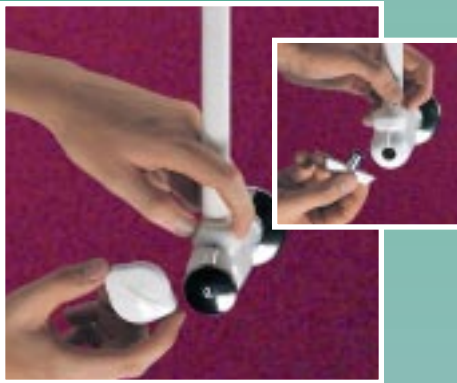
ANTI-MICROBIAL

NOW wrapping exposed lavatory piping in an easy, cost effective and aesthetic way is possible. McGuire's patented ProWrap® goes beyond A.D.A. requirements, and outperforms all other lavatory insulators. Only ProWrap® cushions pipe surfaces and provides resistance to heat transfer **without** unattractive and inconvenient seams and fasteners. ProWrap® is seamless, giving lavatory piping an attractive, uniform surface.



Servicing the P-Traps

ProWrap® is the only brand that allows access to the nut structures holding the P-trap assembly together without removing insulation or disconnecting fasteners. No time or inconvenience is spent locating replacement fasteners after the trap is serviced. Supply valves are insulated and accessible for fast shut off.



ProWrap® Part Numbers

PW 2000

Retrofit kit includes covers for trap, tail piece, wall bend and 2 supply covers.

PW 2000 WC

Retrofit kit includes cover for lavatory offset drain and all of the covers listed in PW 2000.

PW 2125

Includes pre-wrapped 1 1/4" cast brass J-Bend, pre-wrapped 1 1/4" x 8 1/2" wall bend (17GA), tail piece cover, 2 supply covers, and a chrome plated flange.

PW 2125 WC

Includes pre-wrapped McGuire lavatory offset drain and all of the items listed in PW 2125.

PW 2150

Includes pre-wrapped 1 1/2" cast brass J-Bend, pre-wrapped 1 1/2" x 9" wall bend (17GA), tail piece cover, 2 supply covers, and a chrome plated flange. Please specify 1 1/4" or 1 1/2" inlet slip nut.

PW 2150 WC

Includes pre-wrapped McGuire lavatory offset drain, 1 1/4" reducing brass slip nut, and all of the items listed in PW 2150.

PW WC

Includes cover for lavatory offset drain only.

PW 155 WC

Includes pre-wrapped McGuire lavatory offset drain only.

PROWRAP®

MADE IN USA
US PATENT NUMBERS:

5,341,830	5,586,568
5,904,175	5,911,237
5,795,623	5,678,598



McGuire Manufacturing Co., Inc.

60 Grandview Court ♦ P.O. Box 746 ♦ Cheshire, CT 06410 ♦ Phone: (203) 699-1801 ♦ Fax: (203) 699-1813

www.mcguiremfg.com

Installation

ProWrap® requires less time because its seamless construction eliminates threading and trimming fasteners.

Vandal Resistance

By mirroring p-trap assembly parts, ProWrap® appears to be an integral part of the P-trap assembly, thus reducing the temptation for tampering. With no fasteners to cut or tear, removal appears impossible.

Maintenance

The seamless construction of ProWrap® limits the source for germ and bacterial growth to develop. An anti-microbial additive further limits growth of bacteria that cause mold and mildew stains and odors (ASTM tested G21-G22). Common cleaning agents are acceptable for routine cleaning.

Compliance with A.D.A. Regulations

ProWrap® goes beyond A.D.A. requirements. It is formulated with a customized PVC resin to cushion pipes as well as provide resistance to thermal transfer (see ASTM test results). ProWrap® is formulated to be virtually bacteria-free.

NOTE: ProWrap® is available as a retrofit kit or with pre-insulated p-trap assemblies.

Product Specifications

MATERIAL... Molded closed cell vinyl

NOMINAL WALL... 3/16 inch

FASTENERS... None required

EXCEPTION: Angle Supply requires a tie

SEAMS... None

EXCEPTION: Angle Supply requires a seam due to installation method

DUROMETER... 70 shore A

COLOR... Satin white

BURNING CHARACTERISTICS...

ASTM D 635: Less than 5 sec (ATB) 10mm (AEB)

HEAT RESISTANCE...

ASTM C 177: BTU - in/hr - ft² - °F K Value = 1.02

FUNGAL RESISTANCE...

ASTM G-21: (Rating*) 0 fungal growth measured

ASTM G-22: (Rating*) 0 bacterial growth measured

*ASTM Rating - Observed Growth on Specimens

- 0 None
- 1 Traces of Growth (less than 10%)
- 2 Light Growth (10-30%)
- 3 Medium Growth (30-60%)
- 4 Heavy Growth (60%-complete coverage)

Environmental Controls:

Paper - 4, Cork - 1, Cotton - 4, Glass - 0

Class I or Class II ozone depleting substances are not used in any process of manufacturing for McGuire ProWrap®.

