

SENSORFLO®

Surgeon Scrub Sink Faucets

GENERAL SPECIFICATION

Sensorflo electronic valve assembly for use on surgical scrub sink. Polished stainless steel construction. Solenoid with built-in filter. Drain assembly with 1-1/2" O.D. tailpiece. UL/CSA approved transformer 120 VAC to 12 VDC with waterproof connectors.

S-8500



□ S-8500

For use on single source tempered water system, stainless steel braided supply hose with 3/8" compression swivel female connectors.

S-8510



□ S-8510

Under counter mixing valve with stainless steel braided supply hoses.

S-8520



□ S-8520

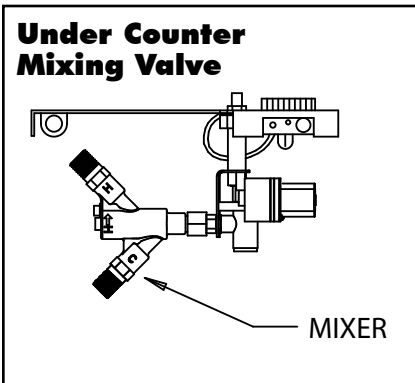
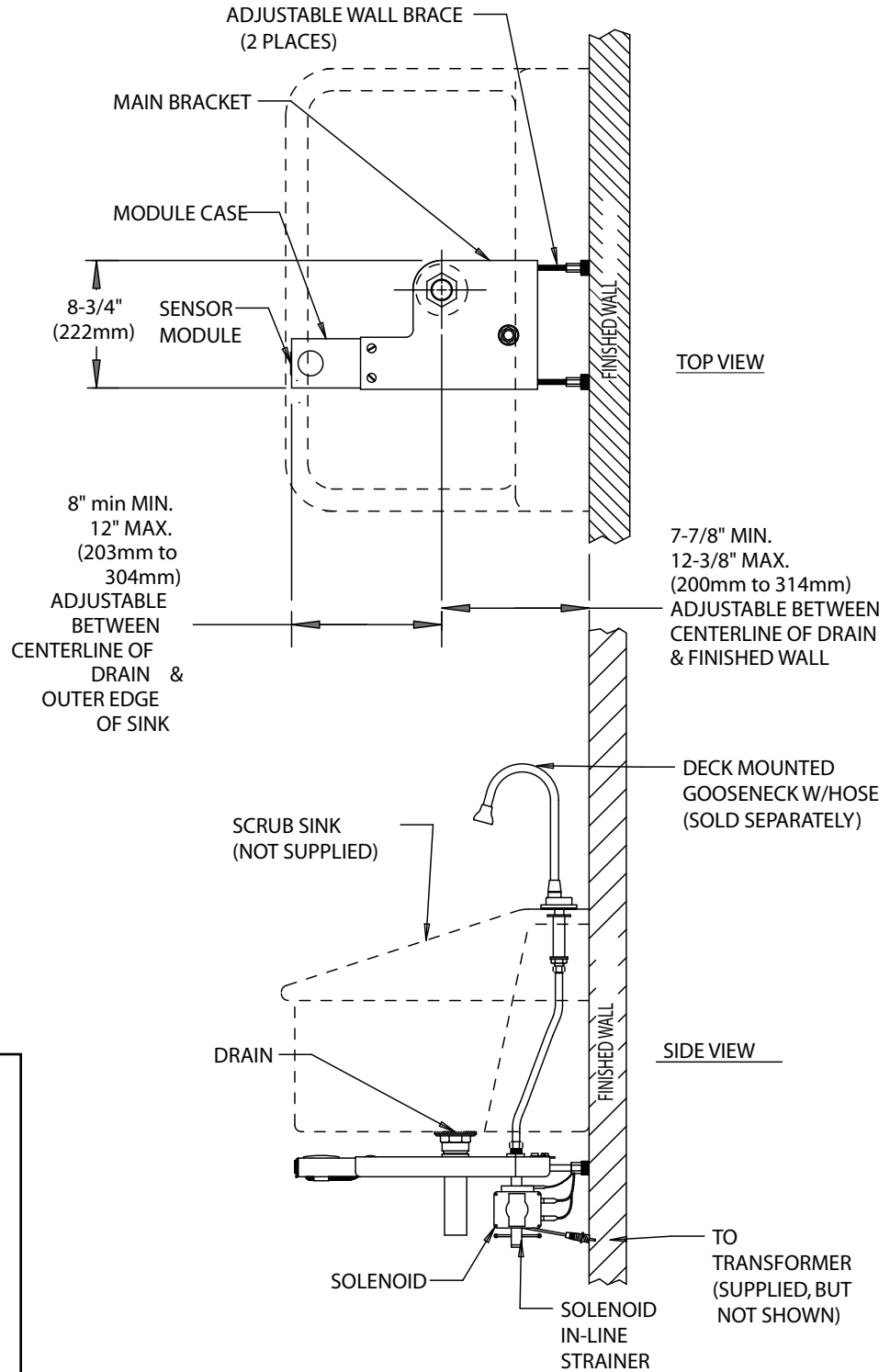
Above-counter hot/cold mixer with 8" chrome plated deck plate. Stainless steel braided supply hoses.

This space for Architect/Engineer approval.



Rough-Ins

S-8500
S-8510
S-8520



NOTE: All dimensions are in inches unless otherwise specified and are subject to change without notice. All hose inlets are 3/8 compression with female threads.