

COMMANDER® HEALTHCARE Bedpan Washer

SC-3242



GENERAL SPECIFICATION

Concealed chrome plated Commander bedpan washer. 1/4 turn ceramic cartridges covered by a 25-year warranty. Integral stops. Vandal-resistant four arm handles with color-coded indexes. Brass supply ell with wall flange. Brass inline vacuum breaker. Insulated handle. Spray outlet and wall hook. Reversible couplings for 1/2" sweat or NPTF inlet.

SC-3242

Complete bedpan washer

S-3245

69" hose assembly only, with chrome plated spray outlet

OPTIONS FOR SC-3242 ONLY

SUFFIX	DESCRIPTION
<input type="checkbox"/> EVB	Elevated vacuum breaker replaces IVB
<input type="checkbox"/> SCV	Self-closing valve on handle

S-3245

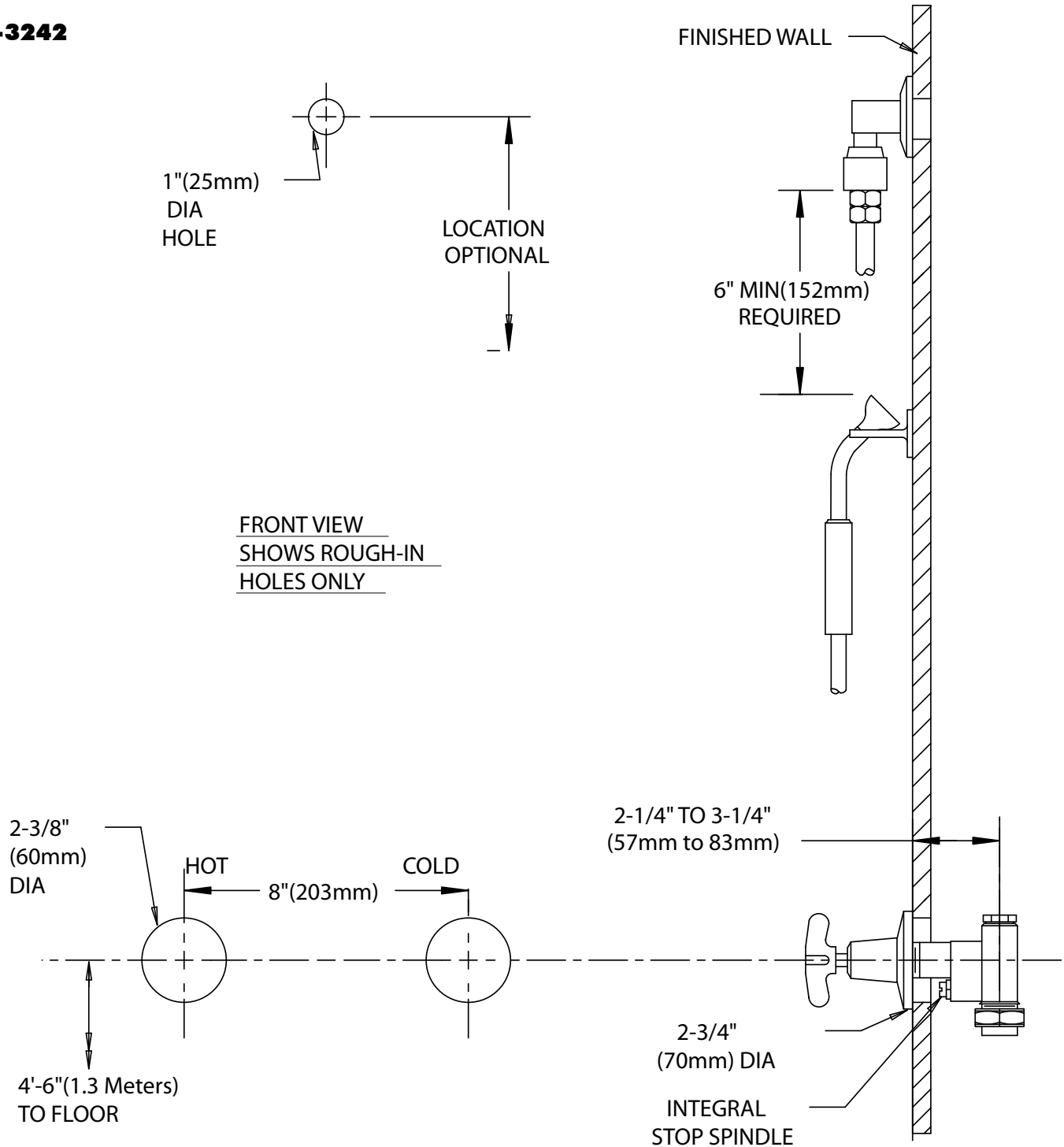


This space for Architect/Engineer approval.



ROUGH-INS

SC-3242



NOTE: Inlets and outlet are 1/2" NPTF. Location of wall hook is optional, but restricted by 69" hose length running from supply ell to insulated handle. All dimensions are in inches unless otherwise specified and are subject to change without notice.