

SENTINEL MARK II®

SM-3400



Anti-Scald Balanced Pressure Valve

GENERAL SPECIFICATION

Sentinel Mark II concealed anti-scald balanced pressure valve with integral volume control/diverter and integral stops. Chrome plated brass wall plate with metal index. Chrome plated brass lever handle. Independent center sleeve allows up to 1" of rough-in variation. Adjustable temperature limit stop. Brass body. Pressure balancing and ceramic temperature regulating cartridge with built-in check valves. Can be installed back-to-back. Roughing-in template. Vandal-resistant standard. Four port valve with 1/2" female copper sweat inlets and shower outlet. 1/2" female NPT tub outlet. Furnished with 1/2" pipe plug. Meets ASSE 1016 & ASME 112.18.1/CSA B125.1.

SM-4400



SM-3400

Anti-scald balanced pressure valve with integral volume control/diverter and integral stops.

SM-4400

Anti-scald balanced pressure valve with integral volume control/diverter and integral stops, with decorative etched metal index.

SM-4401

Anti-scald balanced pressure valve with integral volume control/diverter and integral stops, with decorative etched metal index, with Reverse handle.

SM-4401



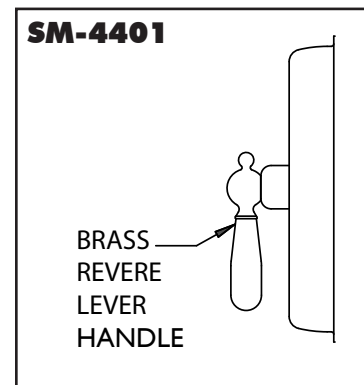
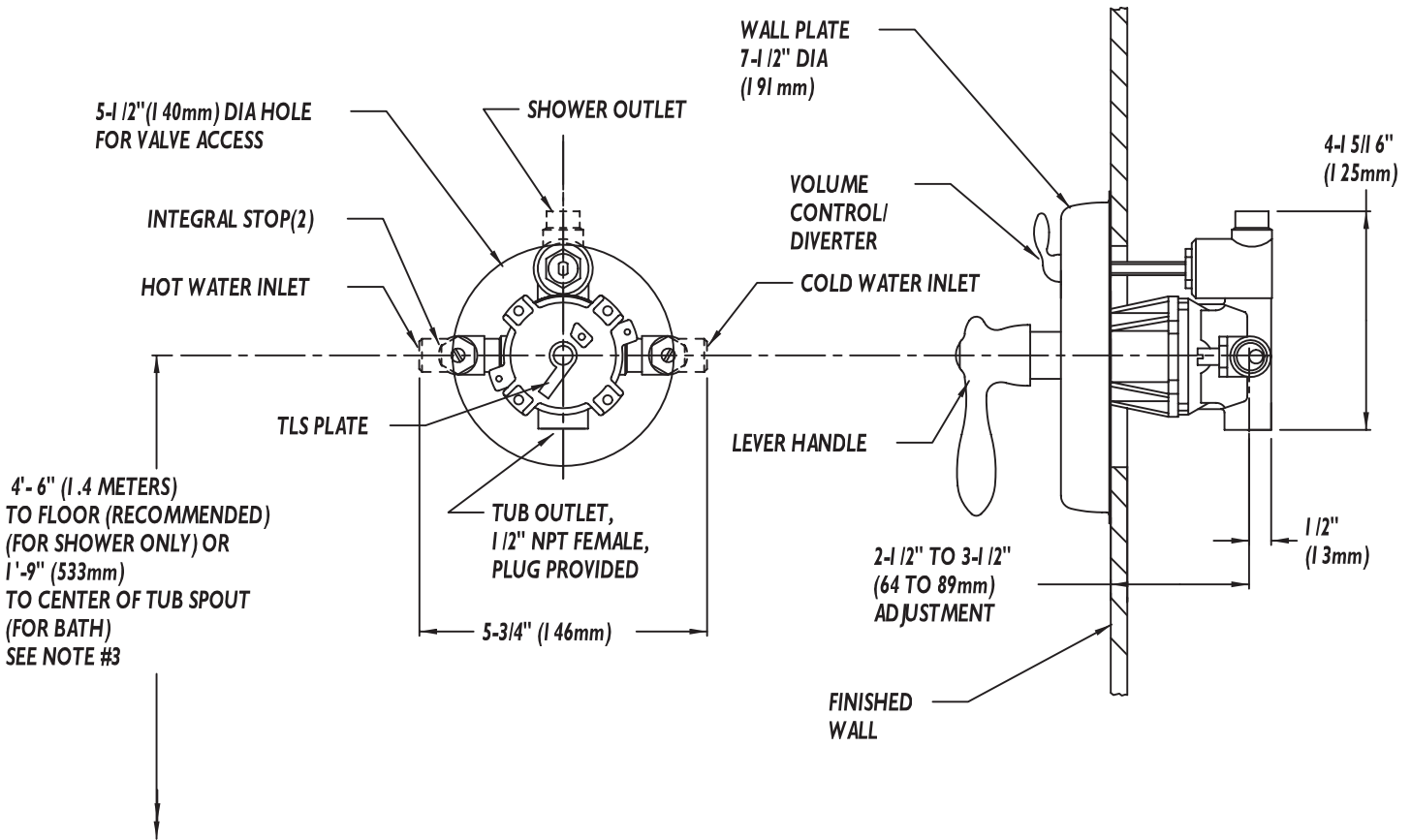
Contractor packs available upon request.

This space for Architect/Engineer approval.



Rough-Ins

SM-3400
SM-4400



NOTE: All dimensions are in inches(millimeters) unless otherwise specified and are subject to change without notice. Unless otherwise specified all inlets and outlets are 1/2" female copper sweat. For ADA mounting locations consult ADAAG, ANSI A117.1, or state regulations.