

HEALTHCARE

S-3231



Bedpan Washer

GENERAL SPECIFICATION

Chrome plated brass bedpan washer combination. Polished chrome plated brass wall mounted double pedal self-closing mixing valve. Renewable operating units. 1/2" NPTF exposed inlets and outlet. Elevated vacuum breaker. Supply ell with 1/2" NPTF inlet and wall flange. 69" white vinyl reinforced hose. Insulated handle, spray outlet and wall hook.

S-3231

Bedpan washer combination.

OPTIONS

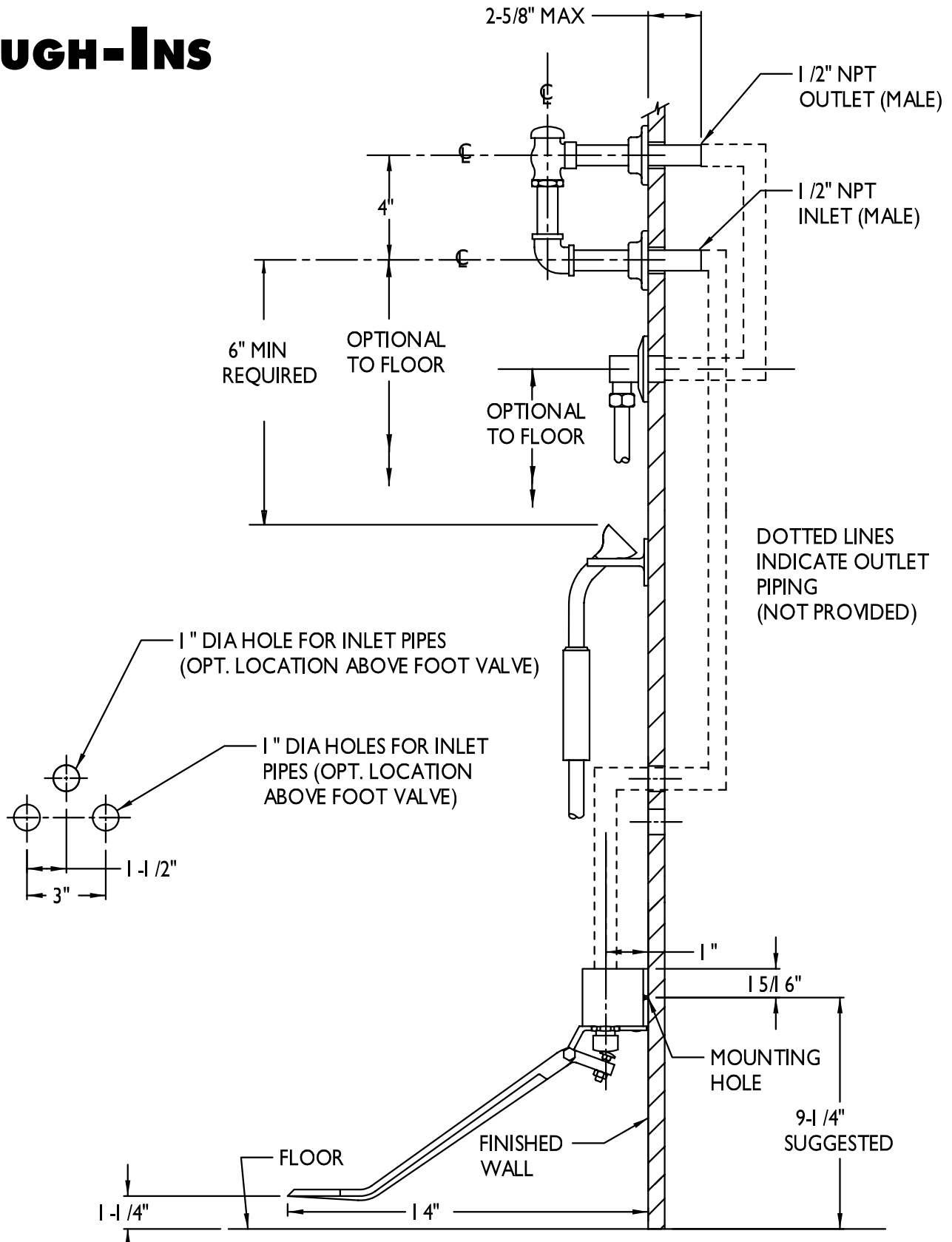
SUFFIX	DESCRIPTION
<input type="checkbox"/> IVB	Inline vacuum breaker replaces EVB
<input type="checkbox"/> SCV	Self-closing valve on handle
<input type="checkbox"/> UAS	Keyed union angle stops
<input type="checkbox"/> USS	Keyed union separate stops

This space for Architect/Engineer approval.



ROUGH-INS

S-3231



NOTE: All inlets and outlets are 1/2" NPTF, unless otherwise indicated. Location of wall hook is optional, but restricted by 69" hose length running from supply ell to insulated handle. All dimensions are in inches unless otherwise specified and are subject to change without notice.