



**MODEL HTV8BLEE-MVP-Q**



This water cooler is certified to NSF/ANSI 61.

**GENERAL**

Self-contained, electric refrigerated wall-mounted bi-level water cooler with softly rounded corners and edges, designed to be easily accessible to physically challenged individuals. HTV8BLEE-MVP-Q has sensor-operated automatic actuation on lower wheelchair unit. The upper unit offers self-closing, light-touch push bars requiring minimal pressure to activate. When properly installed, unit meets state and federal requirements as defined by the Americans with Disabilities Act for **both children or adults**. Unit is certified to NSF/ANSI 61 and meets requirements of the Safe Drinking Water Act. Unit provides 50° F water at 80° F inlet water and 90° F ambient.

**LEAD REDUCTION FILTER**

Halsey Taylor Water Cooler With Filter is equipped with the Aqua Sentry HWF142 lead reduction system which is designed to remove cysts, such as cryptosporidium and giardia, lead particles and chlorine taste and odor. The filter has been tested to the following NSF International standards: NSF/ANSI Standards 42 Chlorine, and Taste and Odor. NSF/ANSI Standard 53 for Reduction of Lead and Cyst. Features include Quick-Disconnect fittings on each end of the in-line filter. The filter contains a carbon block with lead sorbent media and the housing is made of rust and corrosion free plastic. Filter should be replaced every 750 gallons (2839 liters) or approximately 6 months after installation. Use part number 56191C when ordering replacement filter.

**FILTER LIFE INDICATOR**

Filter Life Indicator records water usage and advises users when filter needs changing. The three light system helps maintain that the best filtered water is always available to users. Green=filter below 80% of capacity; Yellow=80%-90% of capacity; Red=Replace Filter.

**CABINET**

Molded two-tone gray space-age polymer with softly rounded edges. Resistant to impact, wear, corrosion, heat and sunlight.

**COOLER TOP**

Non-corrosive stainless steel cooler top, number 300 series with satin finish resists stains and corrosion and is easy to maintain. Anti-splash design reduces splatter. Contour design and integral strainer insure proper drainage.

**BUBBLER**

Exclusive one-piece, chrome-plated two-stream mound-building bubbler with non-removable anti-squirt feature and integral hood insures a satisfying drink of water.

**AUTOMATIC ACTUATION**

Model HTV8BLEE-MVP-Q features infra-red light beam emitting sensor and a solenoid valve. Upon interruption of the light beam, the sensor actuates the solenoid valve to flow water. User does not have to touch the water cooler to obtain a drink of water. The water

flow is automatically shut-off after 30 seconds or earlier if the user leaves the sensing range. Supplied with a built-in time delay to avoid nuisance actuation from passers-by.

**AUTOMATIC STREAM HEIGHT REGULATOR**

Self-closing assembly is located inside unit to prevent tampering. Unit resists corrosion and liming. A constant stream height is automatically maintained under line pressures that vary from 20 to 105 psi.

**SOLENOID VALVE / INLET STRAINER**

Self-closing solenoid valve includes easily cleaned in-line strainer that screens particles of 140 microns or larger before they enter the waterway.

**TEMPERATURE CONTROL**

Positive sensing thermostat for controlling temperature of storage tank water. Factory set at 50° F Adjustable ± 5° F.

**STORAGE TANK**

Stainless steel evaporator/storage tank for long life. Waterways are certified to NSF/ANSI 61, far exceeding the requirements of the Safe Drinking Water Act.

**REFRIGERATION SYSTEM**

Hermetically sealed, positive start compressor with lifetime lubrication and built-in overload protection, efficient capillary sizing, large capacity dryer-strainer, and self-lubricated fan cools copper/aluminum condenser. System uses R134A refrigerant. Protected by Halsey Taylor's Limited 5 Year Warranty.

**VENTILATION**

Insure proper ventilation by maintaining 6" (152mm) minimum clearance from cabinet louvers to wall.

**SUGGESTED SPECIFICATIONS**

Shall deliver 7.6 GPH of 50° F water at 90° F ambient and 80° F inlet water. Shall have stainless steel basin with integral drain strainer. Bubbler shall be two-stream, mound building type. Separate valve and automatic stream regulator shall be mounted within cabinet. Refrigeration system shall employ high efficiency, positive start compressor using R134A, evaporator tank with totally encapsulated insulation and be controlled by positive sensing thermostat. Shall have electronic eye water control for hands-free operation on lower wheelchair unit and push-bar water control on upper unit. Cooler shall comply with ANSI 117:1 and ADA for visual and motion disabilities.

The manufacturer shall certify the unit to meet the requirements of NSF/ANSI 61, and the Safe Drinking Water Act. Unit complies with ARI Standard 1010.

NOTE: Continued product improvement makes specifications subject to change without notice. See Halsey Taylor website for most current spec sheet.

**Electronic Eye Bi-Level Barrier-Free Cooler with Filter**



Standard finish is Two-Tone Gray Molded.

**Optional Accessories (extra cost)**

- Easy-Flex™ Bubbler
- Glass Filler (Factory installed only)
- Cane Touch Apron
- MLP200 In-Wall Support Carrier
- Vandal-Resistant Kit

**Optional Features:**

- Personalized Graphics  
(Contact your local representative)

JOB NAME: \_\_\_\_\_

\_\_\_\_\_

ENGINEER/CONTRACTOR NAME: \_\_\_\_\_

APPROVAL: \_\_\_\_\_

DATE: \_\_\_\_\_

**NOTE: Water will only flow from bubbler when unit has electrical connection.**

HTV-Q BARRIER-FREE SERIES								
Model No.	GPH Capacity Cooled to 50° F*				Base Rate Cap.	F.L. Amps	Shipping Weight lb.	Rated Watt Usage
	Ambient Air Temp							
	70°F	80°F	90°F†	100°F				
HTV8BLEE-MVP-Q	9.6	8.8	7.6	7.2	7.6	4.0	82	370

\* With projector service and tap water at 80° F

† UL listed and complies with ARI Standard 1010

Trap and service stop not included

halseytaylor.com

HALSEY TAYLOR, 2222 CAMDEN COURT, OAK BROOK, ILLINOIS 60523



# HTV8BLEE-MVP-Q

## Electronic Eye Bi-Level Barrier-Free Cooler With Filter

(CONTINUED)

### MOUNTING HEIGHT

Mounting height recommended 30 1/4" from basin to floor. May be mounted at any desired height. Check local codes.

### MOUNTING INSTRUCTIONS

Mount trap and install service stop to building supply line. Anchor hanger bracket securely to wall with six fasteners. To insure proper engaging of waste line into trap, centerline of trap must be 7" from wall face. Remove slip nut and gasket from trap and install on waste line tube. Hang cooler on bracket and engage waste line tube into trap inlet. Centerline height of waste outlet will vary from floor line depending on mounting height. Connect service stop to solenoid valve using 3/8" supply tube. Secure bottom of cooler to wall using holes provided.

Trap and service stop not included.

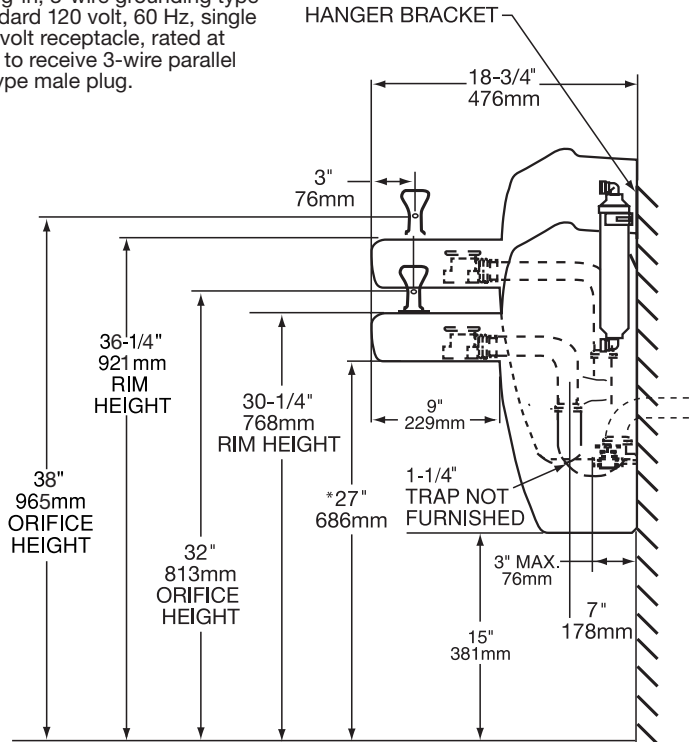
### OPERATING PRESSURES:

Supply water - 20 to 105 psi. In special circumstances where both sides of unit may be used simultaneously it is preferable to install two single filtered units to obtain adequate stream height regardless of pressure. Does not apply to non-refrigerated units.

### ELECTRICAL

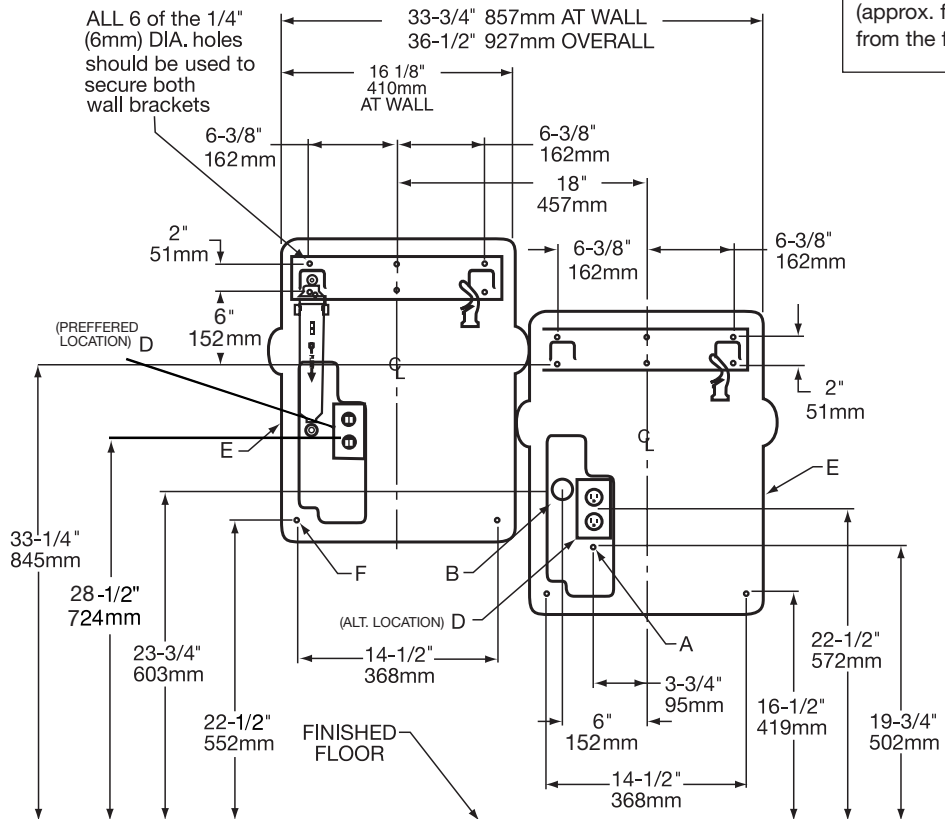
Furnished with plug-in, 3-wire grounding type service cord. Standard 120 volt, 60 Hz, single phase. Install 120-volt receptacle, rated at 15-amp minimum, to receive 3-wire parallel blade grounding type male plug.

### SIDE VIEW



\* Adult ADA requirement (shown) - 27" (686mm); Child ADA requirement - 24" (608mm). Adjust all other measurements accordingly.

### FRONT VIEW / WALL LAYOUT



NOTE: Halsey Taylor's recommended orifice mounting height for children 38" to 46" tall (approx. four through seven years old) is 23" from the finished floor.

### Legend:

- A = RECOMMENDED WATER SUPPLY LOCATION. SHUT OFF VALVE (NOT FURNISHED) TO ACCEPT 3/8" O.D. UNPLATED COPPER TUBE.
- B = RECOMMENDED LOCATION FOR WASTE OUTLET 1-1/2" O.D. DRAIN
- C = 1-1/2" TRAP NOT FURNISHED
- D = ELECTRICAL SUPPLY (3) WIRE RECESSED BOX (DUPLX REQUIRED)
- E = INSURE PROPER VENTILATION BY MAINTAINING 6" (152 mm) (MIN.) CLEARANCE FROM CABINET LOUVERS TO WALL
- F = 5/16" BOLT HOLES FOR FASTENING UNIT TO WALL

**Halsey Taylor**