

MODELS SC14FL and SC15FL (obsolete)

SC14FL and SC15FL PART LIST

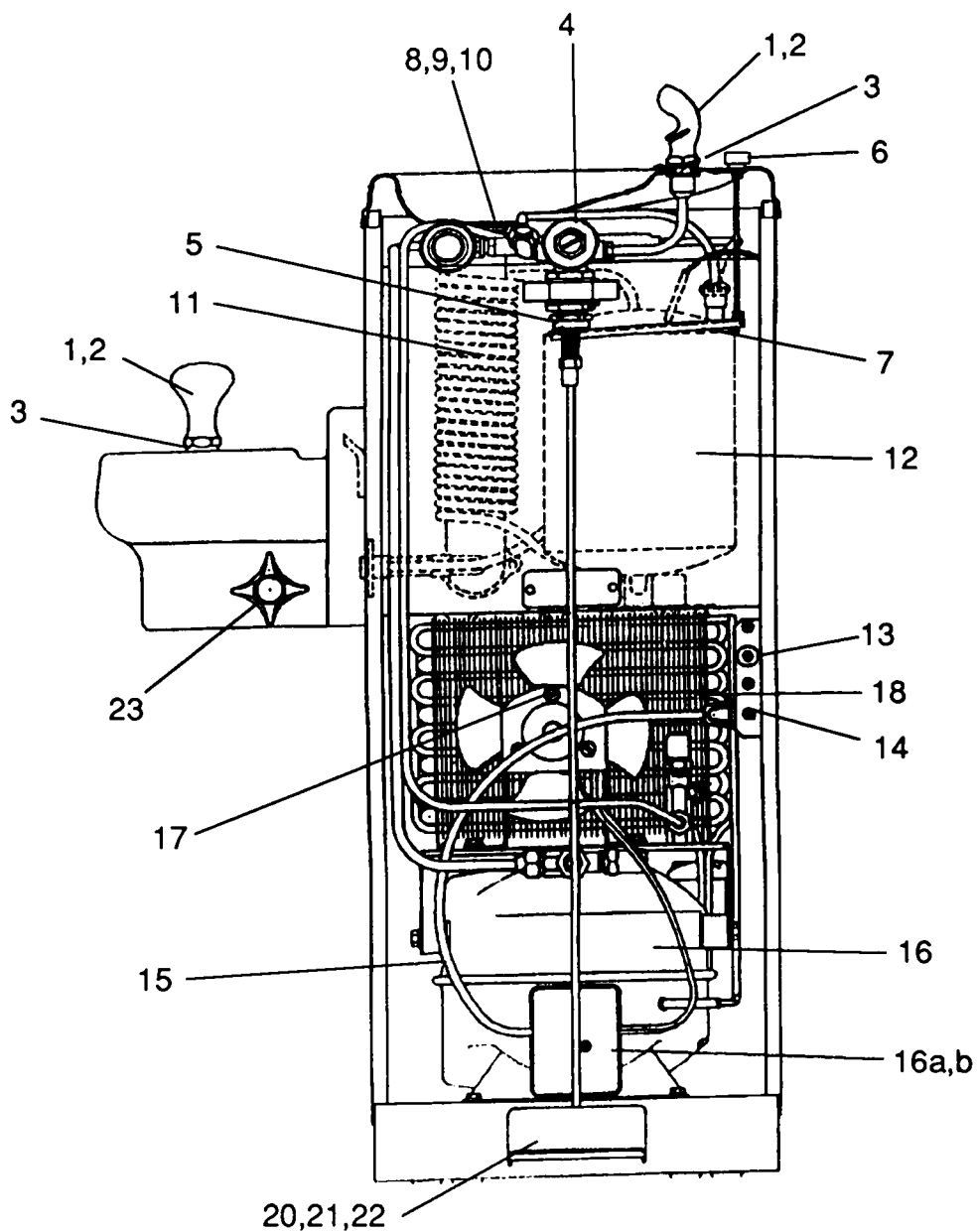
REF NO.	PART NUMBER	DESCRIPTION			Side
			SC14FL	SC15FL	Fountain
1	16-03165-08-640	Projector	X	X	X
2	10-03227-40-560	Projector Gasket (2 each)	X	X	X
3	16-06092-08-550	Projector Nipple	X	X	X
4	60-02596-51-550	Regulator*	X	X	
4a	60-08050-51-550	Diaphragm Repair Kit (for item 4)*	X	X	
5	60-08817-51-550	Stem Assembly*	X	X	
6	60-06429-51-550	Push Button Assembly*	X	X	
7	40-26741-43-730	Lever Arm	X	X	
8	16-16373-08-640	Drain Plug	X	X	X
9	16-02705-08-640	Strainer Plate	X	X	X
10	10-01471-40-560	Waste Gasket	X	X	X
11	NO LONGER AVAILABLE	Wasteline/Precooler	X	X	
12	NO LONGER AVAILABLE	Lowside	X	X	
13	19-42339-51-550	Primary Temperature Control	X	X	
14	19-15342-51-550	Secondary Temperature Control	X	X	
15	19-06802-01-920	Wiring Assembly		X	
16	60-08394-51-550	Compressor Assembly		X	
16	NO LONGER AVAILABLE	Compressor Assembly	X		
16a	19-07765-51-550	Relay (included in item 16)		X	
16a	NO LONGER AVAILABLE	Relay	X		
16b	19-07724-51-550	Overload (included in item 16)		X	
16b	NO LONGER AVAILABLE	Overload	X		
17	19-10019-51-550	Fan Motor Assembly		X	
17	NO LONGER AVAILABLE	Fan Motor Assembly	X		
17a	19-08417-04-550	Fan Blade		X	
17a	NO LONGER AVAILABLE	Fan Blade	X		
17b	41-0724-43-560	Fan Bracket		X	
17b	NO LONGER AVAILABLE	Fan Bracket	X		
18	NO LONGER AVAILABLE	Condenser	X	X	
19	16-06090-08-640	Glass Filler Plug (not shown)	X	X	
20	10-06312-42-700	Foot Pedal	X	X	
21	11-02075-43-890	Cotter Pin (2 each)	X	X	
22	11-02082-43-890	Foot Lever Pin (2 each)	X	X	
23	60-02889-51-640	Valve and Handle Assembly*			X
23a	60-02596-51-550	Regulator Assembly* (included in item 23)			X
23b	60-01128-51-640	Cross Handle Stem Assembly* (included in item 23)			X
23c	60-08050-51-550	Diaphragm Repair Kit* (for item 23a)			X
23d	60-08250-51-550	Stem Repair Kit* (for item 23b)			X

ALL OTHER PARTS NO LONGER AVAILABLE

XXX Please specify color when ordering. See Color Chart on page I-A for colors available.

*See Detailed Parts Section for further breakdown.

MODELS SC14FL and SC15FL (Obsolete)



To order parts, contact your nearest Halsey Taylor wholesaler or representative.

Continued product improvement makes specifications subject to change without notice.

Halsey Taylor.