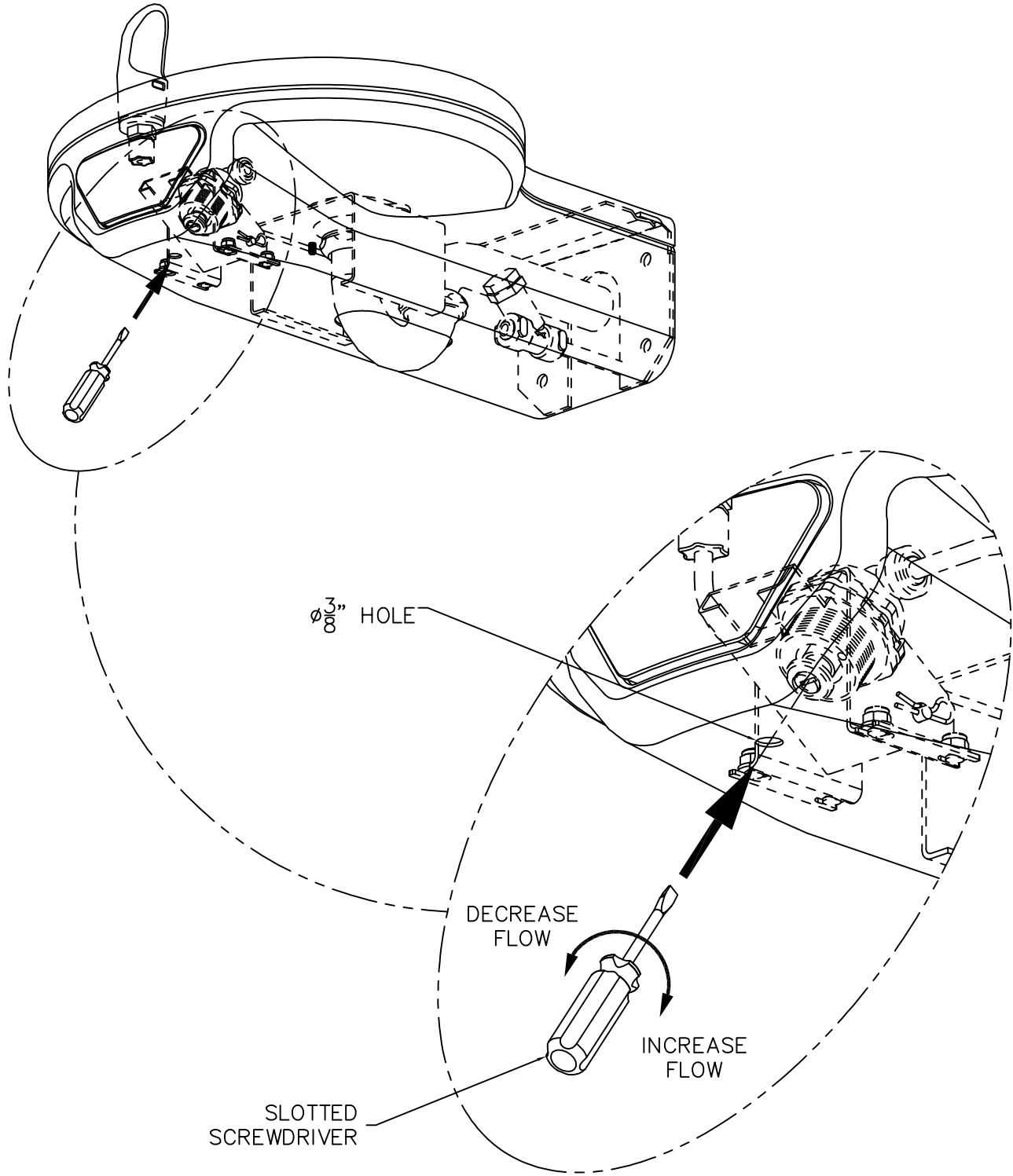


32 3/4" ORIFICE HEIGHT ABOVE FINISHED FLOOR FOR 27" ADA KNEE CLEARANCE. ADJUST AS REQUIRED.

INSTALLATION INSTRUCTIONS:

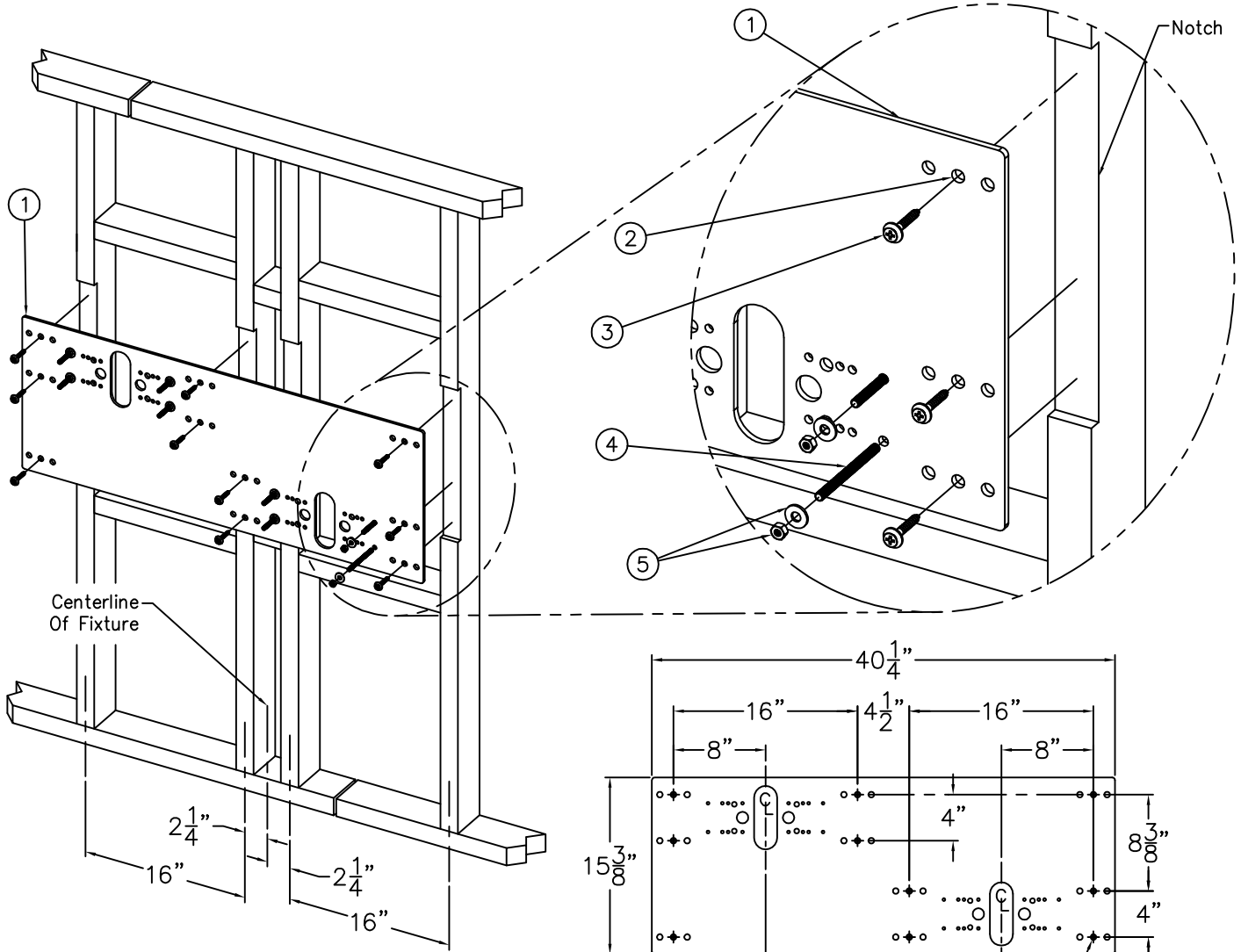
- A- REFER TO DRAWING # 9938-376-002 TO INSTALL STANDARD SUPPLIED WALL MOUNTING PLATE (1).
- B- ROUGH-IN WASTE OUTLETS (2) AT DIMENSIONS SHOWN FOR 1-1/4" OUTER DIAMETER PLAIN END P-TRAPS (3).
- C- ROUGH-IN WATER SUPPLIES (4) AT DIMENSIONS SHOWN FOR THE 1/4" NOMINAL (3/8" O.D.) x 4" LONG COPPER TUBES CONNECTED TO IN-LINE STRAINERS (5) PROVIDED. STRAIGHT STOPS RECOMMENDED ON SUPPLIES SUPPLIED BY OTHERS.
- D- CAREFULLY REMOVE FIXTURES (6) AND COMPONENTS FROM THE PACKAGING PREVENTING SCRATCHING AND DAMAGE.
- E- REMOVE SCREWS (7). REMOVE FOUNTAIN TOPS (8) LIFTING AT THE FRONT & PULLING FORWARD. DISCONNECT TUBING (9) FROM BUBBLERS BY UNSCREWING FERRULE NUTS (10) AND SET TOPS (8) ASIDE WHERE THEY WILL NOT GET DAMAGED.
- F- SLIDE SPACERS, BACK PLATE AND UNITS OVER STUDS FROM MOUNTING PLATE & SECURE WITH NUTS AND WASHERS (11).
- G- ASSEMBLE P-TRAPS (3) TO DRAIN ADAPTERS (12). ASSEMBLE TO UNITS WITH PHILLIPS SCREWS (13). MAKE-UP 1-1/4" O.D. WASTE CONNECTIONS.
- H- FLUSH WATER SUPPLIES (4) BY OTHERS OF ALL DEBRIS PRIOR TO CONNECTING TO FIXTURE.
- I- CONNECT WATER SUPPLIES (4) BY OTHERS TO 1/4" NOMINAL COPPER TUBE INLETS. STRAIGHT SUPPLY STOPS RECOMMENDED.
- J- RE-ATTACH TUBING (9) TO BUBBLERS WITH FERRULE NUTS (10). TEST OPERATION OF BUBBLERS BY DEPRESSING BUTTONS (14). REFERENCE DRAWING # 9938-004-001 TO ADJUST FLOW RATE AS REQUIRED. CHECK ALL CONNECTIONS AND WASTE PIPING FOR LEAKS. CORRECT IF PRESENT.
- K- SET GASKETS (15) ON DRAIN ADAPTERS (12). RE-INSTALL TOPS (8) ON HOUSINGS (ENGAGE THE BACK CLIP ON THE 18" UNIT) AND SECURE WITH SCREWS (7).

<p>ACORN AQUA P.O. Box 3527 City of Industry, CA 91744 Phone: (800) 591-9360 www.acornaqua.com</p>	<p>TITLE CONTOURED WALL MOUNTED BI-LEVEL DRINKING FOUNTAIN</p>		
	<p>MANUFACTURE DATE</p> <p>JANUARY 2006</p> <p>TO PRESENT</p>	<p>DATE ISSUED</p> <p>09/27/05</p> <p>DATE REVISED</p> <p>10/11/06</p>	<p>DRAWING NUMBER</p> <p>9938-002-001</p>



ACORN AQUA
P.O. Box 3527 City of Industry, CA 91744
Phone: (800) 591-9360 www.acornaqua.com

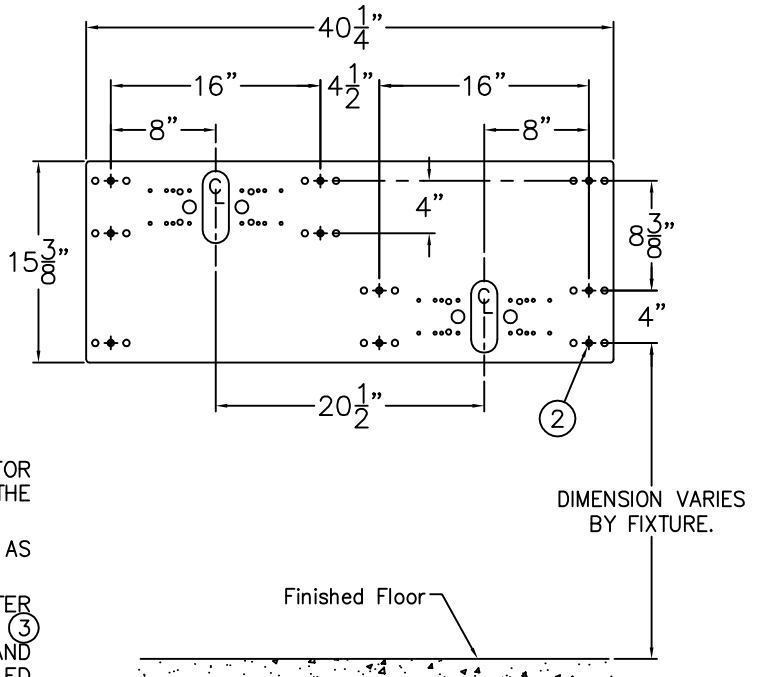
TITLE CONTOURED DRINKING FOUNTAIN FLOW RATE ADJUSTMENT		
MANUFACTURE DATE	DATE ISSUED	DRAWING NUMBER
JANUARY 2006	09/27/05	9938-004-001
TO PRESENT	DATE REVISED	



INSTALLATION INSTRUCTIONS:

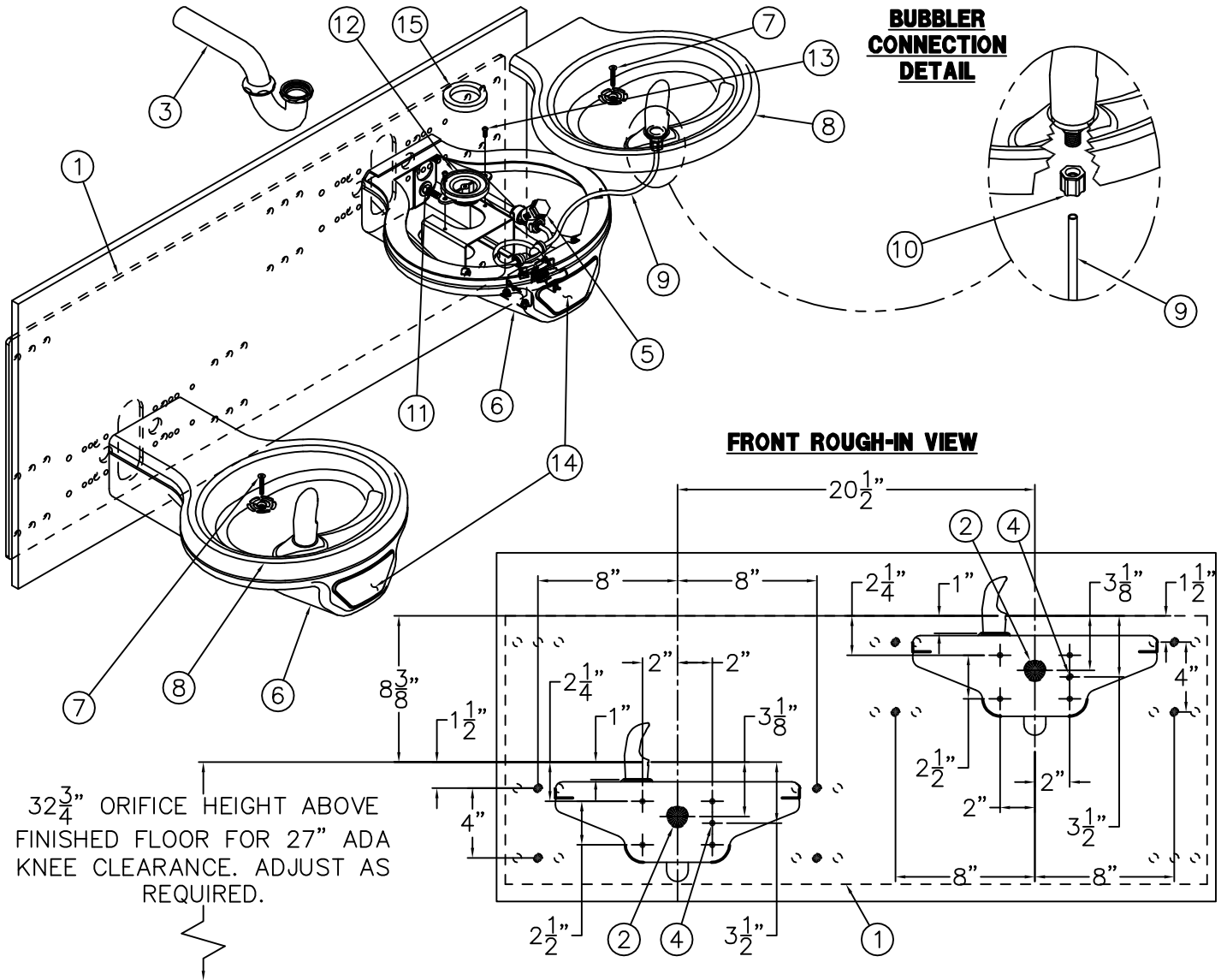
NOTE: THE STANDARD BI-LEVEL INSTALLATION IS SHOWN. FOR THE OPTIONAL -RBL REVERSE BI-LEVEL CONFIGURATION, THE INSTALLATION IS OPPOSITE TO THAT SHOWN.

- A- PROVIDE STRUCTURAL WALL SUPPORT AT THE 16" SPACING AS SHOWN FOR ANCHORING THE -MP2 MOUNTING PLATE ①.
- B- MOUNTING PLATE ① IS 1/4" THICK WITH 1/2" DIAMETER HOLES ② IN 30 PLACES FOR ANCHORING HARDWARE ③ BY OTHERS. NOTCH/PREPARE WALL SO THAT PLATE ① AND INSTALLER PROVIDED HARDWARE ③ WILL BE CONCEALED BEHIND THE WALL FINISHING MATERIAL.
- C- THREAD 5/16" ALL-THREAD STUDS ④ THRU PLATE ① SO THAT MINIMUM 1-1/4" OF STUD WILL PROTRUDE BEYOND THE FINISHED WALL FACE. REFERENCE FIXTURE ROUGH-INS FOR LOCATION.
- D- SECURELY ANCHOR PLATE ① TO WALL WITHIN NOTCHED AREA USING HARDWARE ③ BY OTHERS.



- E- MAKE APPROPRIATE SUPPLY AND WASTE ROUGH-INS THRU THE MOUNTING PLATE ①.
- F- COMPLETE INSTALLATION OF FINISHED WALL LEAVING STUDS ④ PROTRUDING AND ROUGH-INS ACCESSIBLE.
- G- SLIDE FIXTURE OVER STUDS ④ UP AGAINST FINISHED WALL AND SECURE WITH NUTS AND WASHERS ⑤. COMPLETE THE INSTALLATION REFERENCING THE FIXTURE INSTRUCTIONS.

<p>ACORN AQUA P.O. Box 3527 City of Industry, CA 91744 Phone: (800) 591-9360 www.acornaqua.com</p>	<p>TITLE STANDARD -MP2 BI-LEVEL WALL MOUNTING PLATE AND HARDWARE</p>	
	<p>MANUFACTURE DATE OCTOBER 2006 TO PRESENT</p>	<p>DATE ISSUED 10/11/06</p> <p>DATE REVISED</p>

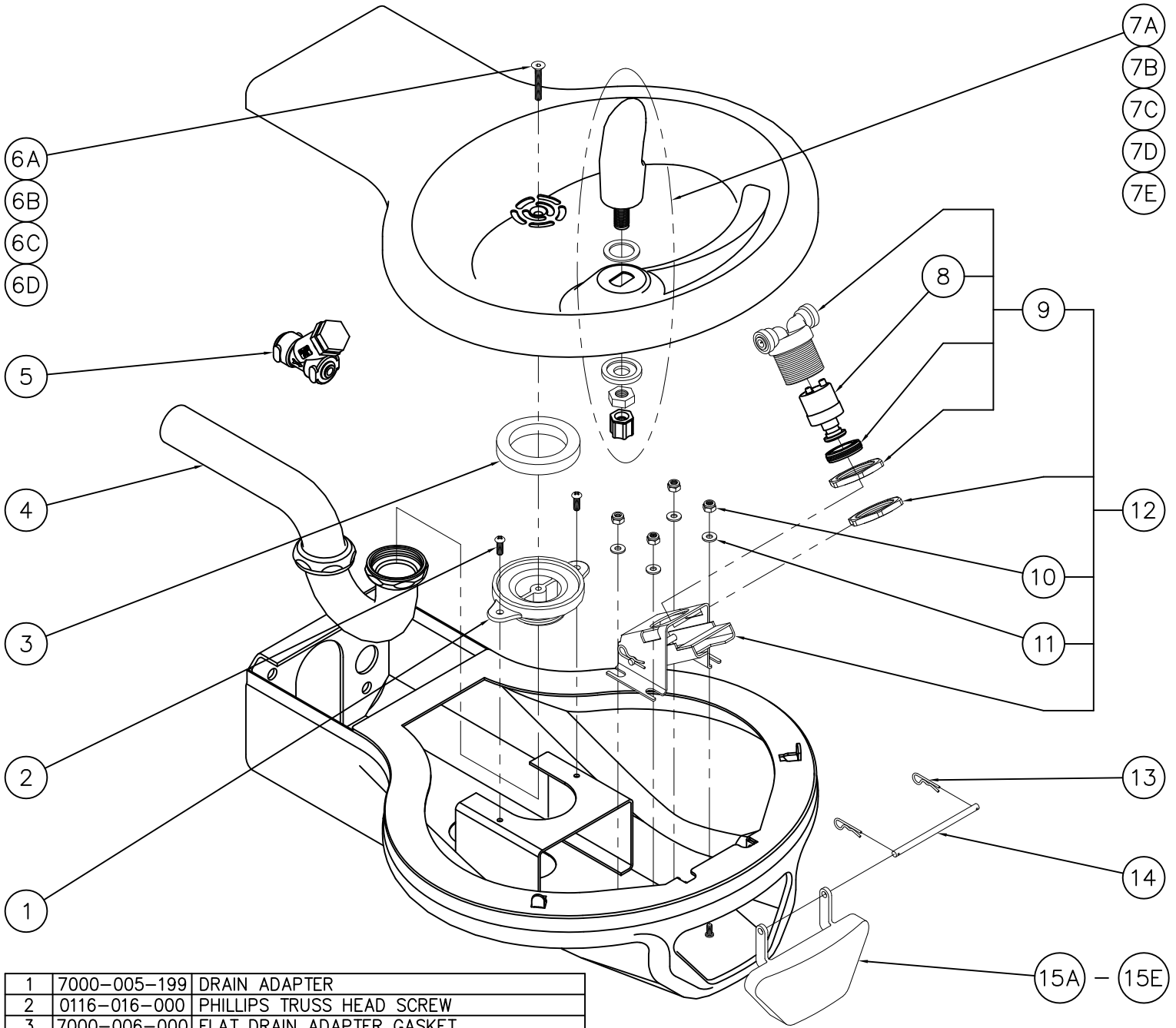


32 3/4" ORIFICE HEIGHT ABOVE FINISHED FLOOR FOR 27" ADA KNEE CLEARANCE. ADJUST AS REQUIRED.

INSTALLATION INSTRUCTIONS:

- A- REFER TO DRAWING # 9938-376-002 TO INSTALL STANDARD SUPPLIED WALL MOUNTING PLATE (1).
- B- ROUGH-IN WASTE OUTLETS (2) AT DIMENSIONS SHOWN FOR 1-1/4" OUTER DIAMETER PLAIN END P-TRAPS (3).
- C- ROUGH-IN WATER SUPPLIES (4) AT DIMENSIONS SHOWN FOR THE 1/4" NOMINAL (3/8" O.D.) x 4" LONG COPPER TUBES CONNECTED TO IN-LINE STRAINERS (5) PROVIDED. STRAIGHT STOPS RECOMMENDED ON SUPPLIES SUPPLIED BY OTHERS.
- D- CAREFULLY REMOVE FIXTURES (6) AND COMPONENTS FROM THE PACKAGING PREVENTING SCRATCHING AND DAMAGE.
- E- REMOVE SCREWS (7). REMOVE FOUNTAIN TOPS (8) LIFTING AT THE FRONT & PULLING FORWARD. DISCONNECT TUBING (9) FROM BUBBLERS BY UNSCREWING FERRULE NUTS (10) AND SET TOPS (8) ASIDE WHERE THEY WILL NOT GET DAMAGED.
- F- SLIDE SPACERS, BACK PLATE AND UNITS OVER STUDS FROM MOUNTING PLATE & SECURE WITH NUTS AND WASHERS (11).
- G- ASSEMBLE P-TRAPS (3) TO DRAIN ADAPTERS (12). ASSEMBLE TO UNITS WITH PHILLIPS SCREWS (13). MAKE-UP 1-1/4" O.D. WASTE CONNECTIONS.
- H- FLUSH WATER SUPPLIES (4) BY OTHERS OF ALL DEBRIS PRIOR TO CONNECTING TO FIXTURE.
- I- CONNECT WATER SUPPLIES (4) BY OTHERS TO 1/4" NOMINAL COPPER TUBE INLETS. STRAIGHT SUPPLY STOPS RECOMMENDED.
- J- RE-ATTACH TUBING (9) TO BUBBLERS WITH FERRULE NUTS (10). TEST OPERATION OF BUBBLERS BY DEPRESSING BUTTONS (14). REFERENCE DRAWING # 9938-004-001 TO ADJUST FLOW RATE AS REQUIRED. CHECK ALL CONNECTIONS AND WASTE PIPING FOR LEAKS. CORRECT IF PRESENT.
- K- SET GASKETS (15) ON DRAIN ADAPTERS (12). RE-INSTALL TOPS (8) ON HOUSINGS (ENGAGE THE BACK CLIP ON THE 18" UNIT) AND SECURE WITH SCREWS (7).

<p>ACORN AQUA P.O. Box 3527 City of Industry, CA 91744 Phone: (800) 591-9360 www.acornaqua.com</p>	<p>TITLE -RBL CONTOURED WALL MOUNTED REVERSE BI-LEVEL DRINKING FOUNTAIN</p>		
	<p>MANUFACTURE DATE</p> <p>JANUARY 2006</p> <p>TO PRESENT</p>	<p>DATE ISSUED</p> <p>09/27/05</p> <p>DATE REVISED</p> <p>10/11/06</p>	<p>DRAWING NUMBER</p> <p>9938-003-001</p>



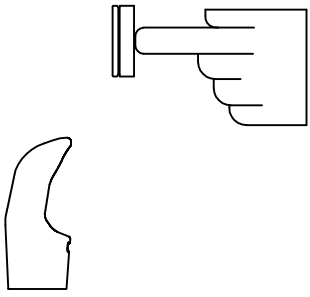

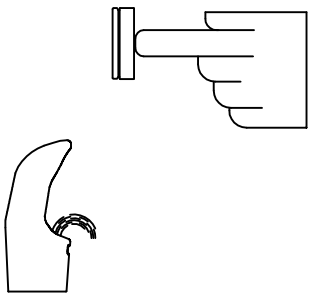
1	7000-005-199	DRAIN ADAPTER	9	7000-050-001	VALVE ASSEMBLY
2	0116-016-000	PHILLIPS TRUSS HEAD SCREW	10	0308-009-000	NYLON INSERT LOCKNUT
3	7000-006-000	FLAT DRAIN ADAPTER GASKET	11	0331-004-000	FLAT WASHER
4	7000-015-000	1-1/4" OUTER DIAMETER P-TRAP	12	7001-008-001	VALVE ACTIVATION ASSEMBLY
5	7000-022-000	"Y" STRAINER	13	0341-100-000	WIRE CLIP
6A	0152-040-000	STAINLESS STEEL ALLEN FLAT HEAD SCREW	14	7000-100-199	BLACK DELRIN SHAFT
6B	0152-040-015	ALLEN FLAT HEAD SCREW - "2" BRONZE	15A	7000-004-000	PUSH PAD
6C	0152-040-016	ALLEN FLAT HEAD SCREW - "3" GOLD	15B	7000-004-015	PUSH PAD - "2" BRONZE
6D	0152-040-018	ALLEN SCREW - "3" -HP HIGH POLISH GOLD	15C	7000-004-016	PUSH PAD - "3" GOLD
7A	7000-002-001	STANDARD CHROME PLATED BRASS BUBBLER	15D	7000-004-017	PUSH PAD - CHROME -HP HIGH POLISH
7B	7000-702-015	BRASS BUBBLER - "2" BRONZE	15E	7000-004-018	PUSH PAD - "3" -HP HIGH POLISH GOLD
7C	7000-702-016	BRASS BUBBLER - "3" GOLD			
7D	7000-702-018	BRASS BUBBLER - "3" -HP HIGH POLISH GOLD			
7E	7000-410-002	"F" OPTION FLEXIBLE BUBBLER ASSEMBLY			
8	7000-060-000	VALVE CARTRIDGE			
ITEM	PART NUMBER	DESCRIPTION	ITEM	PART NUMBER	DESCRIPTION




STANDARD PUSH PAD / PUSH BUTTON DRINKING FOUNTAIN

CONDITION:

SOLUTION:

<p>NO WATER FLOW:</p> 	<ol style="list-style-type: none"> 1.1 Check water main supply – open. 1.2 Inspect stop (by others) – open & no debris. 1.3 Inspect in–line strainer for debris – clean. 1.4 Replace valve cartridge.
<p>WATER DRIPS / WILL NOT SHUT OFF:</p> 	<ol style="list-style-type: none"> 2.1 For push pad activated drinking fountains only: Open fixture and move valve bracket assembly further back from push pad. 2.2 Replace valve cartridge.
<p>REDUCED WATER FLOW:</p> 	<ol style="list-style-type: none"> 3.1 Adjust the valve flow rate. See appropriate fixture installation instructions. 3.2 Check water main supply for 20 psig minimum flow pressure. 3.3 Inspect stop (by others) – open & no debris. 3.4 Inspect in–line strainer for debris – clean. 3.5 Inspect bubbler for debris – clean. 3.6 Inspect all tubing for twists or kinks. 3.7 Replace valve cartridge.

 <p>ACORN AQUA P.O. Box 3527 City of Industry, CA 91744 Phone: (800) 591-9360 www.acornaqua.com</p>	<p>TITLE DRINKING FOUNTAIN VALVE MAINTENANCE INSTRUCTIONS</p>		
<p>MANUFACTURE DATE JANUARY 2006 TO PRESENT</p>	<p>DATE ISSUED 09/28/05</p>	<p>DRAWING NUMBER 9940-200-001</p>	
<p>DATE REVISED</p>			